

Using Our Windows 7 Repair Reinstall Disks.

The first disk you will need is the "Operating System Recovery Disk"

Restart your computer!

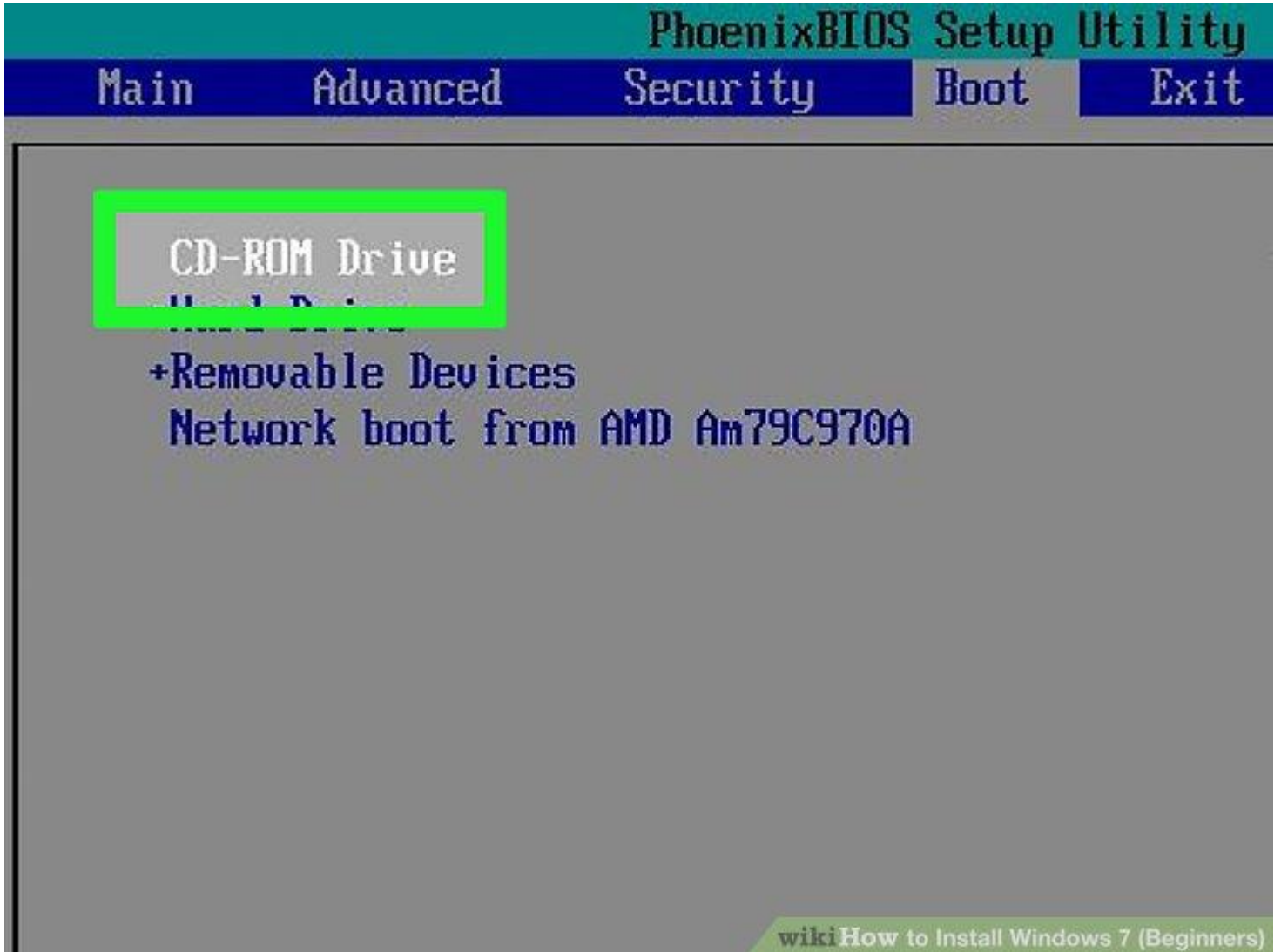
Immediately press Del, Esc, F2, F10, or F9 when it restarts. Depending on the make and model of your computer, pressing one of these buttons immediately after you power on your computer will enter the system BIOS.

Some computers tell you which button to press to enter the BIOS as the computer starts up



Find your BIOS's boot options menu. The boot options menu of your BIOS may vary in location or name from the illustration, but you may eventually find it if you search around.

If you can't find the boot options menu, search the name of your BIOS (most likely located in the BIOS menu) online for help.



Select the optical disk drive as the first boot device of your computer. Although this method may vary among computers, the boot options menu is typically a menu of movable device names where you should set your CD, DVD or Blu-ray drive as the first boot device. It can also be a list of devices that you can set the order of their boot on. Consult a manual or the internet for help if you're stuck.



Place the Windows 7 Installation disc in the disc drive. Press the button on your CD, DVD, or Blu-ray drive. Then place the Windows 7 installation disc in the disk tray and push it back in the drive.

# PhoenixBIOS Setup Utility

Main

Advanced

Security

Boot

Exit

Exit Saving Changes

Exit Discarding Changes

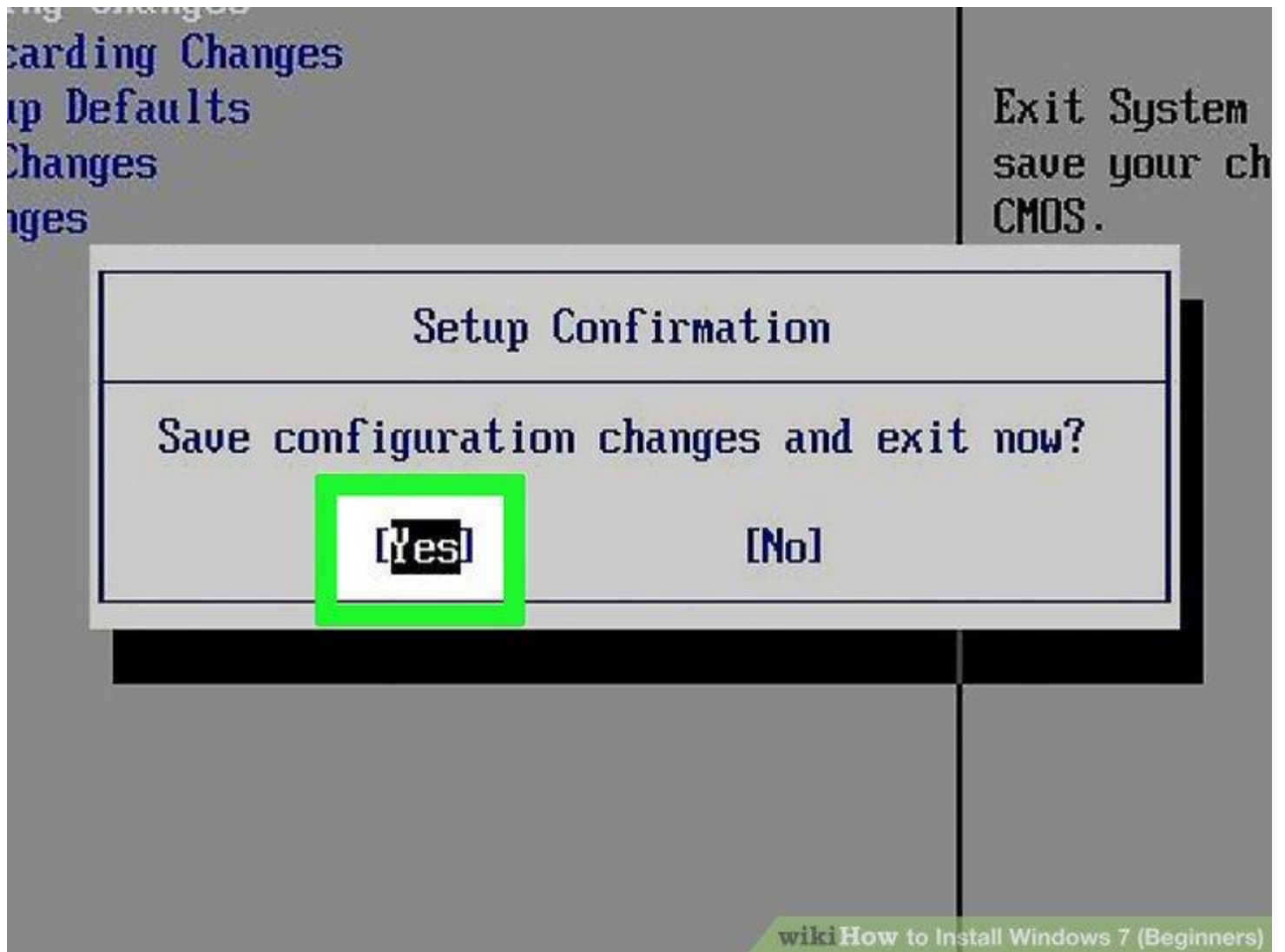
Load Setup Defaults

Discard Changes

Save Changes

wikiHow to Install Windows 7 (Beginners)

Save the changes in the settings. Press the button indicated on the screen or select the save option from the BIOS menu to save your configuration.



Shut off your computer. Either turn off the computer by choosing the shut-down option in your current operating system, or hold the power button until the computer powers off.



**Start your computer from the disc.** After you have placed the disc into the disc drive, start your computer. When the computer starts, press a key if you are asked if you would like to boot from the disc by pressing any key. After you choose to start from the disc, Windows Setup will begin loading.

If you are not asked to boot from the disc, you may have done something wrong. Retry the previous steps and make sure you have selected the correct drive in the BIOS boot menu.

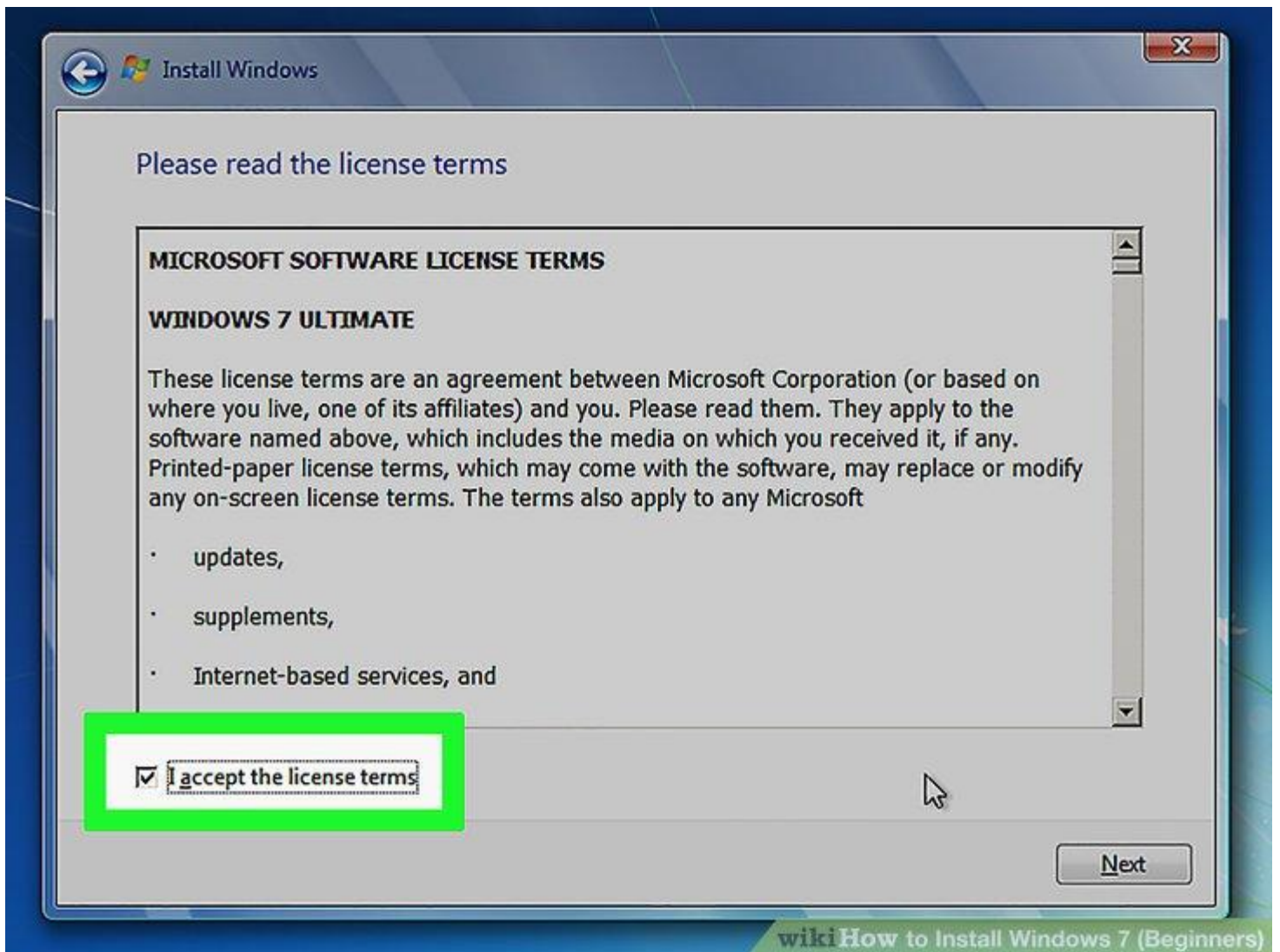


Choose your Windows Setup options. Once Windows Setup loads, you'll be presented with a window. Use the drop-down menus to select your preferred language, keyboard type, and time/currency format, then click **Next** in the lower-right corner.

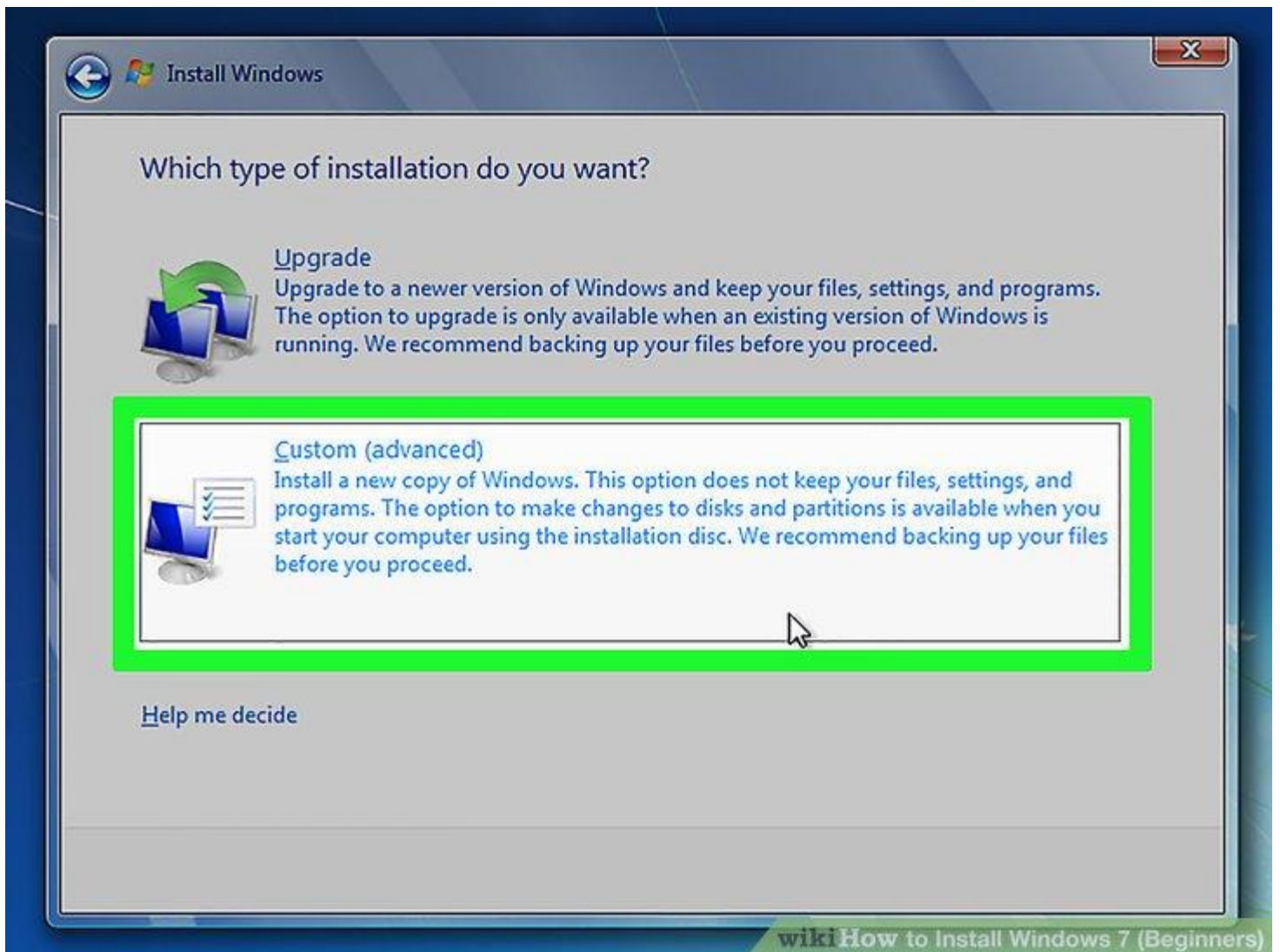


Click the Install Now button. It's the blue button in the center of the screen.



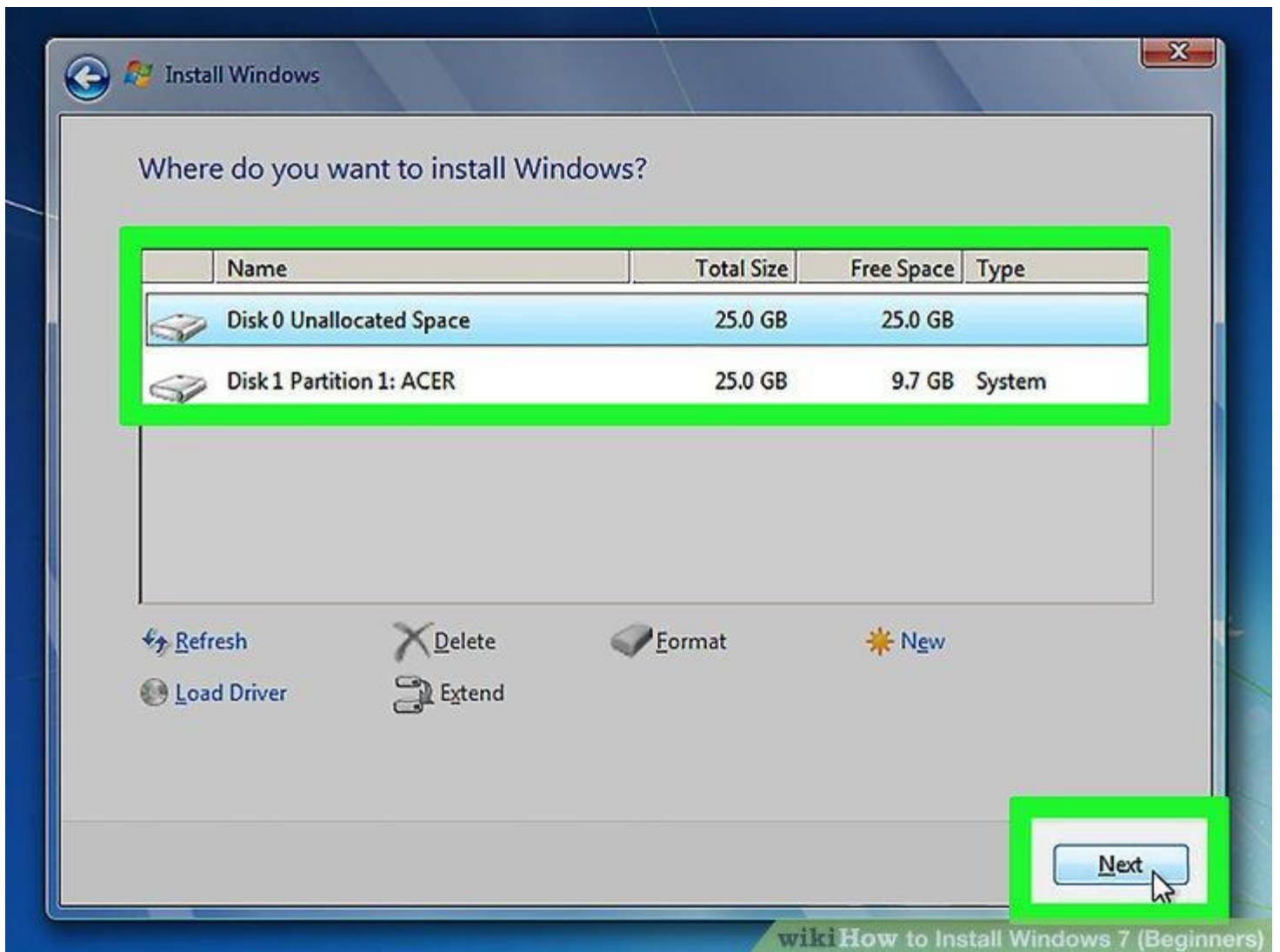


Accept the License Terms. Read over the Microsoft Software License Terms. Then click the checkbox next to *I accept the license terms*, and click **Next** in the lower-right corner.



**Select the Custom installation.** This option allows you to do a clean install of Windows 7. This will erase all your files on the installation drive.

If you do not want to erase all your files, select **Upgrade** instead. This option requires an existing Windows installation. You can only upgrade from one Windows edition to another. For example, if you have Windows Vista Home Edition, you can only upgrade to Windows 7 Home Edition. You would not be able to upgrade to Windows 7 Premium.



Select a hard drive and partition you want to install Windows on. A hard drive is a physical part of your computer that stores data, and partitions "divide" hard drives into separate sections. Click the hard drive or partition you want to install Windows 7 on.

If the hard drive has data on it, you'll need to use the following steps to Delete or Format the drive. Be aware that this will permanently erase all data from the disk.

Select the hard drive from the list of hard drives.

Click *Drive options (advanced)*.

Click **Delete** or **Format** from Drive options.

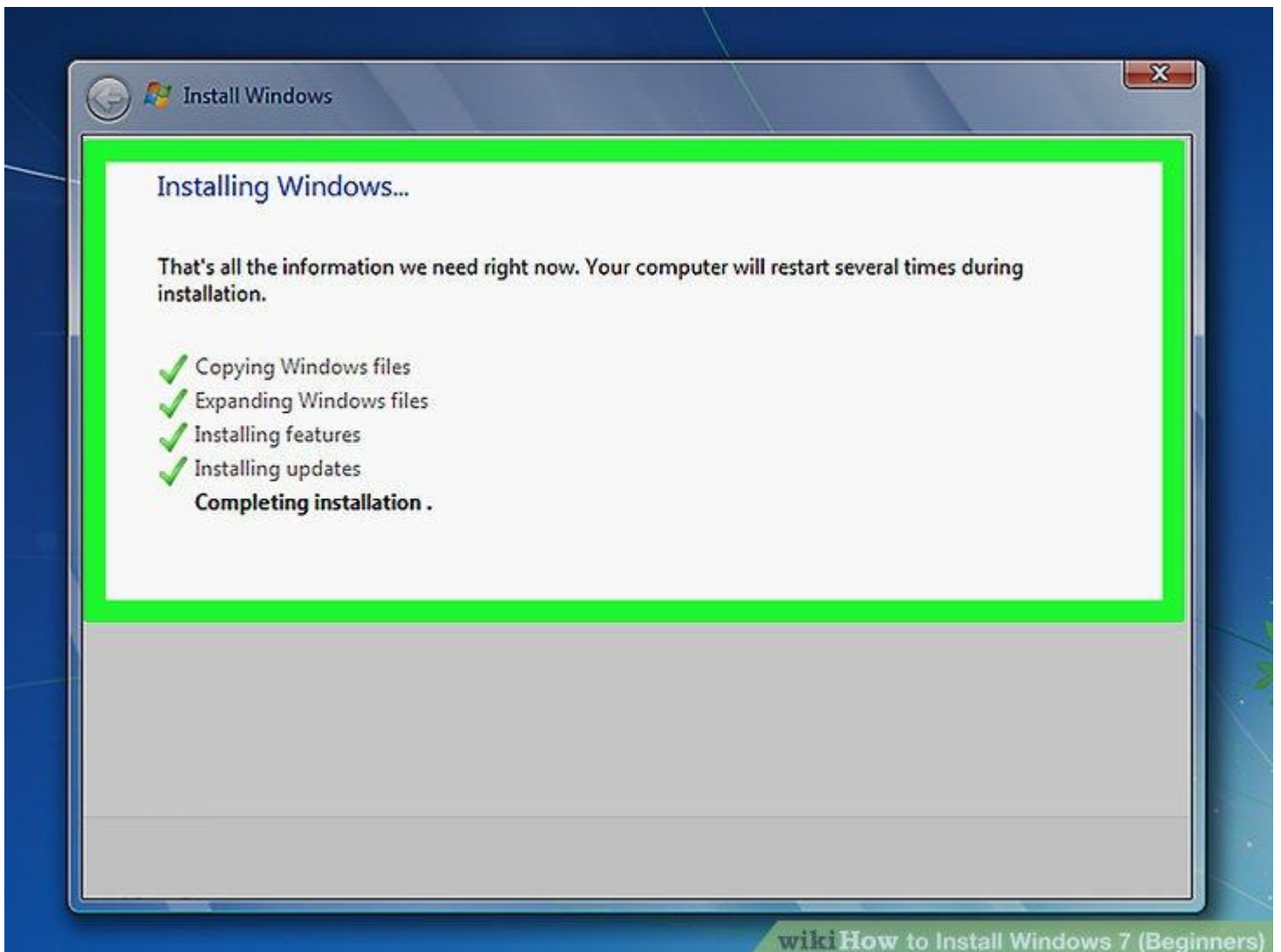
If your computer doesn't have any partitions yet, create one to install Windows on it.

Select the hard drive from the list of hard drives.

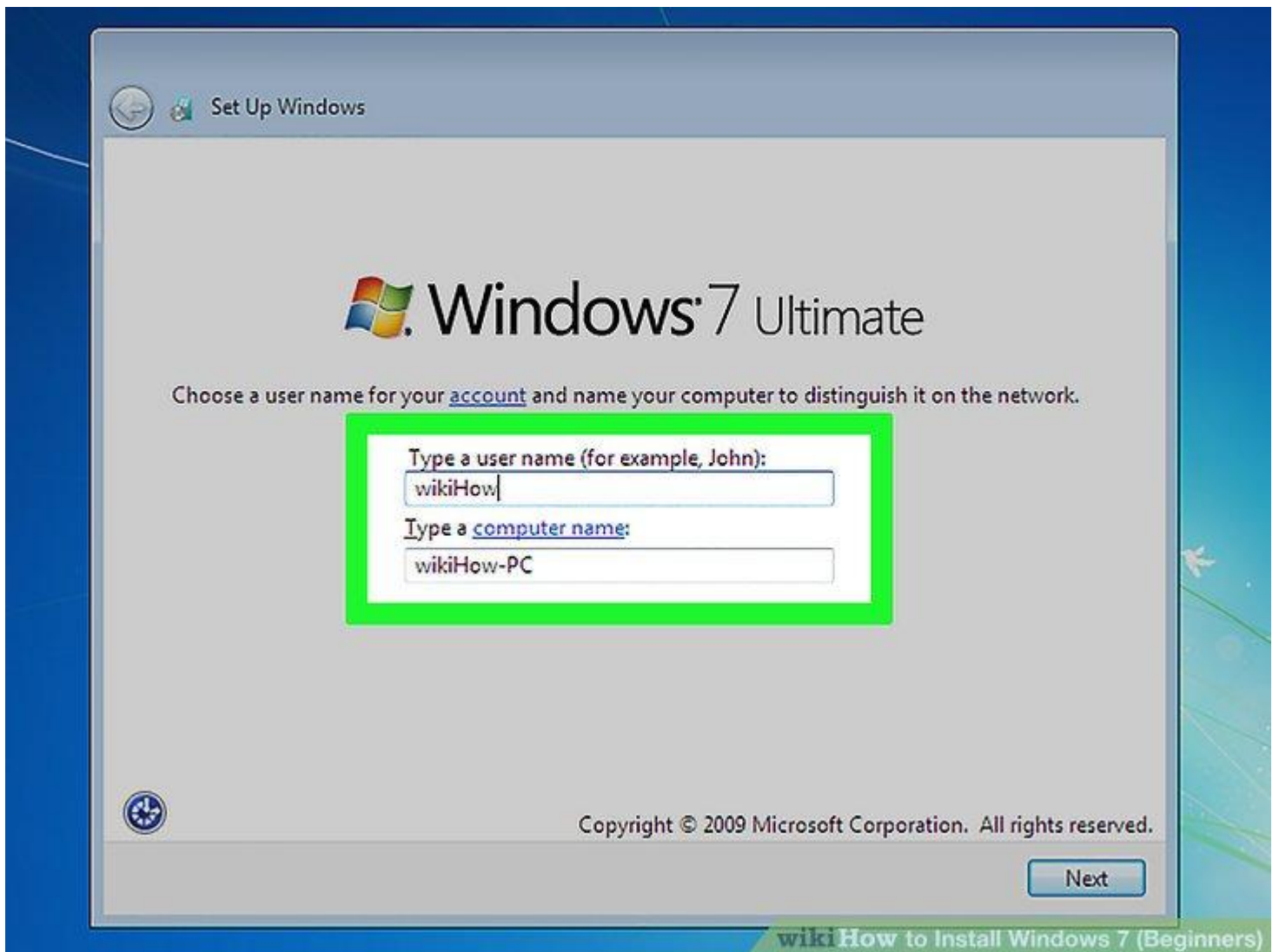
Click **Drive options (advanced)**.

Select **New** from Drive options.

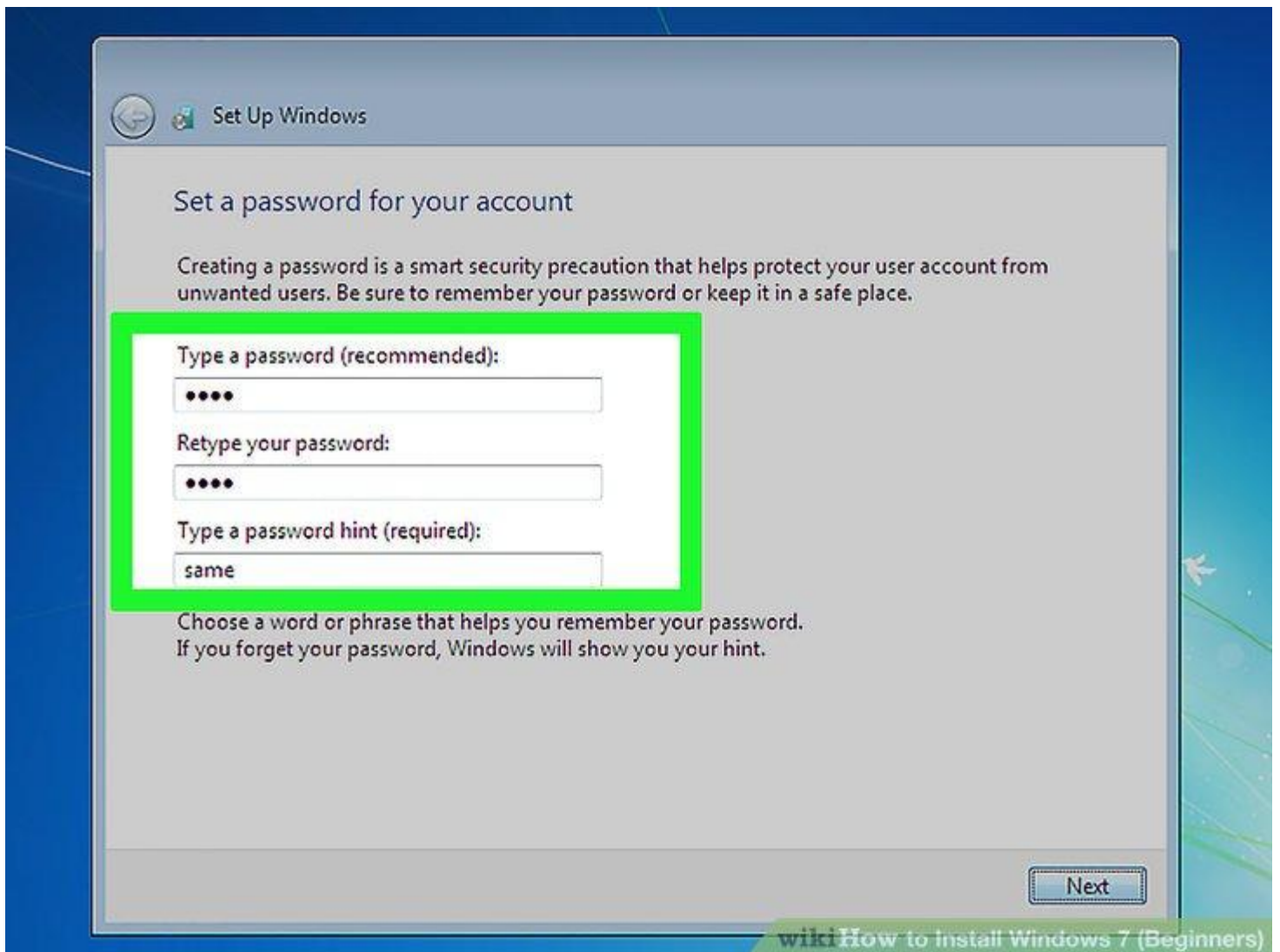
Select the size, and click **OK**.



Install Windows on your preferred hard drive and partition. Once you've decided on where to install Windows, select it and click **Next**. Windows will begin installing. Your computer may start and restart several times during the installation process.



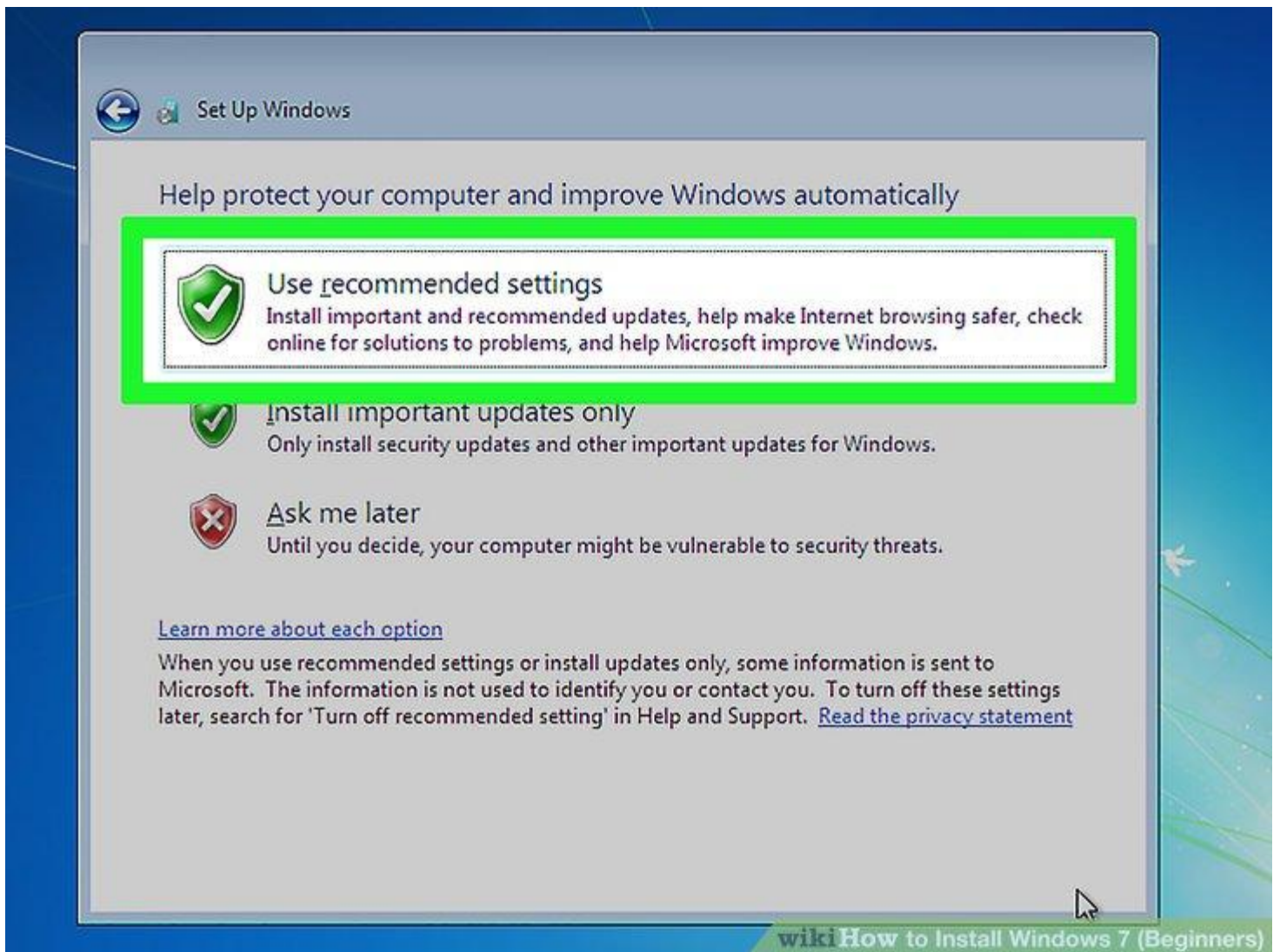
Type your username and computer's name and click Next. The first time you start your computer after installing Windows 7, you will need to go through a setup process.



Type your password and click **Next**. If you don't want a password, leave the text boxes blank and then click **Next**. This is the password you will need to sign in to Windows using your account.



Enter your product key then click **Next**. Your product key is located on the case of your Windows 7 disc if you purchased the disc. To skip entering your product key, just click **Next**, but Windows will run on a 30-day trial, and you'll have to enter a key once the 30 day trial time is up.



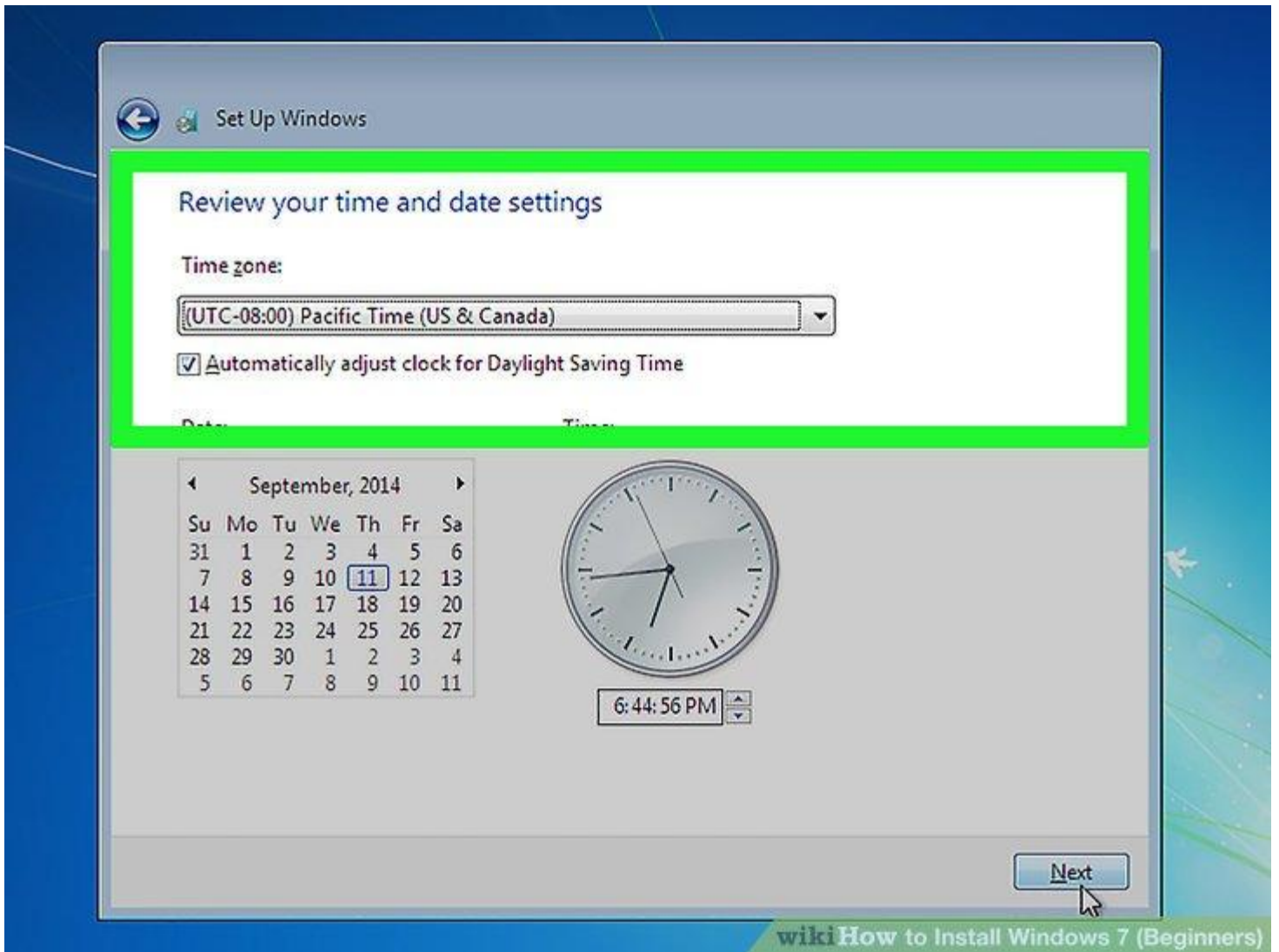
Choose your Windows Update settings. You can select "Use recommended settings", "Install important updates only", or "Ask me later".

**Use recommended settings** automatically sets update and security settings recommended by Microsoft.

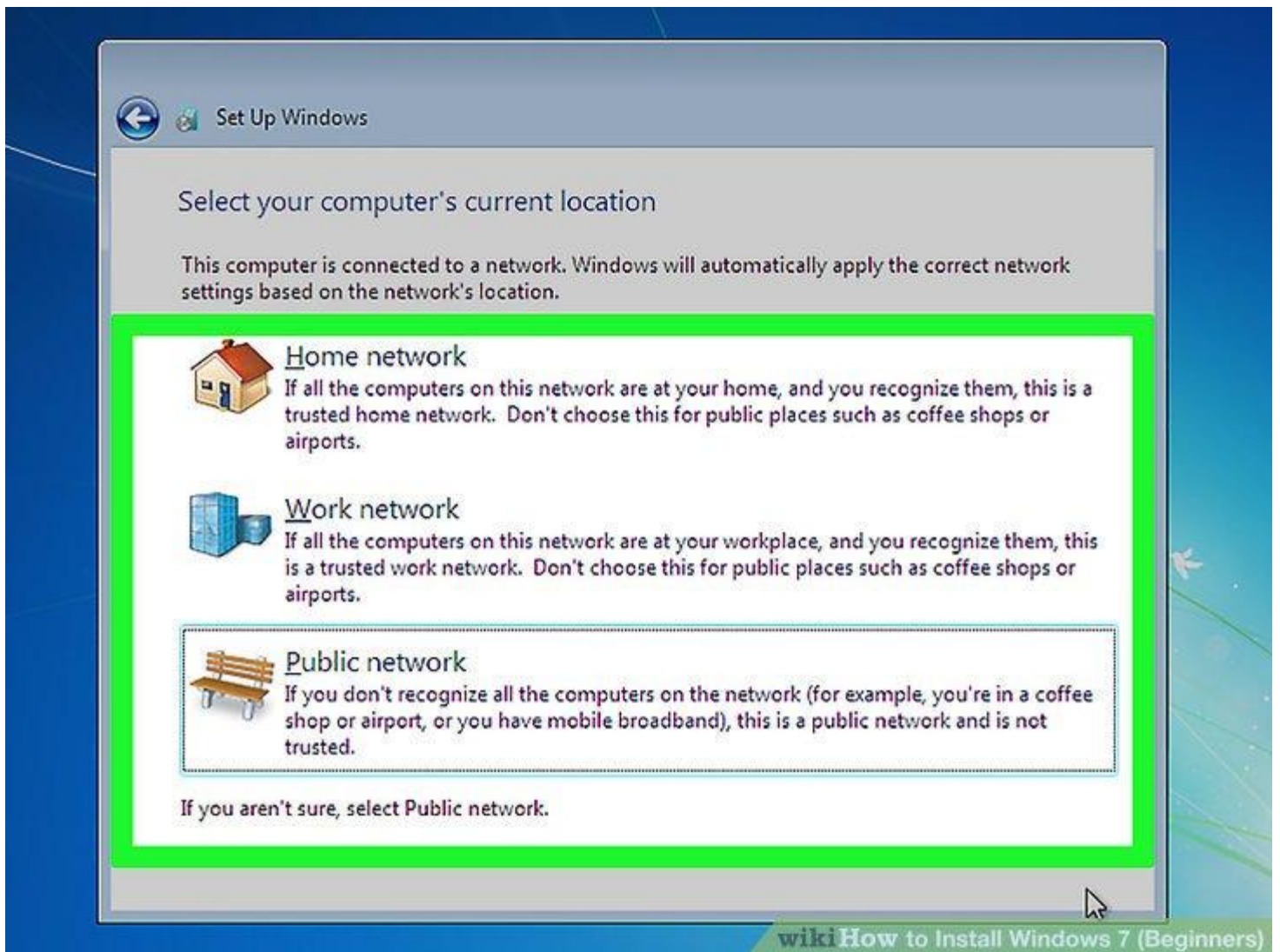
**Install important updates only** configures your computer only to install necessary updates.

**Ask me later** disables your security until you have made a decision.





Set your time and time zone. Use the drop-down menu to select your time zone, and then use the calendar and clock to select today's date and the current time.



**Set your network type.** Once the computer connects to your network, Windows will go through the process of setting up your desktop.

If the computer is connected to your own personal network, choose *Home network*.

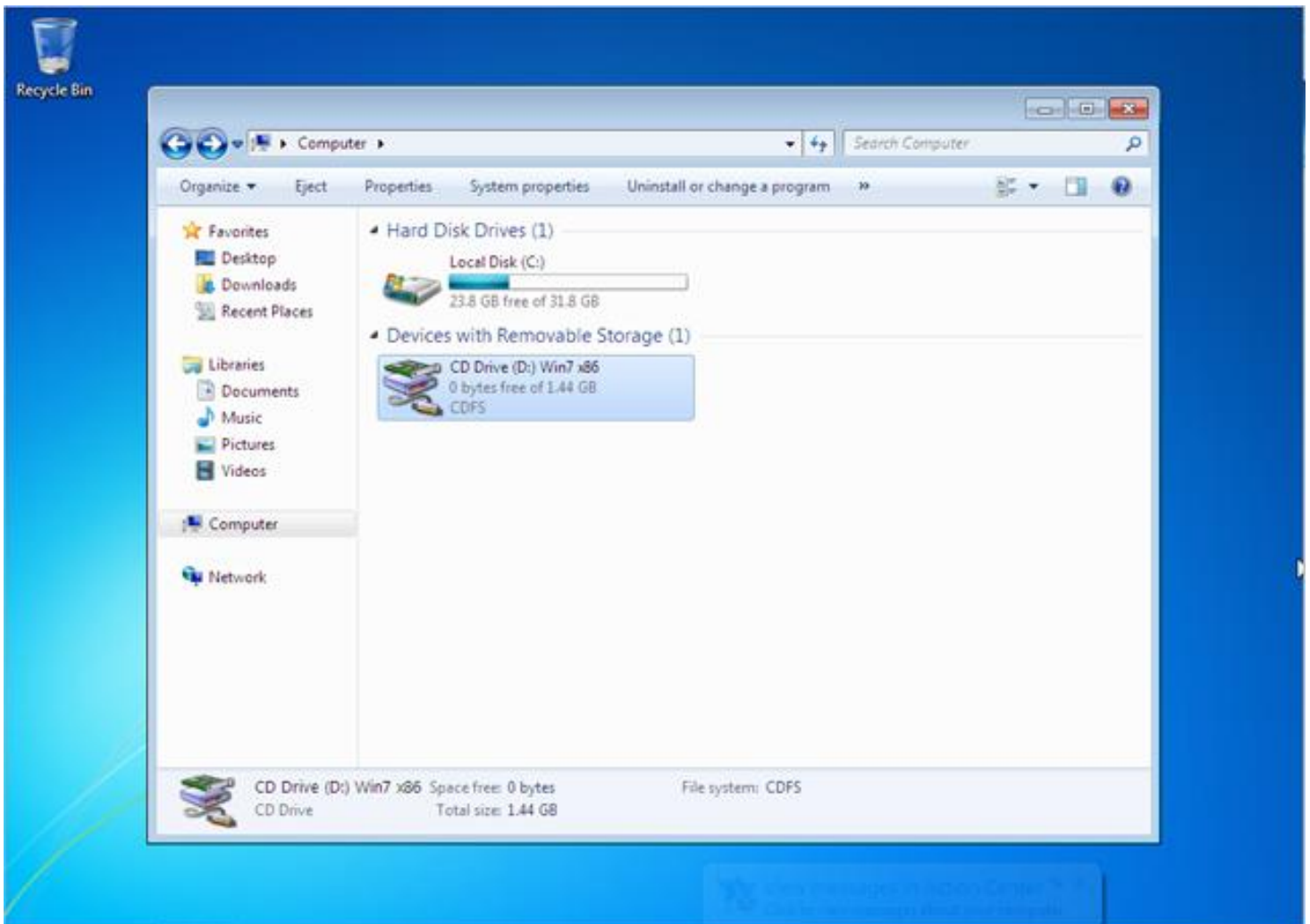
If you are connected to the network at your workplace, choose *Work network*.

If you're connected to a public network from places such as restaurants and shops

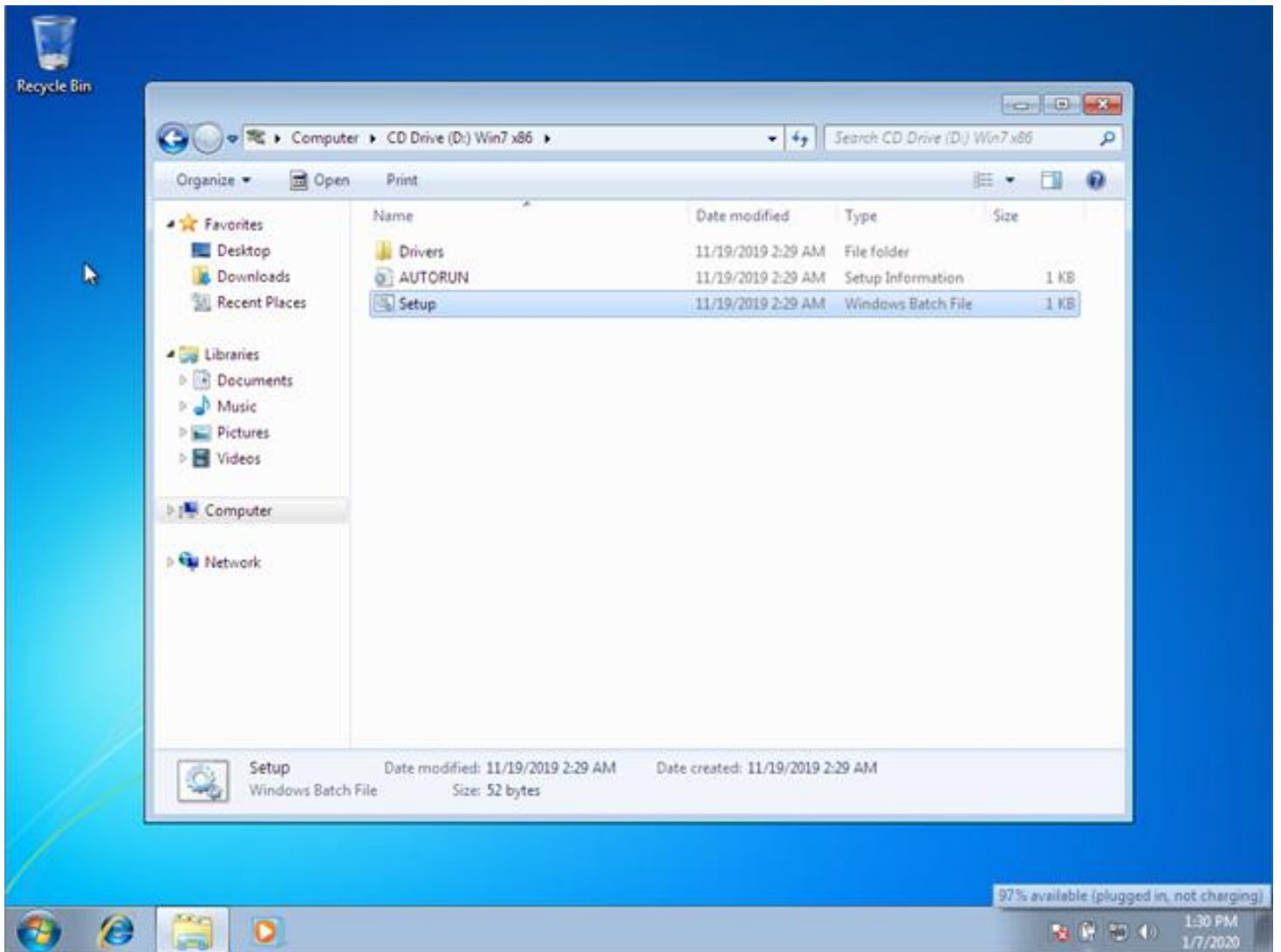
That's it, all looks very complicated but if you have followed the steps it should be easy!

## Using the "Driver Recovery"

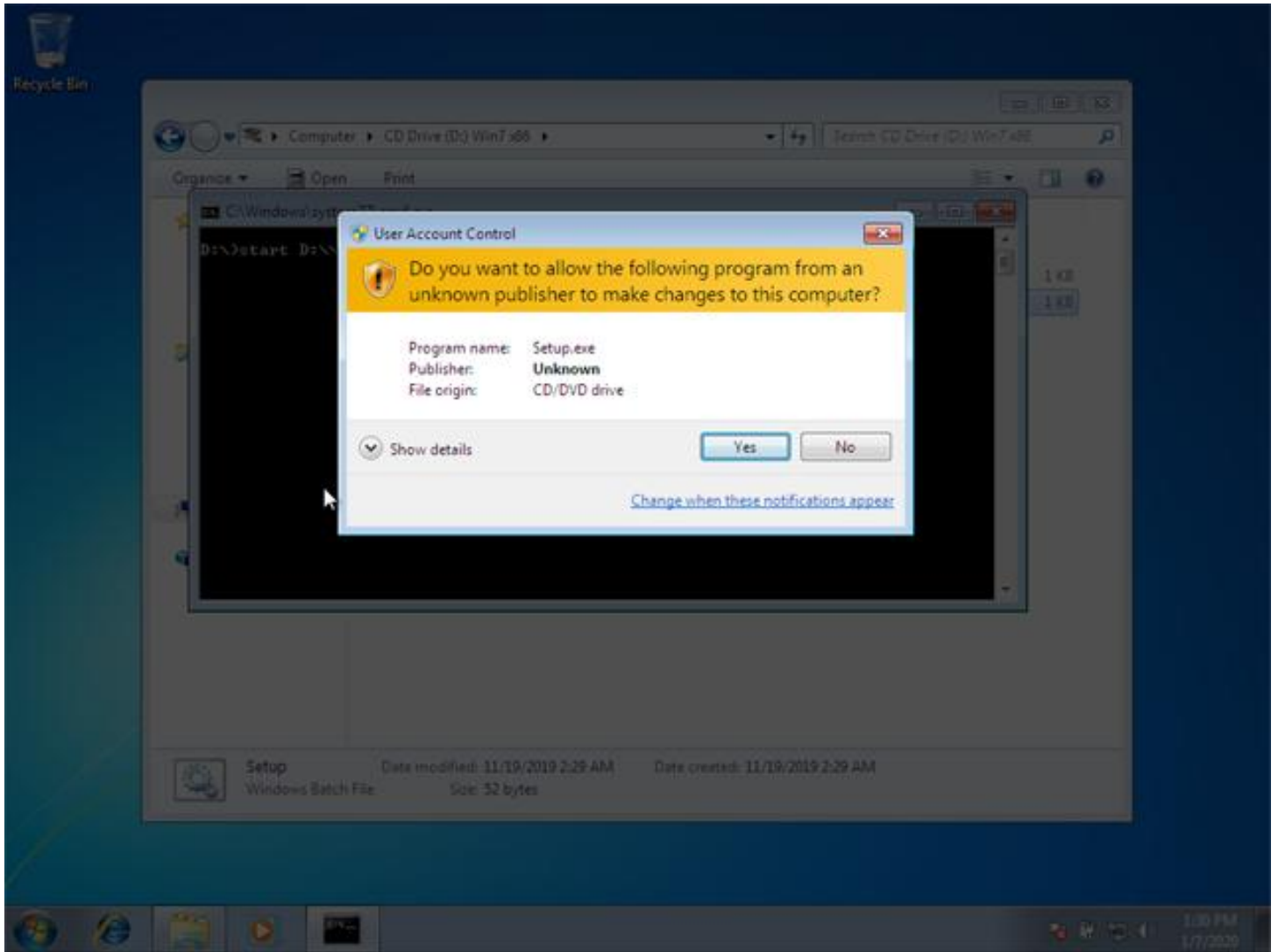
Insert the driver recovery disk into your optical device and navigate to it.



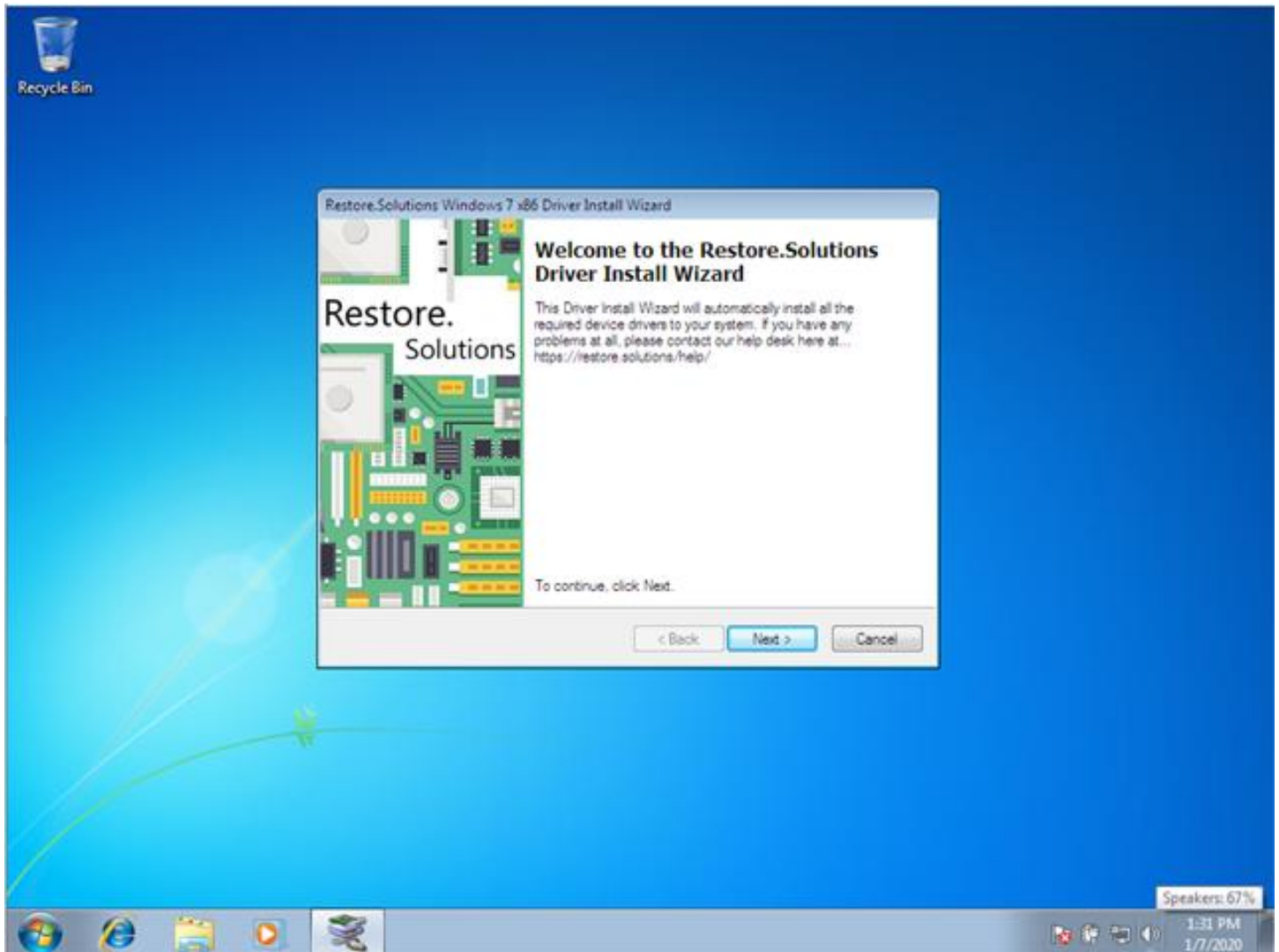
The disk may auto-start but if it does not then just brows to the disk and double click "Setup".



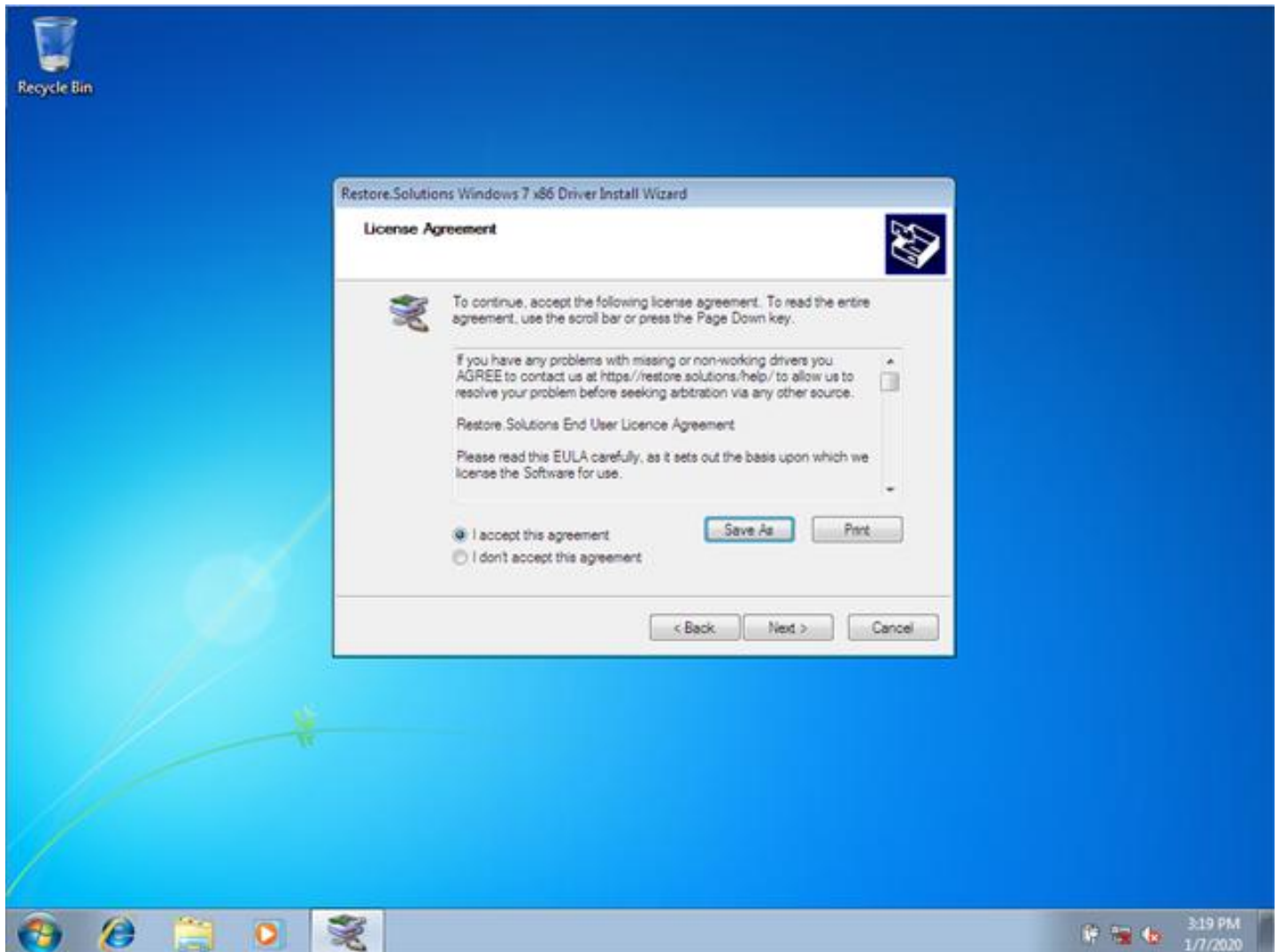
You may see a security alert, if this happens then click "Yes" to allow the disk to install your drivers.



When the disk is ready to start you will see the splash screen as below, just click "Next".

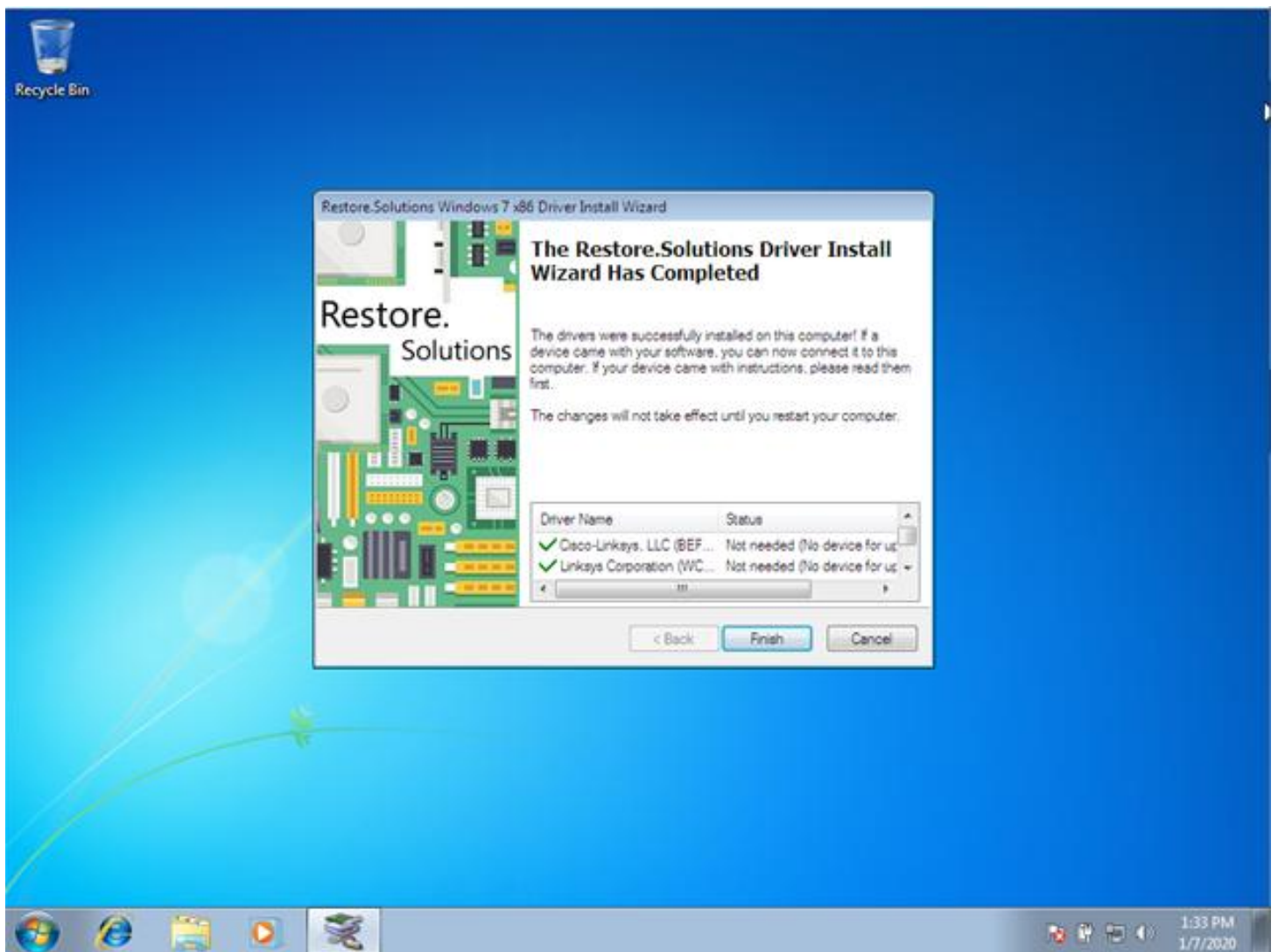


Now you need to accept the license agreement to proceed and then click the "Next" button.



The drivers will now start to install, not all the drivers on the disk will be needed, but the app will check every driver on the disk against your hardware. Be patient as this process can take up-to 15 minutes. During this process you may be asked if you want to install drivers that the app has found, just click "Yes" to install them.

As soon as all the drivers have been installed you will see a screen very much like the one below.



You are all done! As easy as pie

If you have any concerns or issues at all please contact us!