

Windows 8 / 8.1 Recovery with Drivers Instructions

If you are using a USB flash drive then you will have a unified USB with 2 partitions on it. One is your operating system recovery partition and the other the Restore.Solutions driver recovery and install software.

If you are using recovery DVDs then you will have 2 x DVDs one labelled "Operating System Recovery" and the other labelled "Driver Recovery".

To make your computer start from the USB or DVD you will need to make sure your computer is set to boot from your chosen recovery media.

Most computers will display a message, on start-up or reset, that states : "Press [key] to enter setup" or something similar.

Restart or reset your system and look for this message, as this is the key that is used to access your BIOS settings.

If you are not sure what key to press to enter your BIOS, below is a list of common BIOS entry keys by manufacturer.

Depending on the age of your system, the BIOS entry key may be slightly different but try any of the ones below.

ASRock: F2 or DEL

ASUS: F2 for all PCs, F2 or DEL for Motherboards

Acer: F2 or DEL

Dell: F2 or F12

ECS: DEL

Gigabyte / Aorus: F2 or DEL

HP: F10

Lenovo (Consumer Laptops): F2 or Fn + F2

Lenovo (Desktops): F1

Lenovo (ThinkPads): Enter then F1.

MSI: DEL for motherboards and PCs

Microsoft Surface Tablets: Press and hold volume up button.

Origin PC: F2

Samsung: F2

Toshiba: F2

Zotac: DEL

All BIOS pages look different, as do boot menus, the example below is an older BIOS version, used to keep the instructions as simple as possible.

If you are in doubt please search for YOUR COMPUTER MAKE AND MODEL + "How to boot from DVD or USB" . This search should glean many results for your specific computer.

PhoenixBIOS Setup Utility				
Main	Advanced	Security	Boot	Exit
System Time: [19:17:19]				Item Specific Help
System Date: [10/28/2014]				
Legacy Diskette A: [1.44/1.25 MB 3½"]				<Tab>, <Shift-Tab>, or <Enter> selects field.
Legacy Diskette B: [Disabled]				
▶ Primary Master [None]				
▶ Primary Slave [None]				
▶ Secondary Master [CD-ROM]				
▶ Secondary Slave [None]				
▶ Keyboard Features				
System Memory: 640 KB				
Extended Memory: 2096128 KB				
Boot-time Diagnostic Screen: [Enabled]				
F1 Help	↑↓ Select Item	-/+ Change Values	F9 Setup Defaults	
Esc Exit	←→ Select Menu	Enter Select ▶ Sub-Menu	F10 Save and Exit	

Almost all computers, manufactured over the last 5 years have the "Secure Boot" system built in. When "Secure Boot" is enabled, you can NOT boot up from any media apart from your hard disk / SSD.

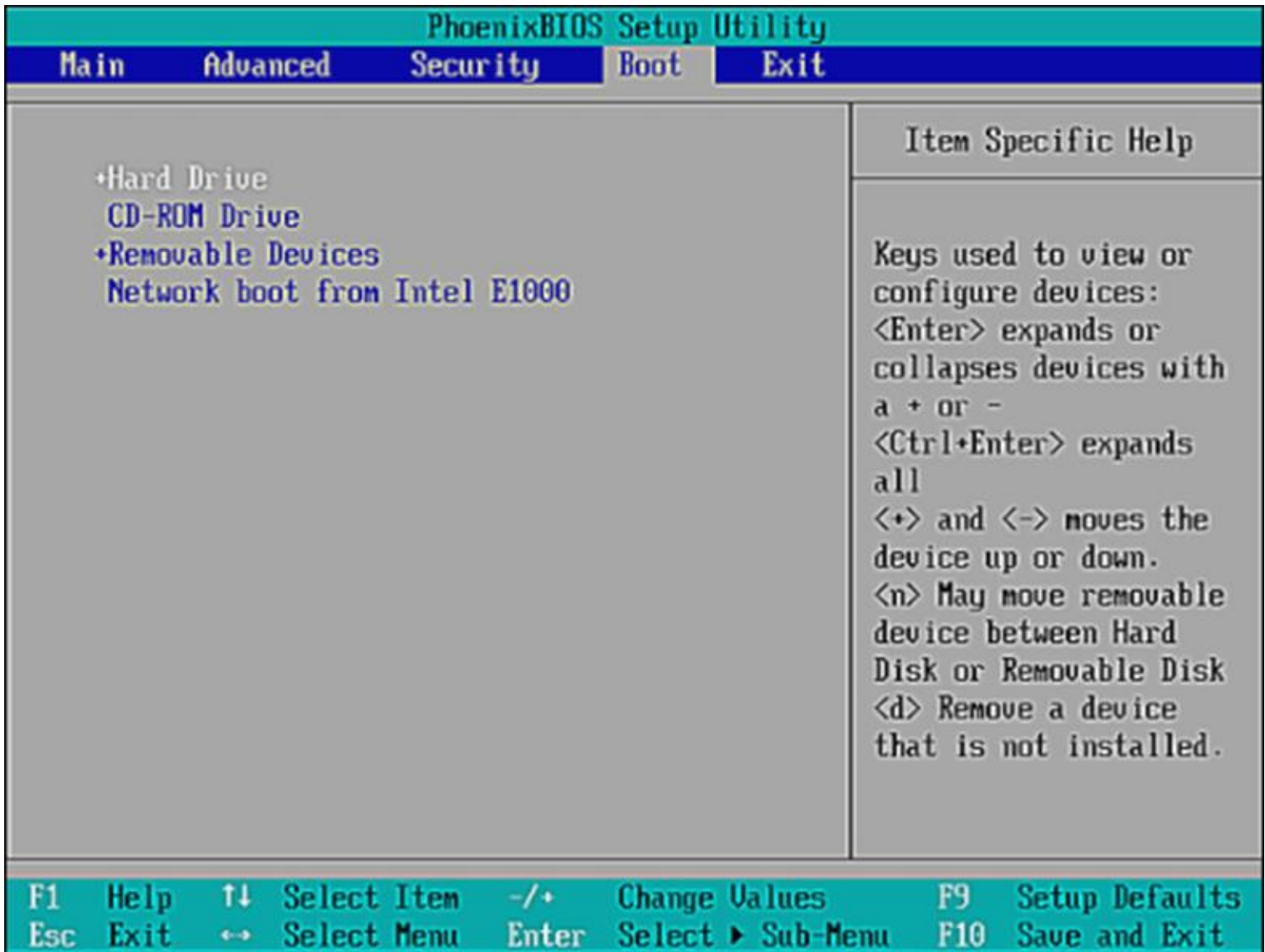
In most cases you will HAVE to turn "Secure Boot" to OFF
Make sure "Legacy Mode" or "Legacy Boot" is set to ON
Set "CMS" to ON or ENABLED

The location of the "Secure Boot" setting, in your BIOS, is normally under Security. However, this is manufacture and model specific as are the other settings, such as "CMS" and "Legacy". Some of these may be listed under your "Boot Options" tab in your BIOS.

Not all systems have "Secure Boot" or the other options, so do not be alarmed if it is not present. However, in all cases you HAVE to boot or start your computer from the recovery media, and not from your internal hard disk drive.

PhoenixBIOS Setup Utility							
Main	Advanced	Security	Boot	Exit			
CD-ROM Drive +Removable Devices +Hard Drive Network boot from Intel E1000e				Item Specific Help			
				Keys used to view or configure devices: <Enter> expands or collapses devices with a + or - <Ctrl+Enter> expands all <+> and <-> moves the device up or down. <n> May move removable device between Hard Disk or Removable Disk <d> Remove a device that is not installed.			
F1	Help	↑↓	Select Item	-/+	Change Values	F9	Setup Defaults
Esc	Exit	↔	Select Menu	Enter	Select ► Sub-Menu	F10	Save and Exit

Next you will need to Navigate to the Boot or Boot Options tab. You will likely need to use the arrow keys to select it.



Select a device to boot from. You have a few options. Again, this is manufacturer and BIOS dependent, every computers BIOS will look slightly different.

For a USB flash drive, select the Removable Devices option.

For a disc / DVD installation, select the CD-ROM Drive option.

Once you have selected the correct boot device you will need to save your settings and exit. You should see a tab or press a key to do this such as [F10] at the bottom of the screen or something that says "Save and Exit". As soon as you

select it the system will save your BIOS settings and restart your computer. You may have to press [Enter] to confirm the changes.



If you have setup your BIOS correctly, as soon as your computer restarts, you will see a prompt saying "Press any key to boot from CD or DVD" it may specify an alternative device such as a USB flash drive.

At this point you **MUST** press any key to boot from your DVD or USB recovery media.



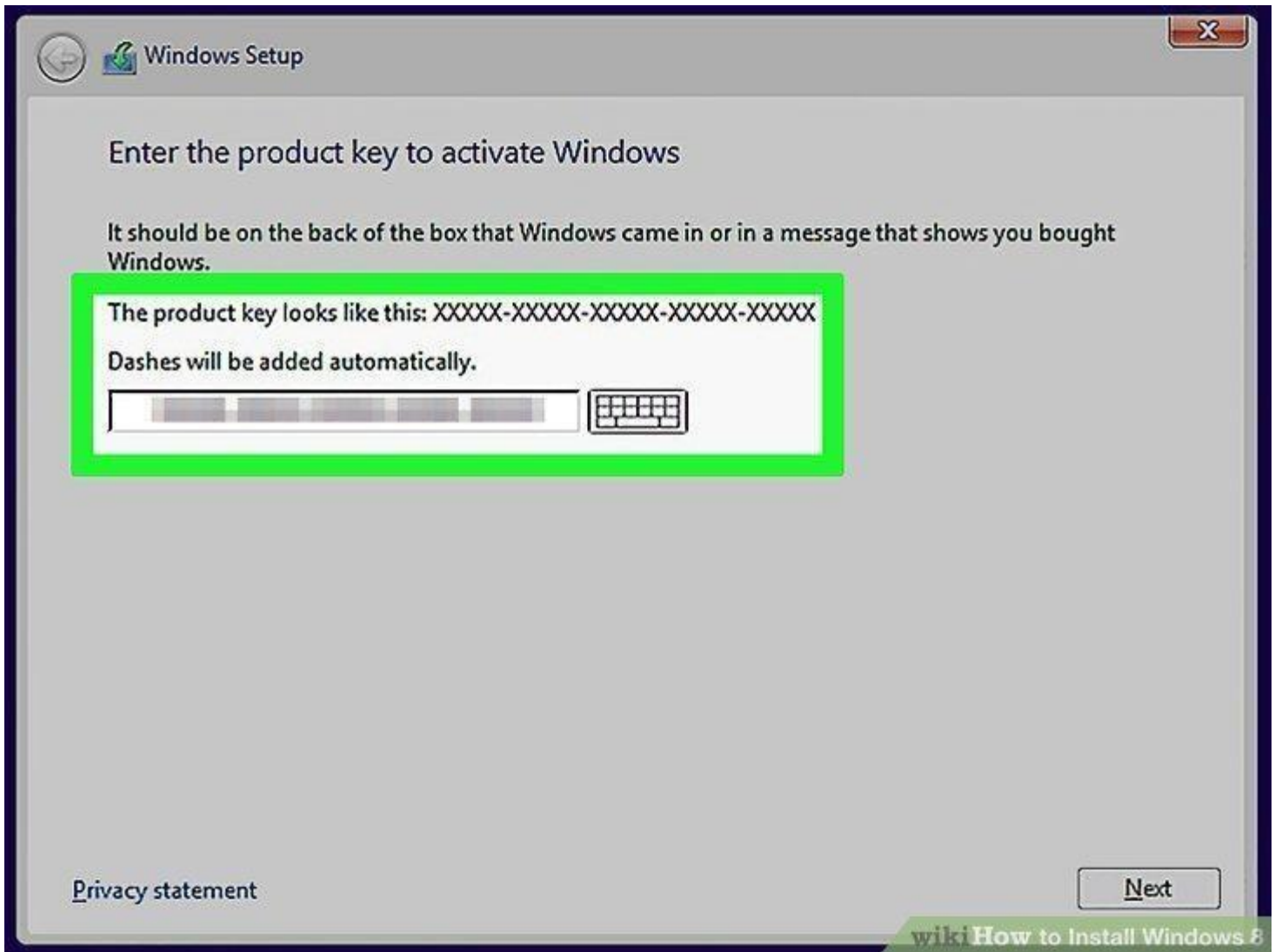
Select a language, time, and keyboard setting. In most cases, the information on this window should already be correct; if you see incorrect information (e.g., the wrong time/region), click the item's drop-down box and select the correct information in the drop-down menu.



Click [Next]. It's in the bottom-right corner of the window.

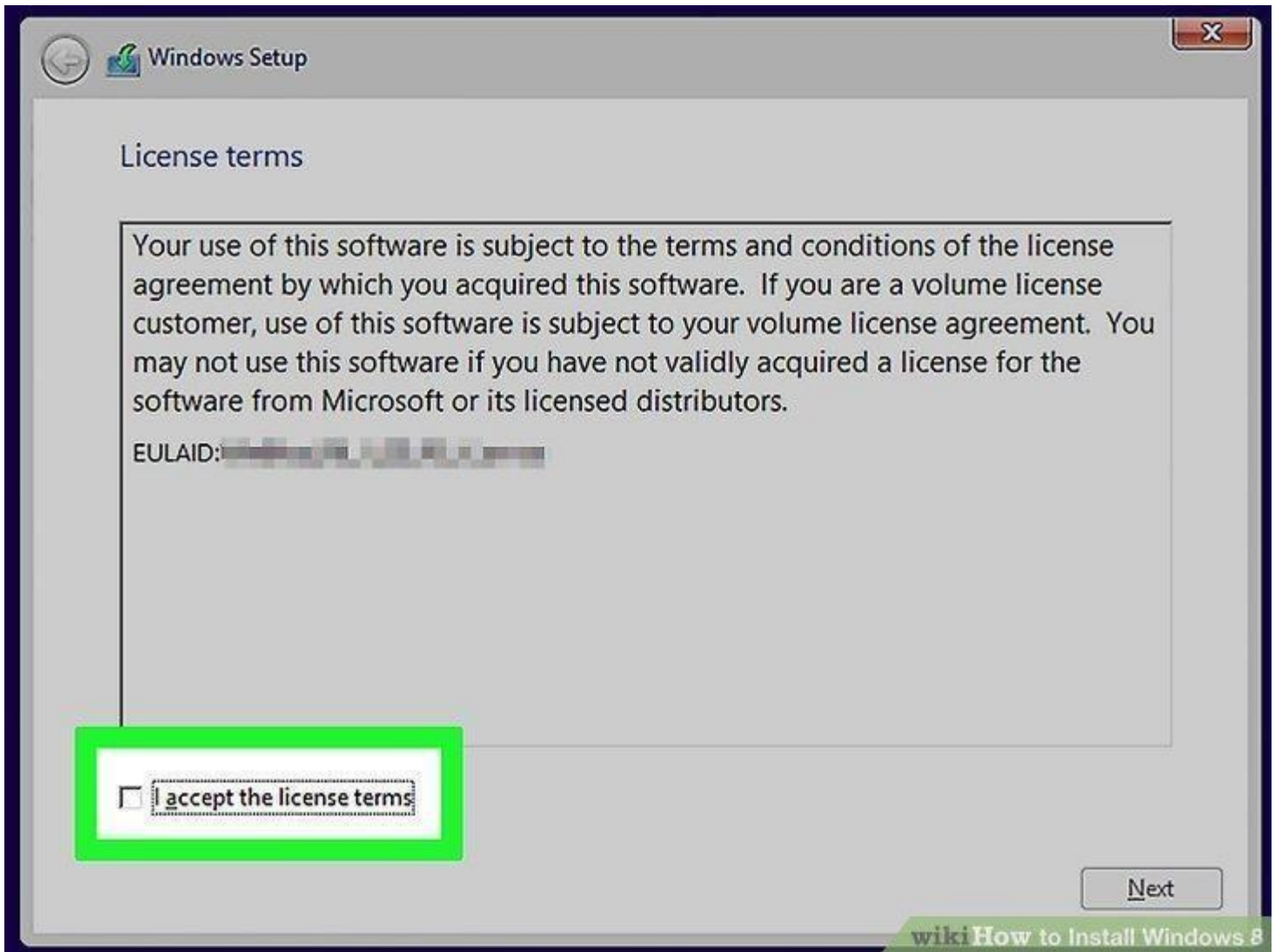


Click [Install Now]. This option is in the middle of the window.

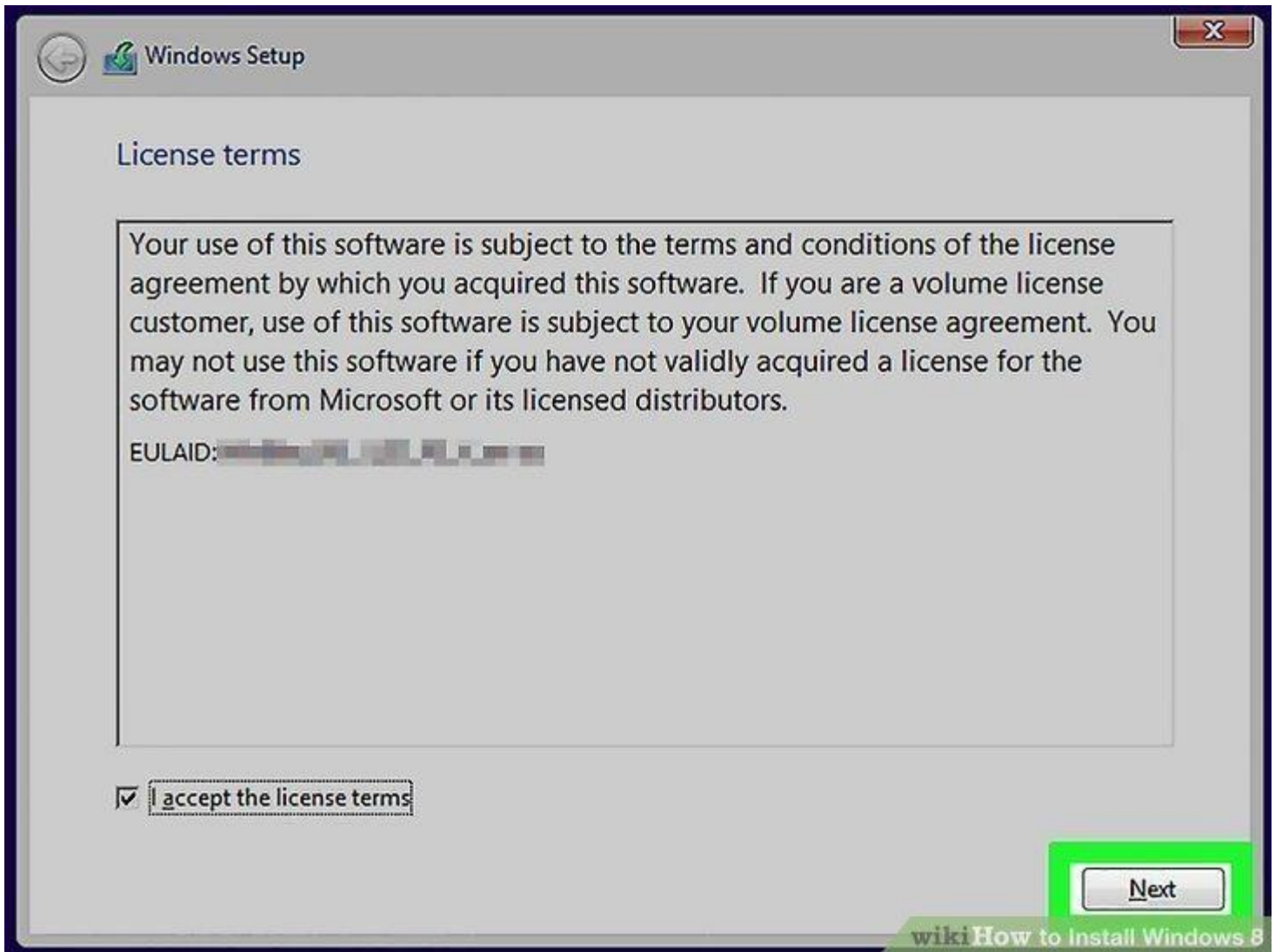


Enter your Windows 8 product key. Type in the 25-character code that's listed on the Windows 8 CD case, box, or manual, then click Next to proceed.

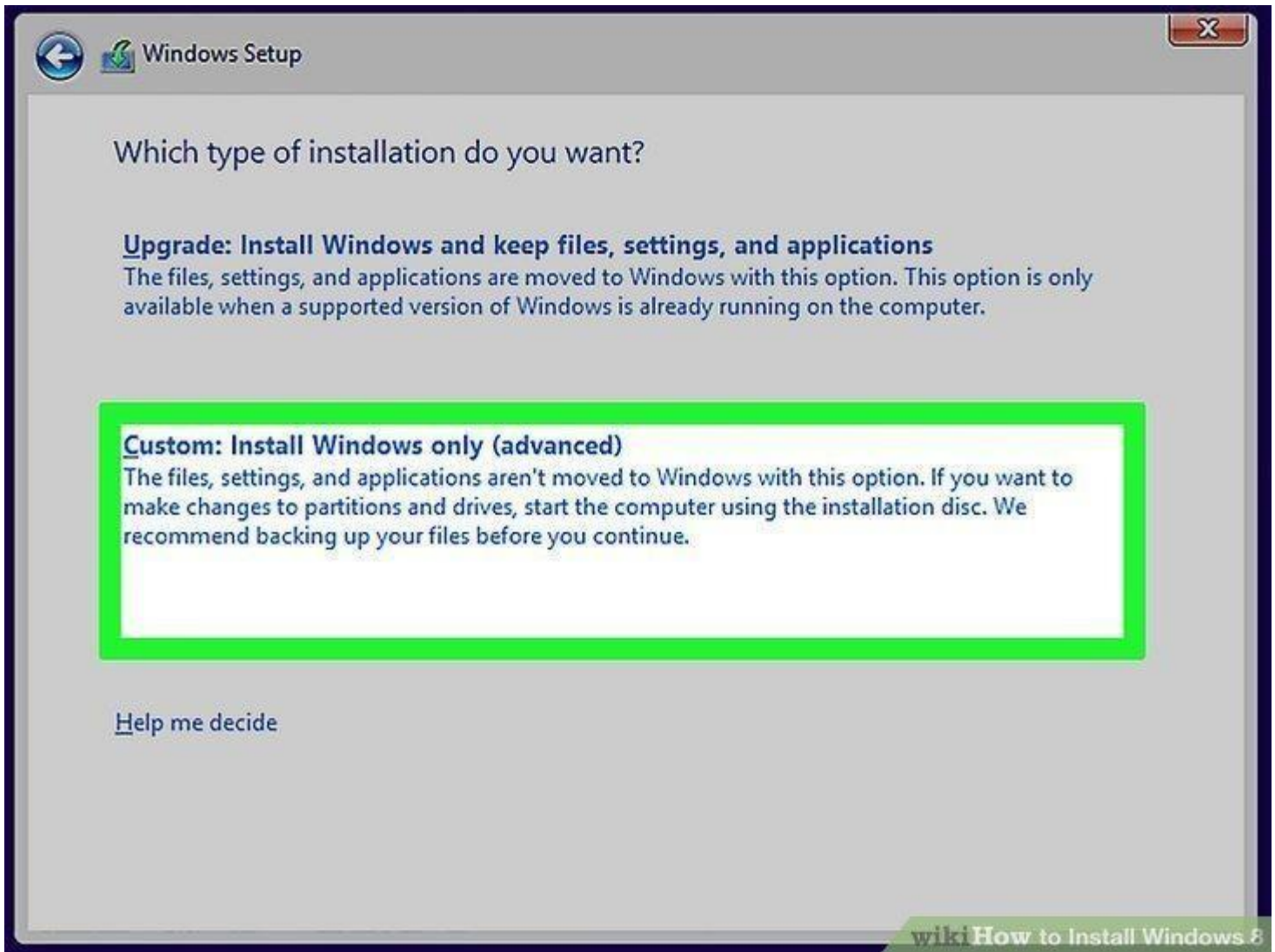
If you bought your Windows 8 CD back when Windows 8 came out, you may have a copy of the code in an email in your Microsoft-registered email account.



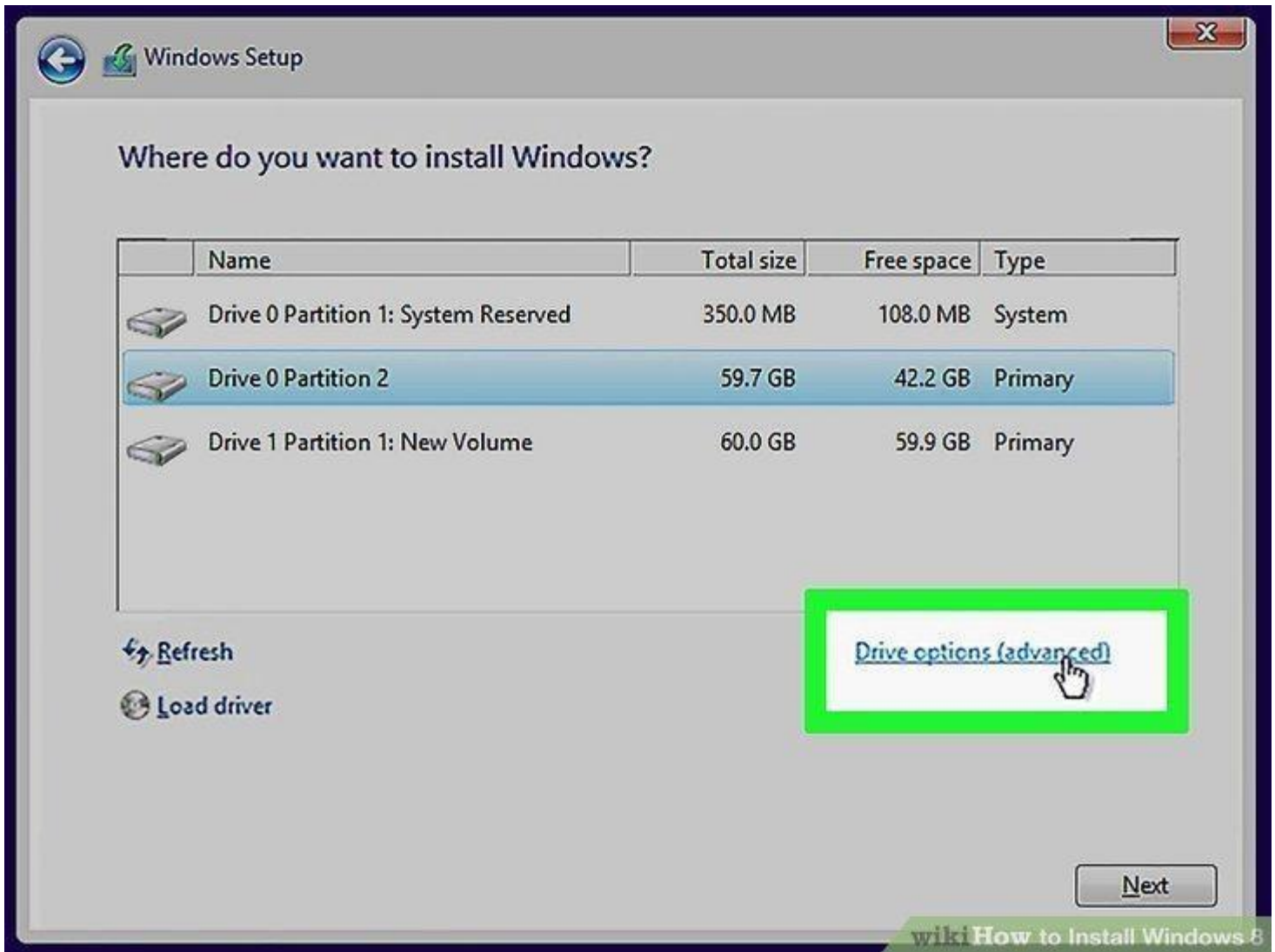
Check the "I accept" box. It's near the bottom of the window.



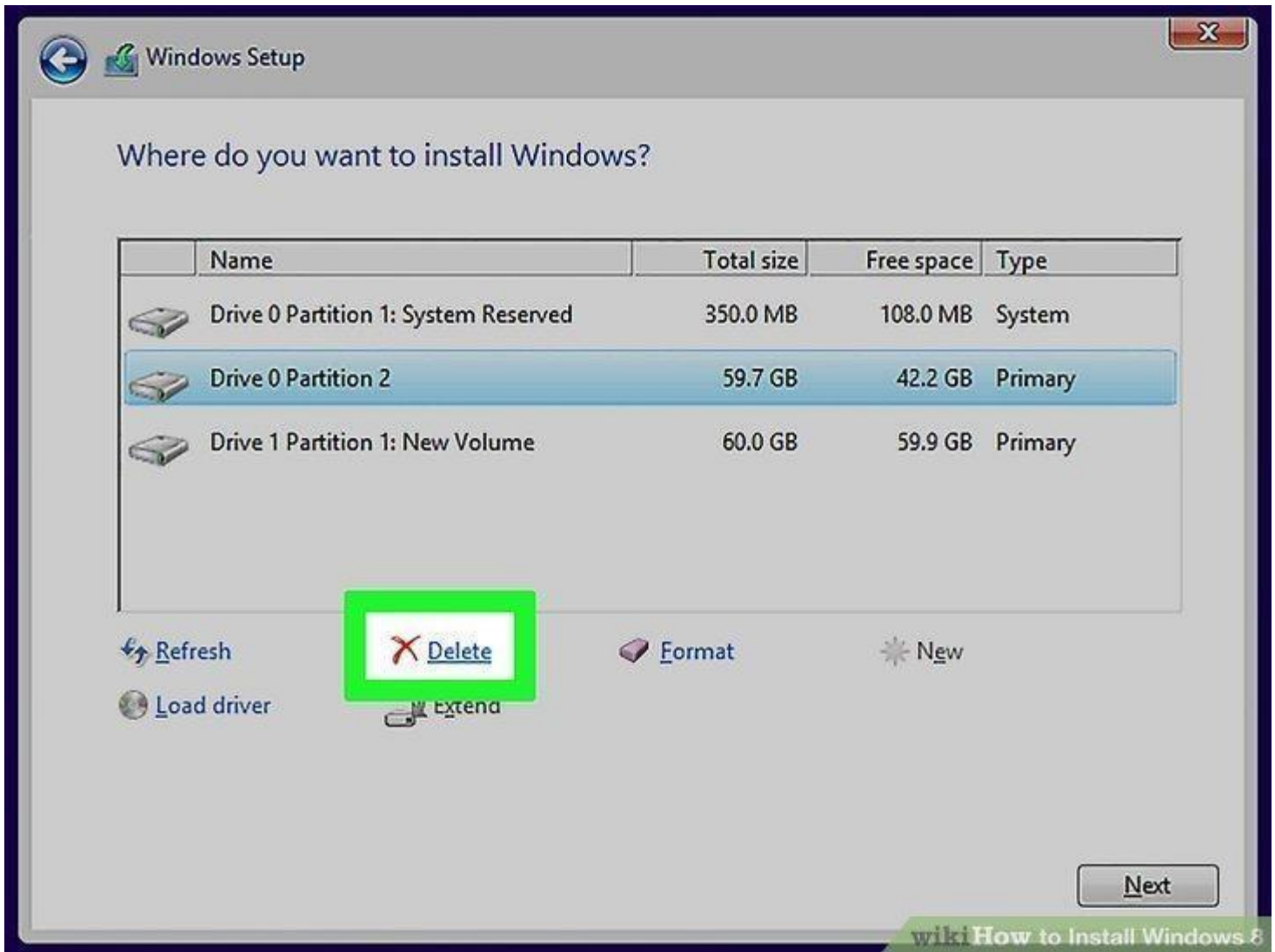
Click the accept checkbox. This option is in the bottom-left corner of the window then click [Next] at the bottom right.



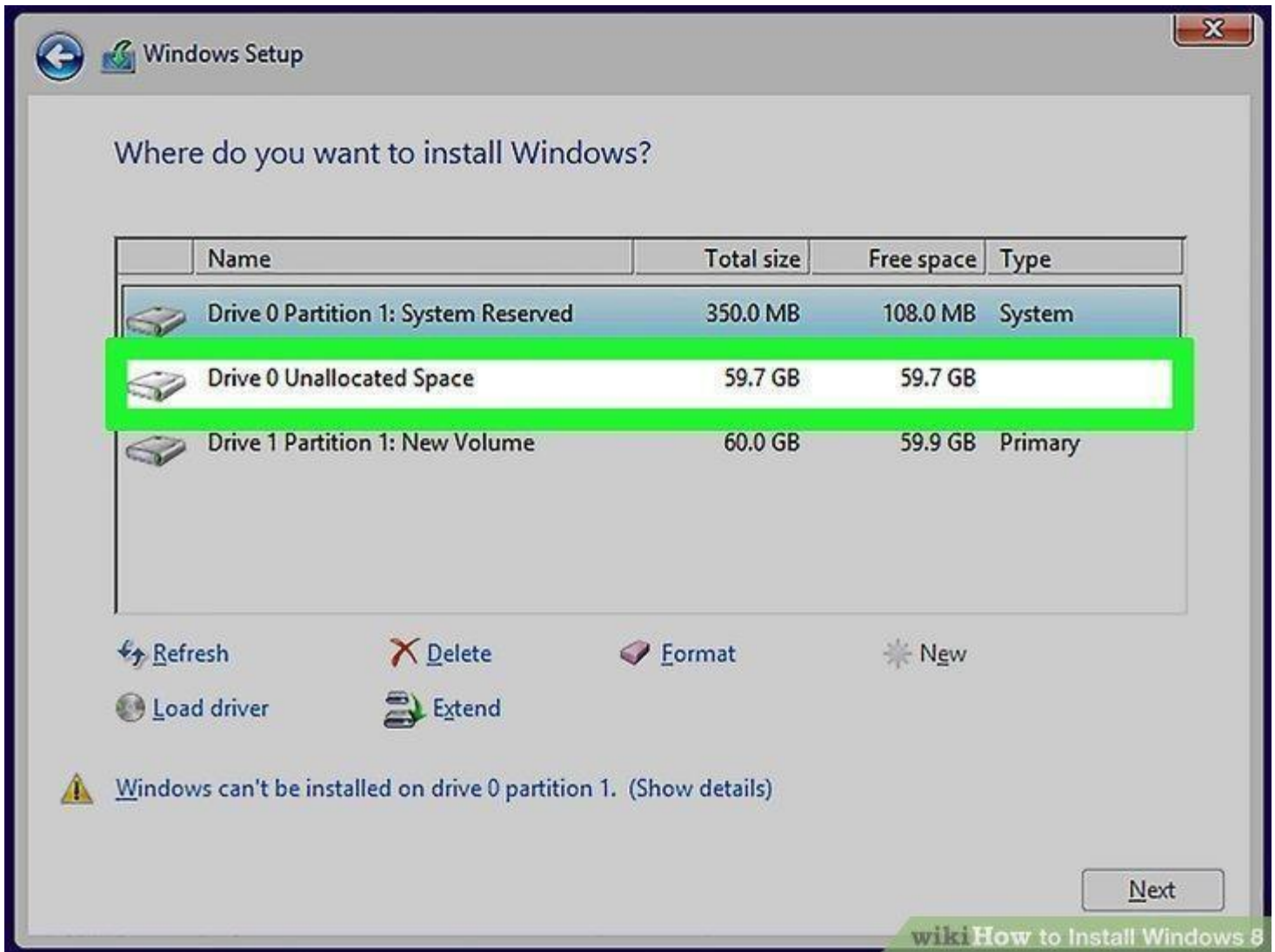
Click the big windows that says "Custom: Install Windows only" It's an option on the "Which Type of Installation do you Want" screen.



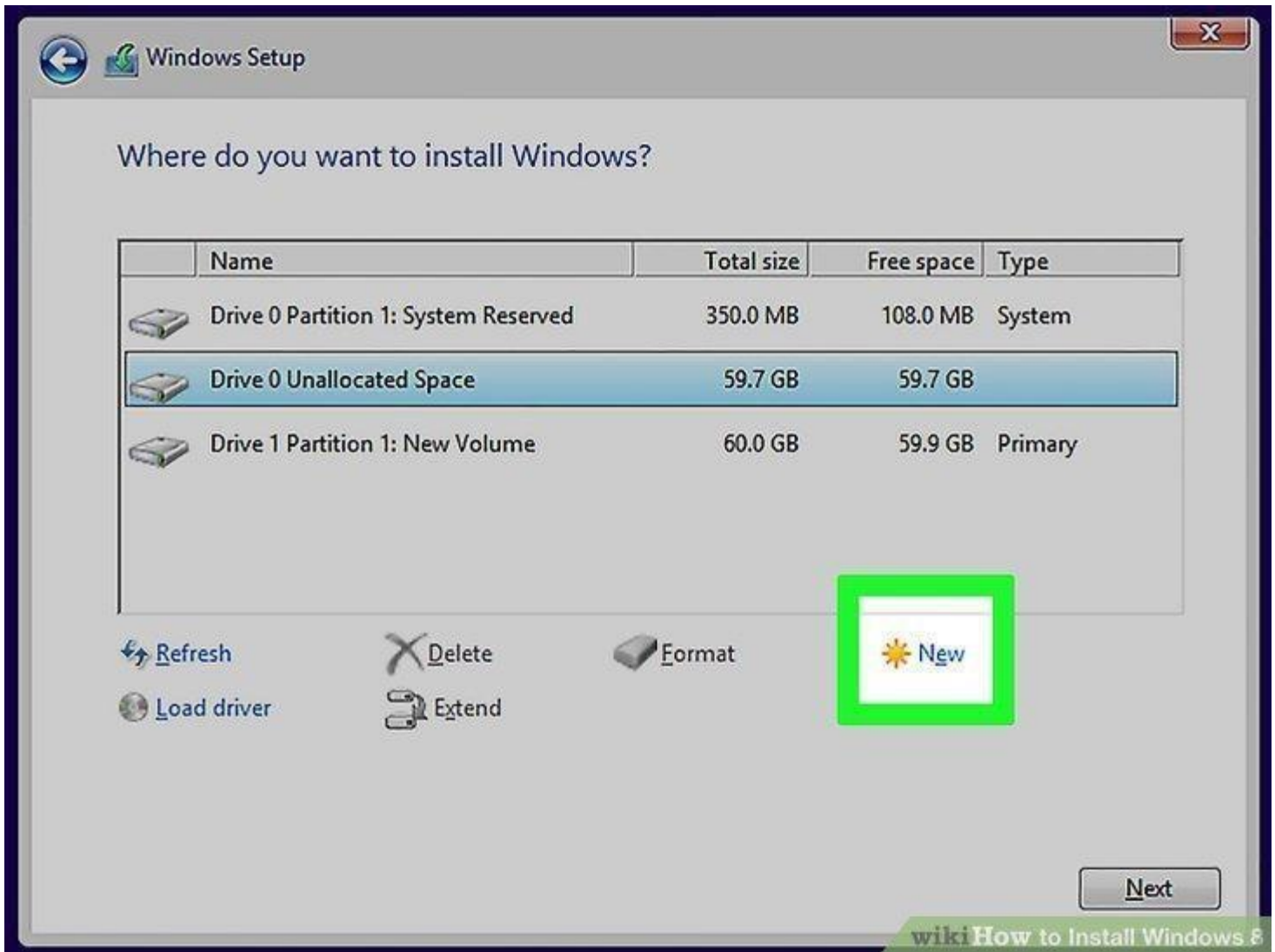
Click the "drive options (advanced)" link, You should see this option near the middle of the page.



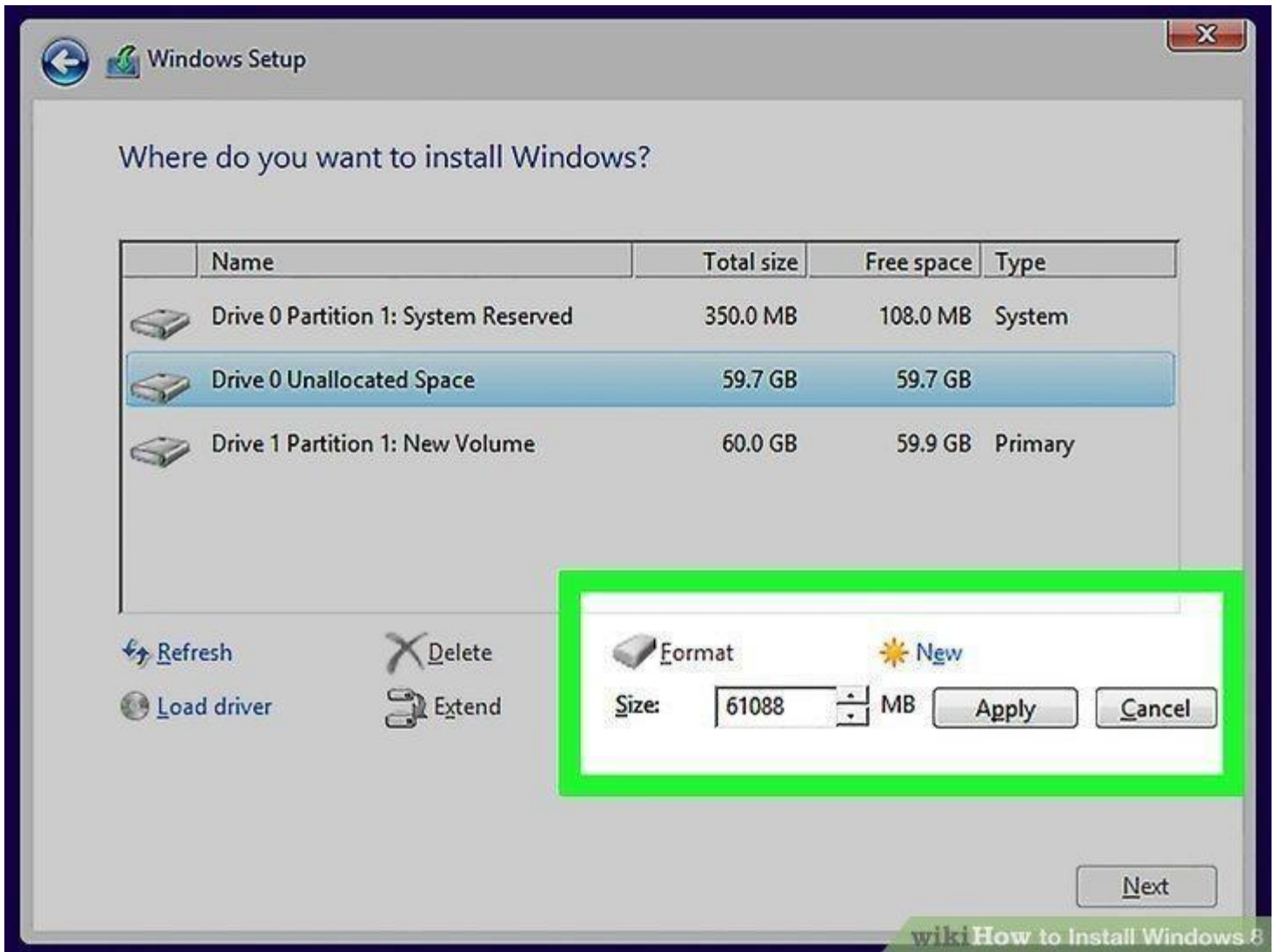
Delete the existing information. In the window near the top of the page, click a drive name, then click Delete and confirm the decision if prompted. Repeat this process for all drives listed.



Click "Unallocated Space" This should be the only option in the window near the top of the page.

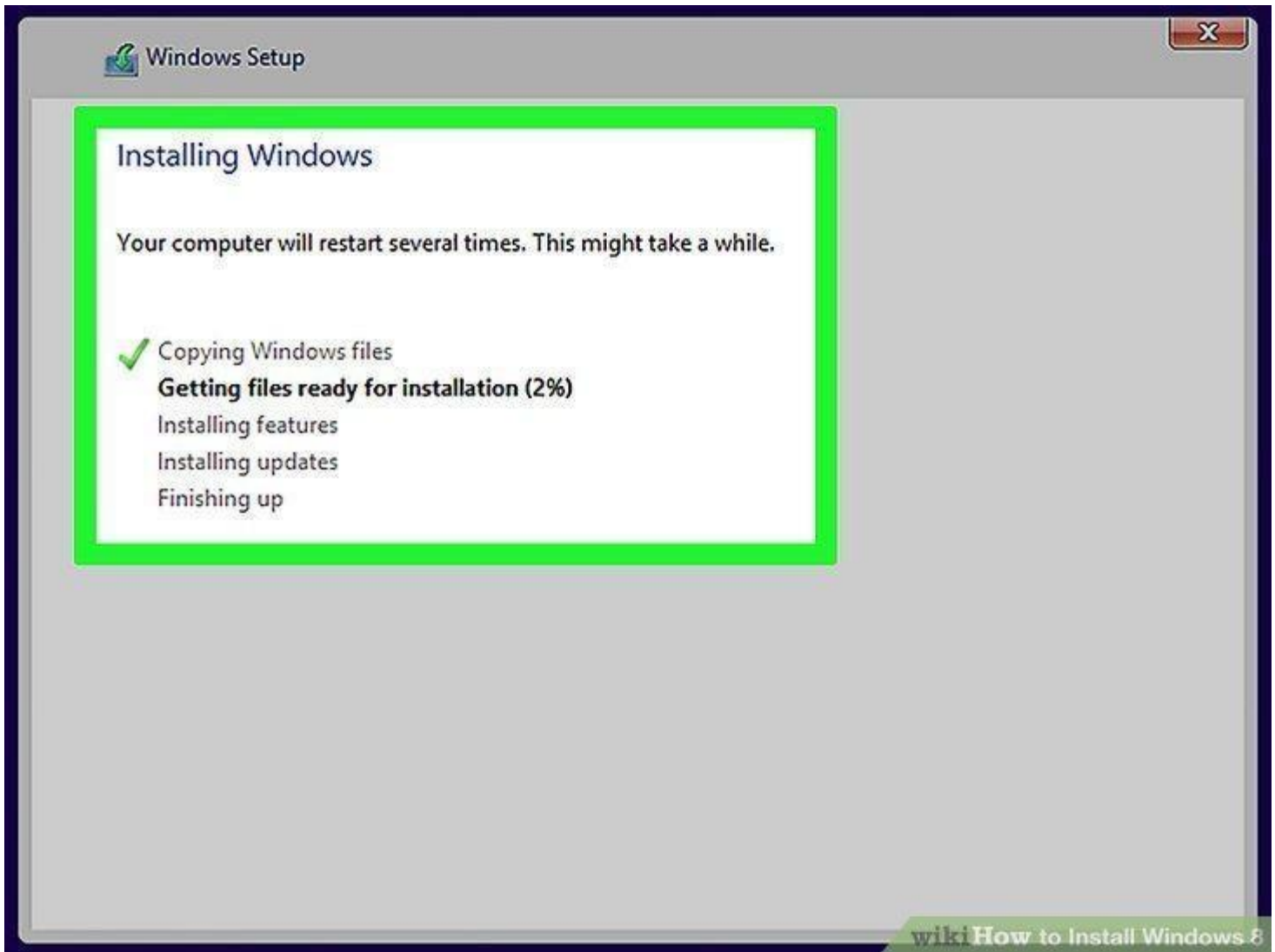


Click the "new" link, It's near the bottom of the page.



Click the [Apply] button and then the [Next] button, both are at the bottom of the page.

Doing so will confirm your installation location and begin installing Windows 8 onto your computer.

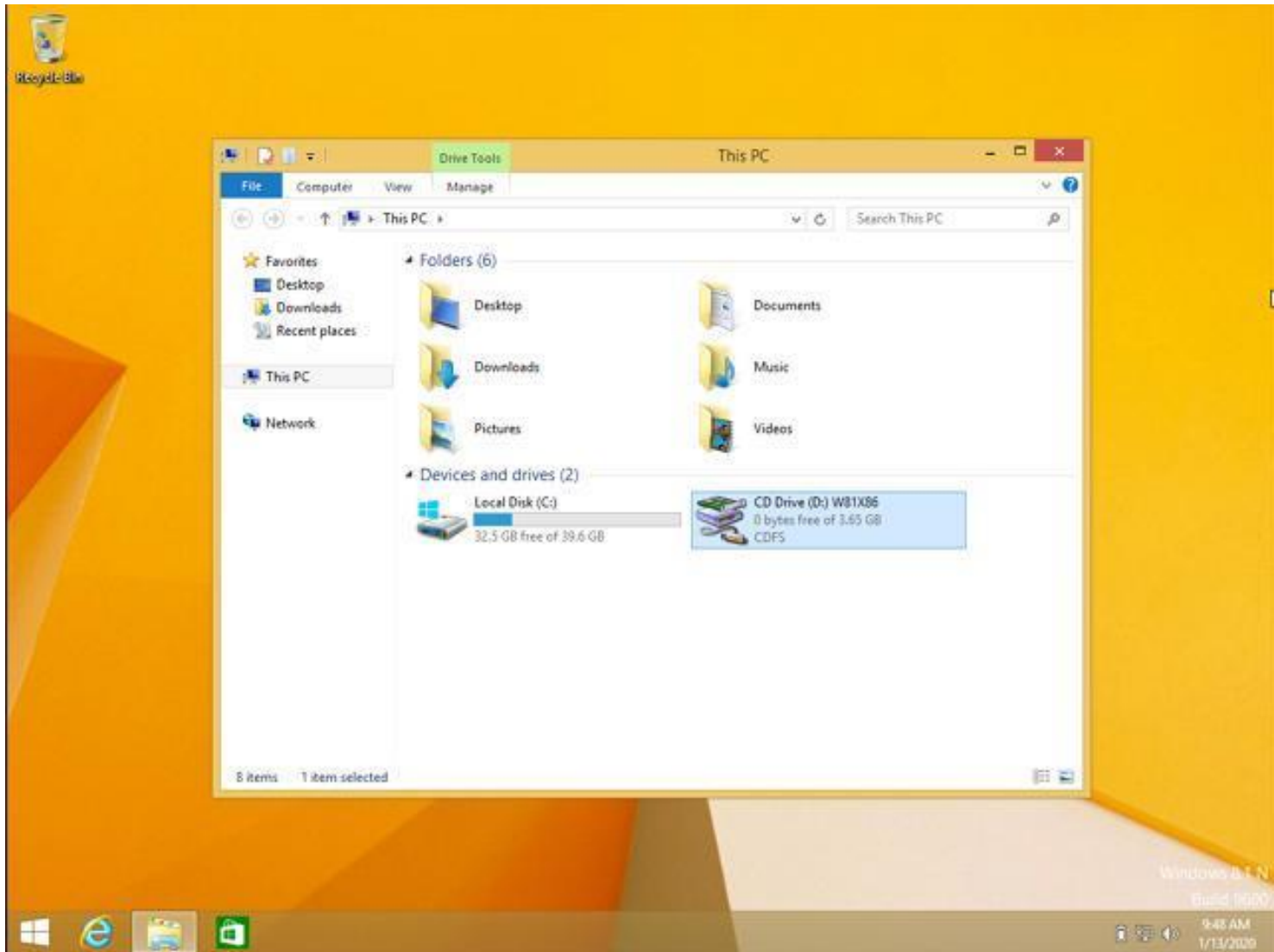


Wait for Windows 8 to finish installing. Your computer will restart multiple times during the installation process. Once Windows 8 is done installing, you should be at the login screen.

You may be prompted to do some personalization work (e.g., selecting a theme and colour) before you can continue to use Windows 8.

Most of your hardware should be installed automatically, but you may have to get drivers for more specialized hardware or download the latest versions

from the manufacturers. We have included our driver setup software to make this process easier for you.



Insert your driver recovery resource DVD and browse to your optical drive. Then double click the setup icon and follow the instructions on the screen shots below. If you are using a USB then just navigate to your USB and double click driver-setup.



Application Tools CD Drive (D:) W81X86

File Home Share View Manage

This PC > CD Drive (D:) W81X86

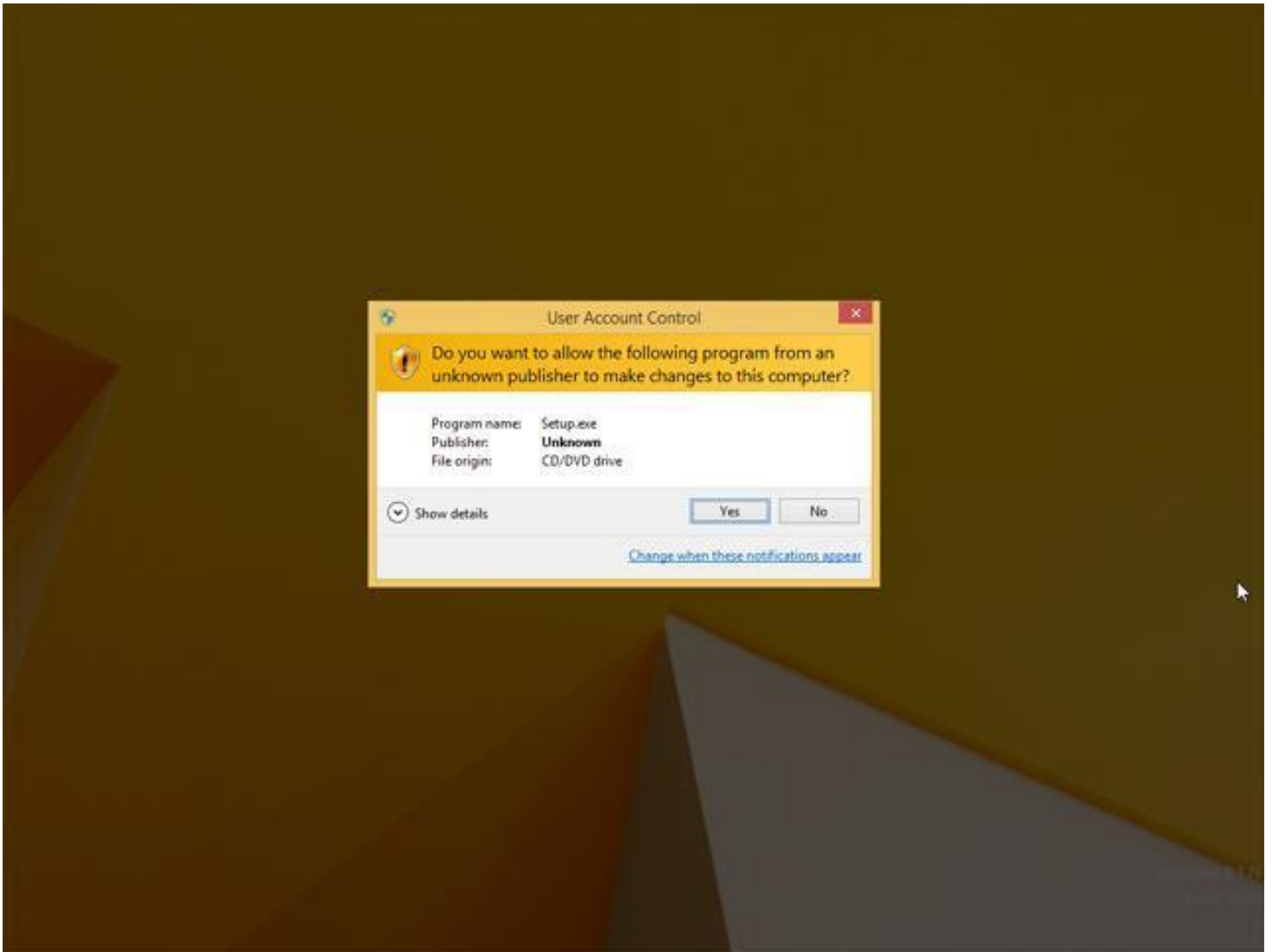
Search CD Drive (D:) W81X86

Name	Date modified	Type	Size
Drivers	4/21/2019 1:35 PM	File folder	
AUTORUN	4/20/2019 7:27 AM	Setup Information	1 KB
Setup	4/29/2019 1:51 AM	Windows Batch File	1 KB

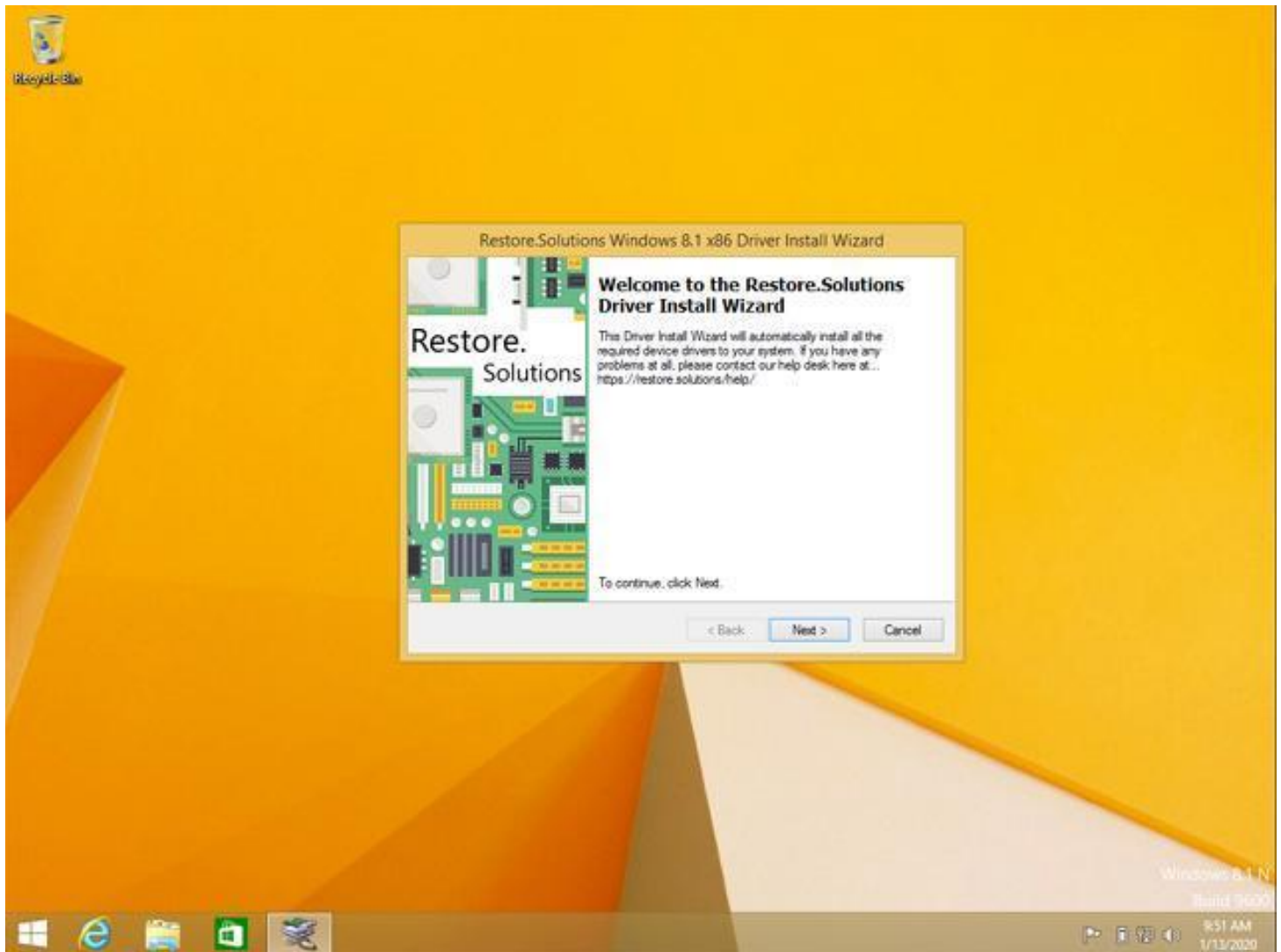
3 items 1 item selected 58 bytes



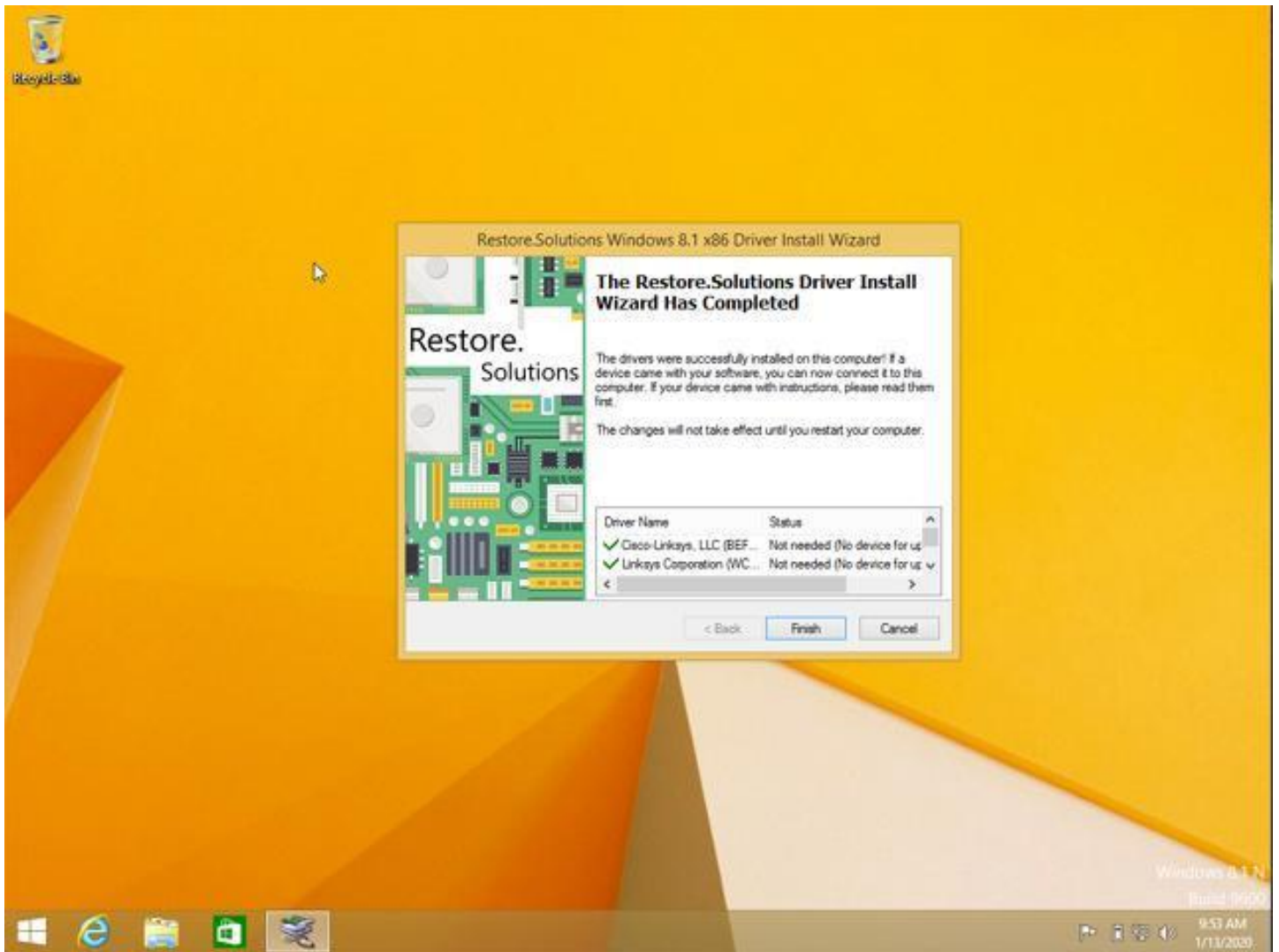
Windows 8.1 N
Build 9600
9:49 AM
1/13/2020



Click Allow if you are prompted to grant access to the software to install the drivers.



Then click the next button and accept the software license if you are asked to.



The driver install may take up to 15 minutes to complete so be patient. Once complete you will see a box, the same as the one above. Click finish and you are done.

If you have any issues at all please contact us!