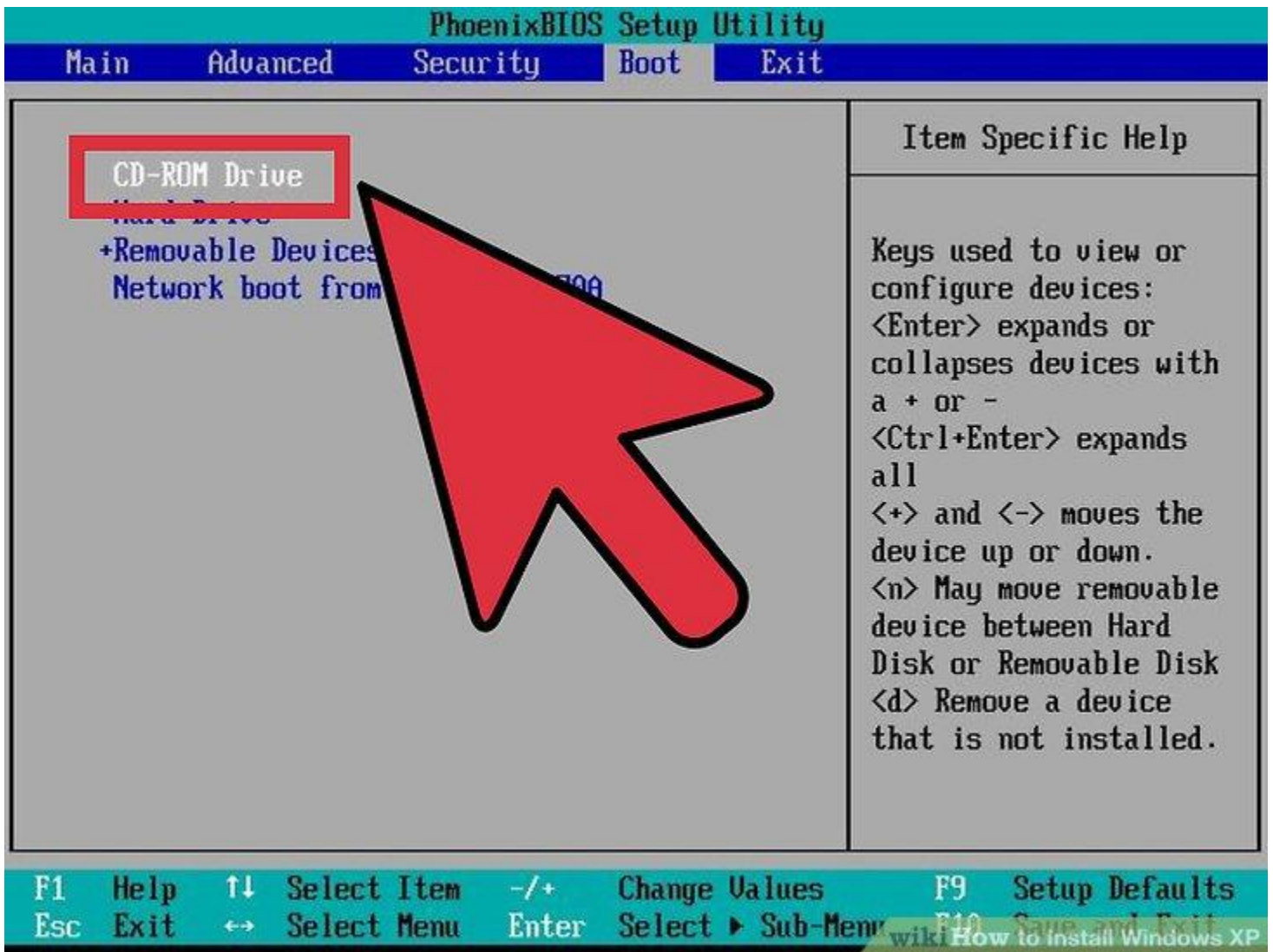
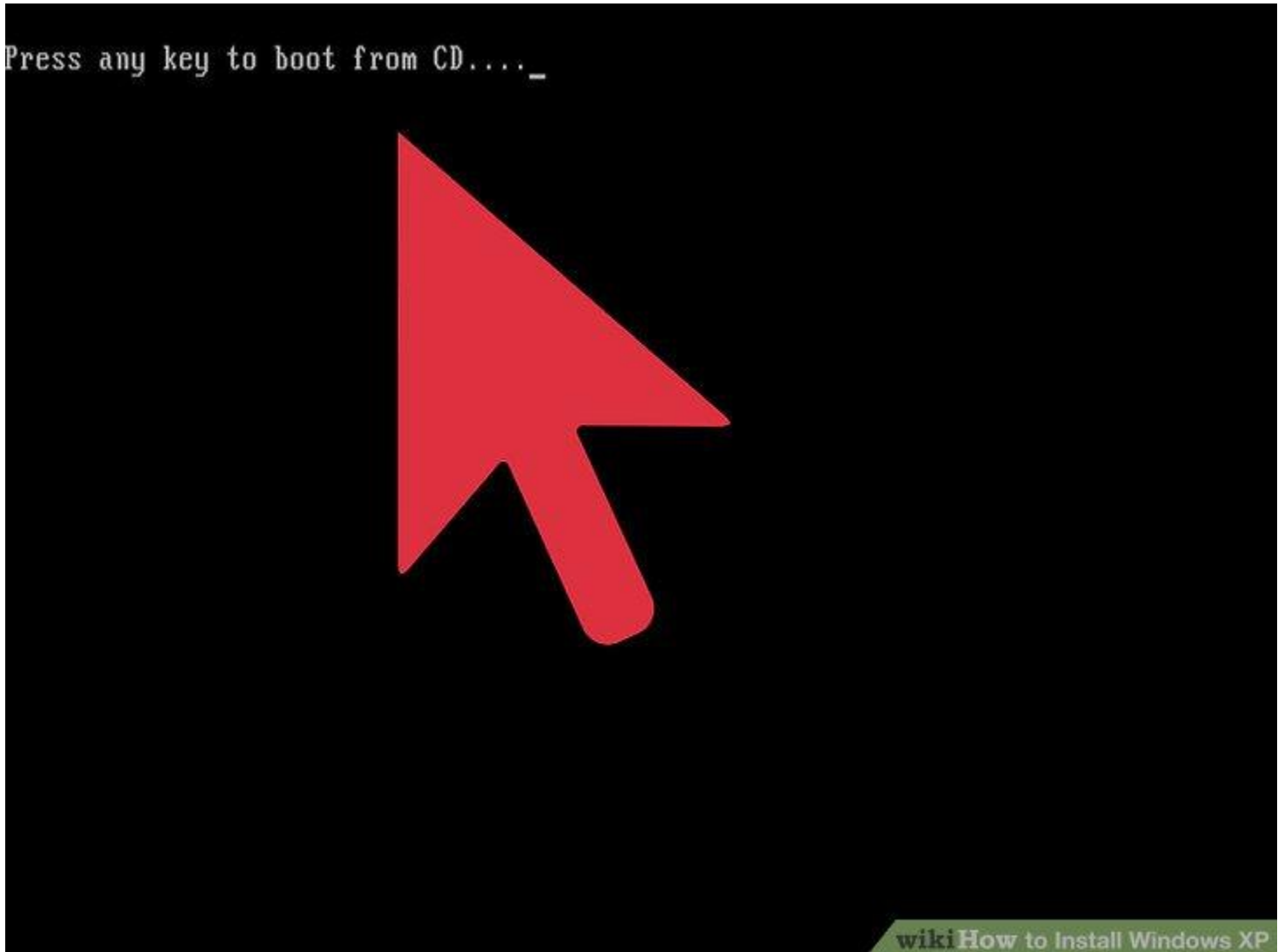


- The First disk you will need is the one labeled "Operating System Recovery" Only this disk will boot up.



- Set your computer to boot from CD/DVD. Before inserting the CD, you'll need to set your computer to boot from a CD instead of from the hard drive. This will allow you to load the Windows XP setup files before your computer boots to its installed operating system. You can change the boot order from the BOOT menu in your [BIOS](#).
- To enter the BIOS of your computer, you usually press F9 or DEL when your computer starts or notifies you that you can enter "setup". Click the green "BIOS" link for more information.
- In the BOOT menu, set the order so that your CD/DVD-ROM drive is set as the 1st Boot Device.

- If you are installing Windows XP from a [USB drive](#), make sure that the USB drive is set as the 1st Boot Device. You may need to have the USB drive inserted for it to appear as an option.



- **Load the installer.** Once your Boot Order is set, insert the Windows XP CD into your drive and Save and Exit from the BIOS. Your computer will reboot and you will be presented with the message: Press any key to boot from CD. Press any key on your keyboard to start the Setup program.
- Setup will load files necessary to begin the installation, which may take a few moments. Once the loading is complete, you will be taken to the Welcome screen.

Windows XP Professional Setup

Welcome to Setup.

This portion of the Setup program prepares Microsoft(R)
Windows(R) XP to run on your computer.

- To set up Windows XP now, press ENTER.
- To repair a Windows XP installation using
Recovery Console, press F.
- To quit Setup without installing Windows XP, press F3.



ENTER=Continue R=Repair F3=Quit

wiki How to Install Windows XP

- Press ENTER to begin installation. Once the loading is complete, you will be taken to the Welcome screen. You are given several options, but if you are installing or reinstalling Windows XP, you'll want to press ENTER to start the installation configuration.

Windows XP Licensing Agreement

Microsoft(R) Windows(R) XP Professional, Microsoft(R)
Windows(R) XP Tablet PC Edition and Microsoft(R) Windows(R) XP
Media Center Edition 2004

END-USER LICENSE AGREEMENT FOR MICROSOFT SOFTWARE

IMPORTANT-READ CAREFULLY: This End-User License Agreement ("EULA") is a legal agreement between you (either an individual or a single entity) and the manufacturer ("Manufacturer") of the computer system or computer system component ("HARDWARE") with which you acquired the Microsoft software product(s) identified on the Certificate of Authenticity ("COA") affixed to the HARDWARE or on the associated product documentation ("SOFTWARE"). The SOFTWARE includes Microsoft computer software, and may include associated media, printed materials, "online" electronic documentation, and Internet based services. Microsoft, however, may provide software, documentation, or web services that are not part of the SOFTWARE, or accessible via the SOFTWARE, which are governed by their own license agreements or terms of service, which may be governed by such agreements rather than the terms of this EULA. Any such terms of a printed paper EULA, which may accompany the SOFTWARE, supersede the terms of any on-screen EULA. This EULA is valid and grants the end-user rights ONLY if the SOFTWARE is accompanied by a genuine Certificate of Authenticity. For more information concerning whether your software is genuine,

F8=I agree ESC=I do not agree PAGE DOWN=Next Page

wikiHow to Install Windows XP

- **Read the License Agreement.** This document tells you what you can and can't do with Windows and your rights as the consumer. After reading, press F8 indicating you agree to the terms.

Windows XP Professional Setup

The following list shows the existing partitions and unpartitioned space on this computer.

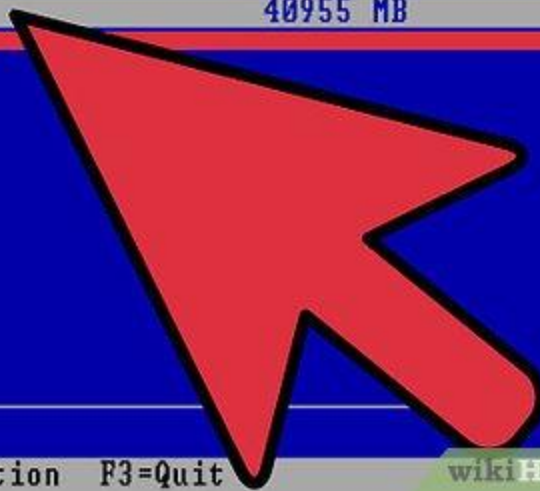
Use the UP and DOWN ARROW keys to select an item in the list.

- To set up Windows XP on the selected item, press ENTER.
- To create a partition in the unpartitioned space, press C.
- To delete the selected partition, press D.

40955 MB Disk 0 at Id 0 on bus 0 on atapi [MBR]

Unpartitioned space

40955 MB



ENTER=Install C=Create Partition F3=Quit

wikiHow to Install Windows XP

- **Select the partition you want to install on.** You will see a list of available partitions on your installed hard drives. If you are installing Windows XP on a new hard drive, you should see only one entry labeled "Unpartitioned space." If you have a previous version of Windows or Linux installed on your computer, you will potentially have multiple partitions.
- Installing Windows XP will erase all of the data on the partition that you choose. Select a partition that is empty or that contains data that you do not care to lose.
- You can delete your partitions with the "D" key. This will return them to "Unpartitioned space". Any data on the partition will be lost when it is deleted.

Windows XP Professional Setup

You asked Setup to create a new partition on
40955 MB Disk 0 at Id 0 on bus 0 on atapi [MBR].

- To create the new partition, enter a size below and press ENTER.
- To go back to the previous screen without creating the partition, press ESC.

The minimum size for the new partition is 1536 megabytes (MB).
The maximum size for the new partition is 40955 megabytes (MB).
Create partition of size (in MB):

ENTER=Create ESC=Cancel

wikiHow to Install Windows XP

- **Create a new partition.** Select the Unpartitioned space and press "C". This will open a new screen where you can set the partition's size from the available space. Enter the size in megabytes (MB) for the new partition and then press ENTER.
- By default, the partition will be set to the maximum amount of available space. Unless you plan on creating multiple partitions, you can usually leave this at its default.
- Windows XP requires at least 1.5 gigabytes (1536 MB) for its installation files, but you will want more than this for programs, documents, downloads, and other files. 5 gigabytes (5120 MB) is a good baseline amount for Windows XP, with more if you plan on installing a lot of programs.
- You can create multiple partitions on a single drive. This can allow you to separate your programs from your movies and music, or to install another operating system. Windows XP can only be installed on one discrete partition.

Windows XP Professional Setup

The following list shows the existing partitions and unpartitioned space on this computer.

Use the UP and DOWN ARROW keys to select an item in the list.

- To set up Windows XP on the selected item, press ENTER.
- To create a partition in the unpartitioned space, press C.
- To delete the selected partition, press D.

40955 MB Disk 0 at Id 0 on bus 0 on atapi [MBR]

C:	Partition1 [New (Raw)]	20003 MB (20002 MB free)
E:	Partition2 [New (Raw)]	20944 MB (20944 MB free)
	Unpartitioned space	8 MB



ENTER=Install D=Delete Partition F3=Quit

wikiHow to Install Windows XP

- **Select your new partition.** Once you've created your installation partition, you will be returned to the partition selection screen. Select your new partition, usually labeled "C: Partition 1 [Raw]" and press ENTER.

Windows XP Professional Setup

The partition you selected is not formatted. Setup will now format the partition.

Use the UP and DOWN ARROW keys to select the file system you want, and then press ENTER.

If you want to select a different partition for Windows XP, press ESC.

Format the partition using the NTFS file system (Quick)

Format the partition using the FAT file system (Quick)

Format the partition using the NTFS file system

Format the partition using the FAT file system

ENTER=Continue ESC=Cancel

wiki How to Install Windows XP

- Select "Format the Partition using the NTFS File System" and press ENTER. NTFS is the preferred method, supporting a larger amount of disk space per partition than FAT, and including security features at the file system level. NTFS also includes system level compression. There are almost no situations anymore where choosing FAT would be preferable.
- If your partition size is larger than 32 GB, you will not be given the option to choose FAT.
- It is highly recommended to avoid Quick Format, as this skips an important process that checks the hard drive for errors or bad sectors. This scan is what consumes the majority of the time taken when performing a full format. If there are errors on a disk at the physical level, it's best to catch them now rather than later.

Windows XP Professional Setup

Please wait while Setup formats the partition
C: Partition1 [Unknown] MB (20002 MB free)
on 40955 MB Disk 0 on atapi [MBR].

Setup is formatting...

20%



wikiHow to Install Windows XP

- **Wait for the format to complete.** The system will now format the partition. The length of time this process requires depends on the speed and size of the drive. In general, the larger the partition, the longer the process will take.

Windows XP Professional Setup

Please wait while Setup copies files
to the Windows installation folders.
This might take several minutes to complete.

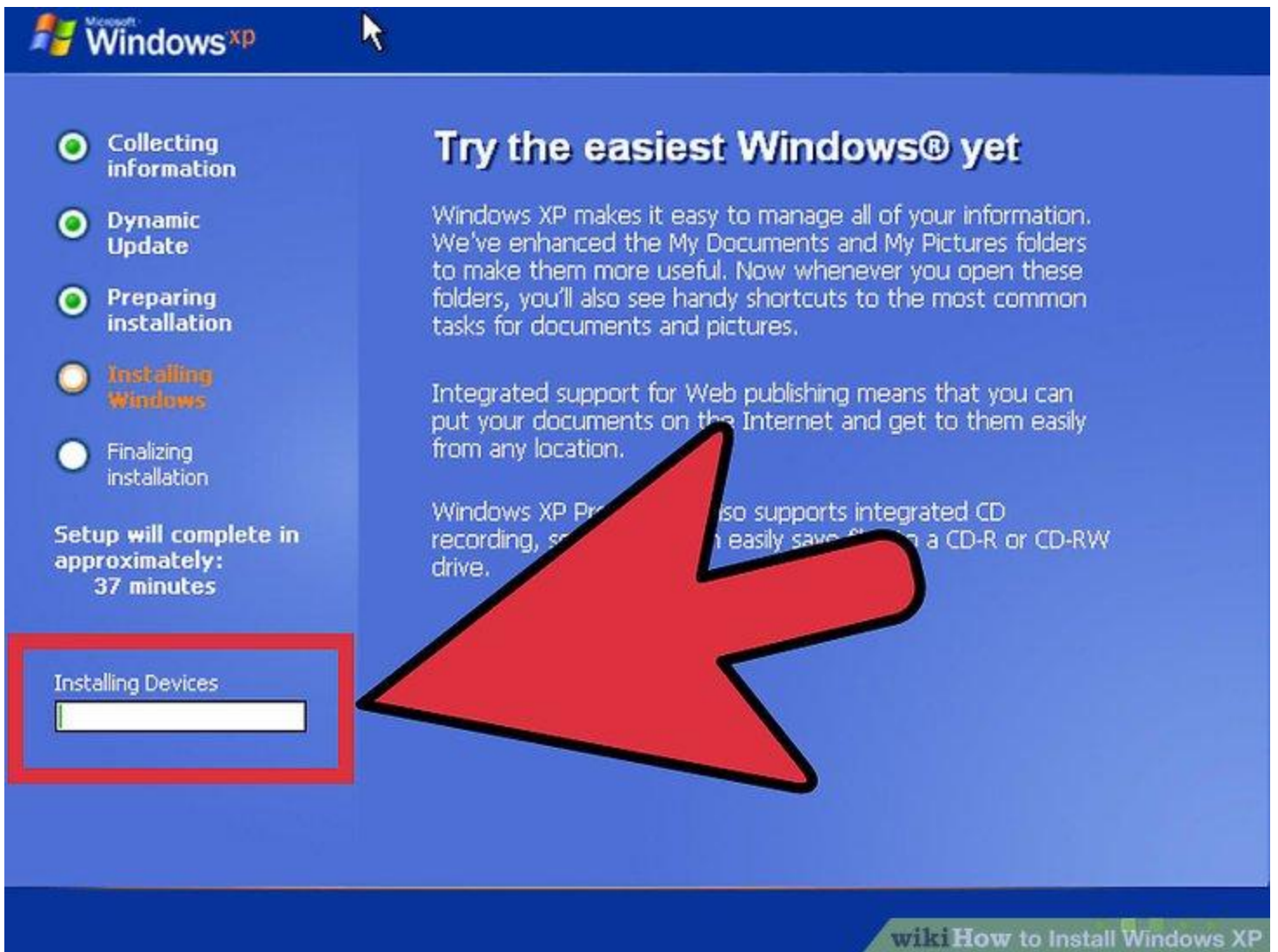


with How to Install Windows XP

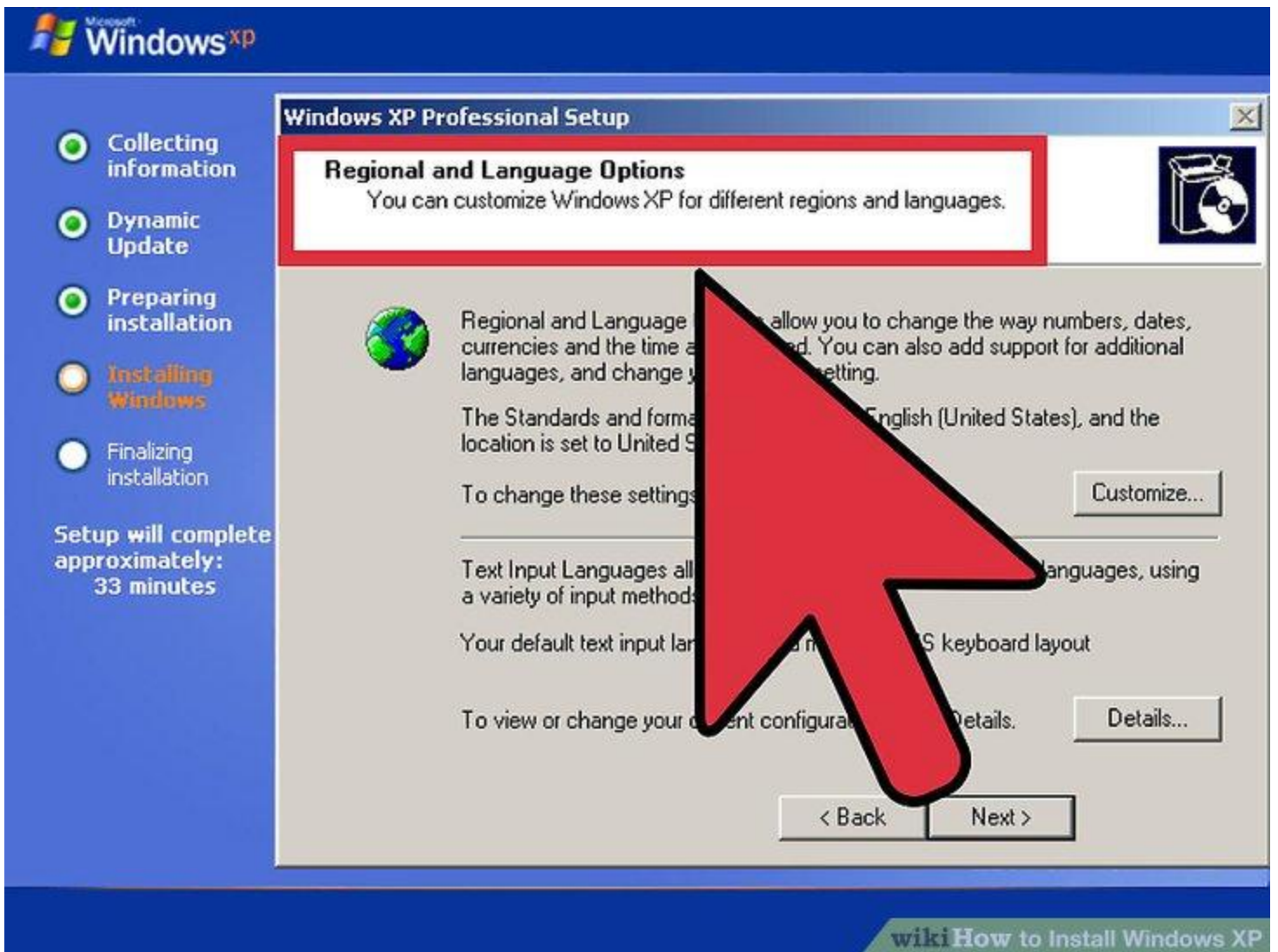
- **Wait for the Setup files to copy.** Windows will now start copying files from the installation disc and prompt you to reboot the computer when the process is completed. Press ENTER when prompted to reboot, otherwise it will do so automatically after 15 seconds.



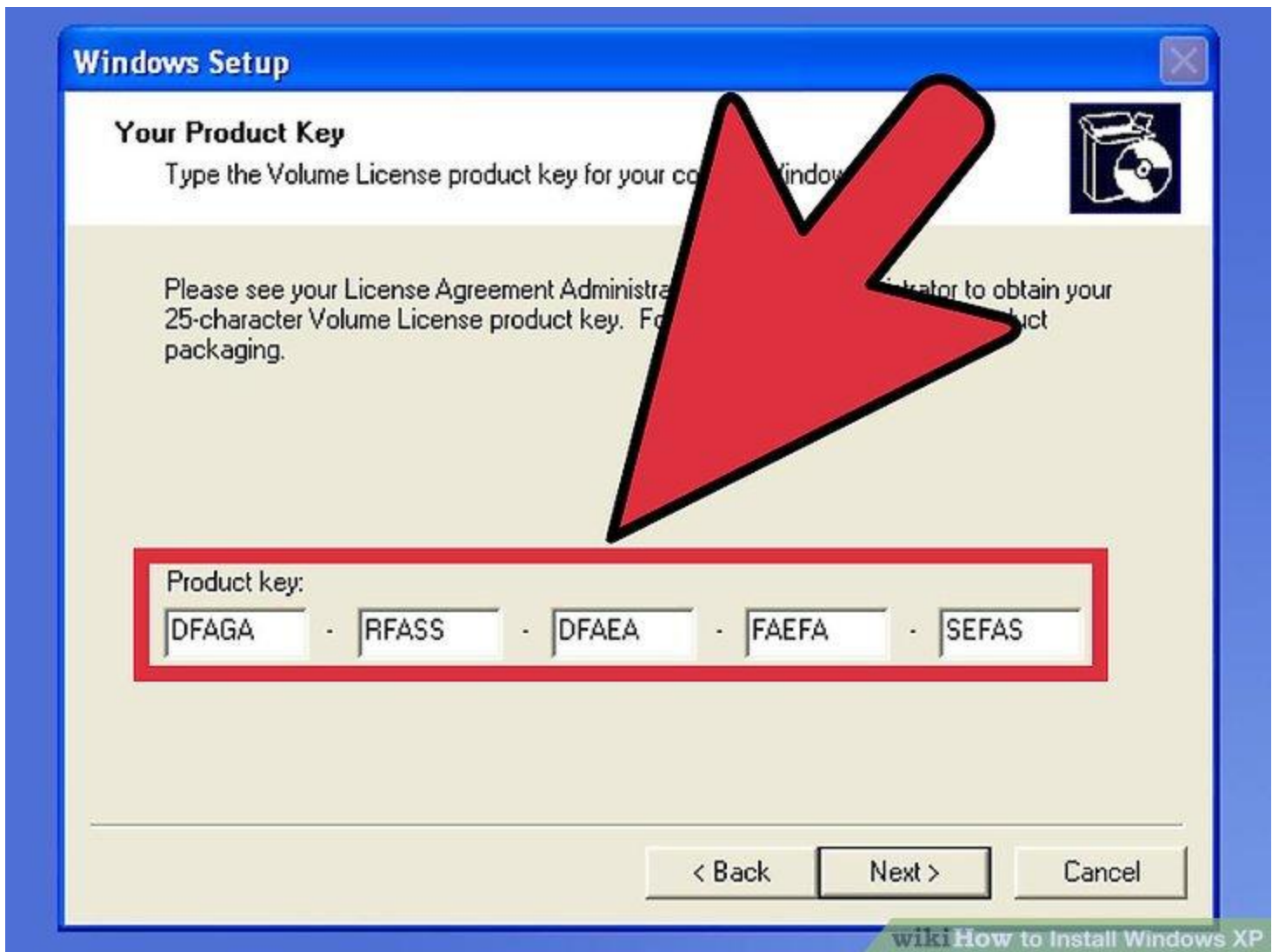
- Allow the computer to boot normally. You will see the message asking you to press a key to boot from CD. Ignore it and allow the computer to continue booting from the hard drive. You will see the Windows logo as the Setup program loads.



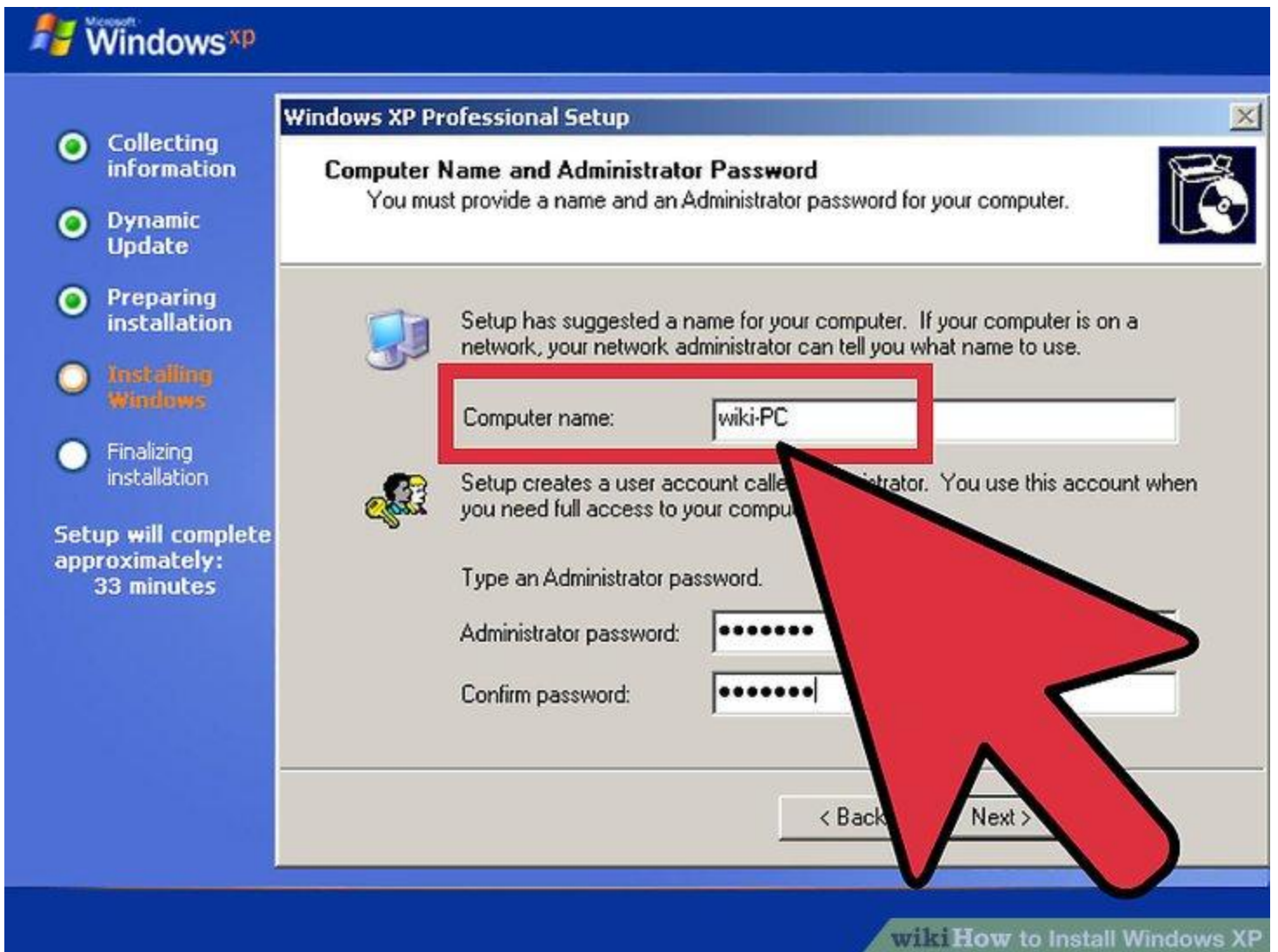
- Wait for the installation to proceed. After the Windows logo goes away, you will see a list of steps remaining on the left side of the screen, and tips for using windows on the right. The time remaining for the installation will be displayed below the list of steps remaining.
- It is normal for the screen to flicker, turn on and off, or resize during this process.



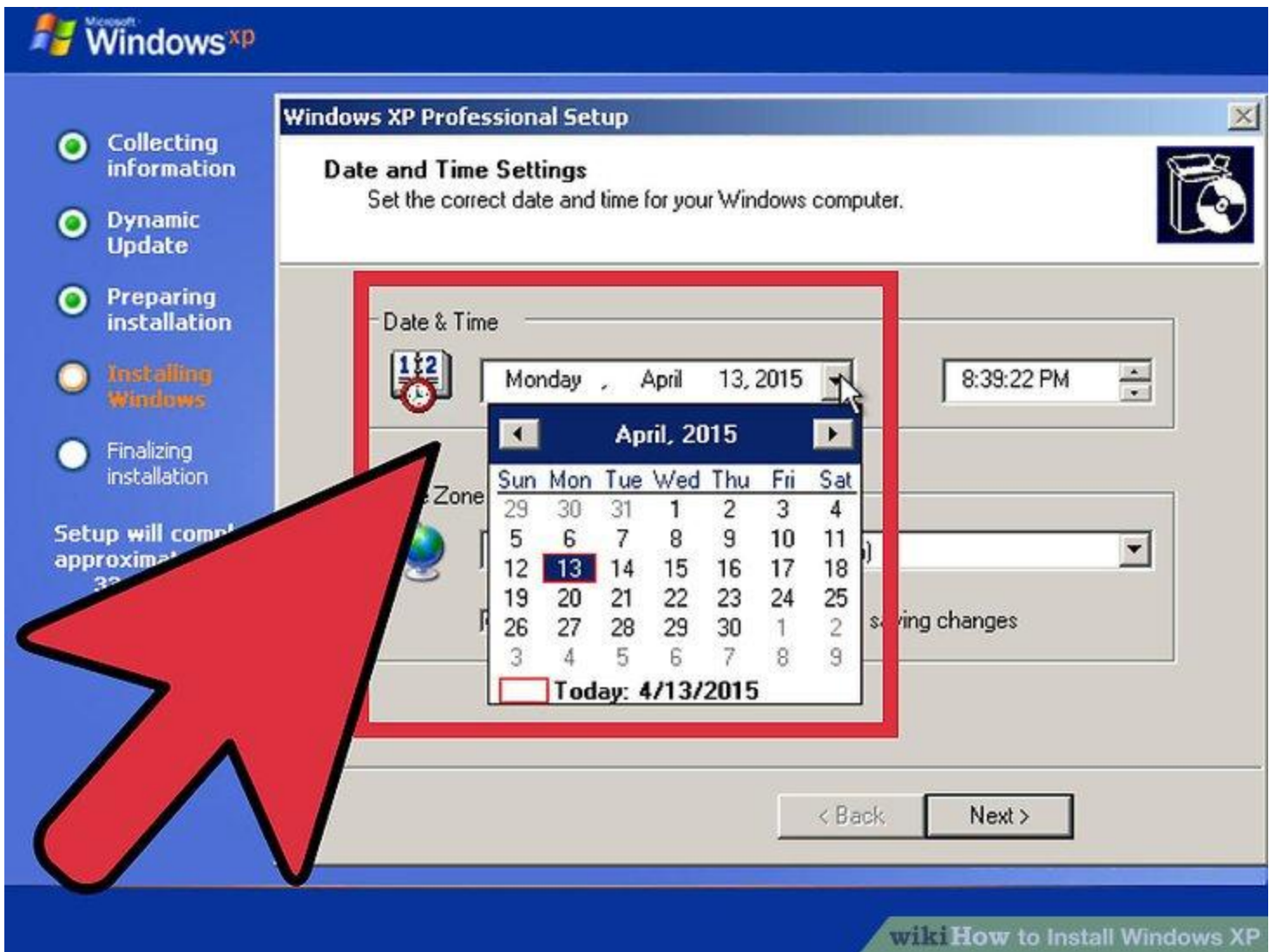
- Choose your language and region settings. During the installation process a dialog window will appear, asking you to choose your Regional settings. Select appropriate settings native to your area. Click the Next button when that is completed.
- Enter your full name if you want. This will be set as the “owner” of Windows, and will be attached to certain things, such as Document creation.



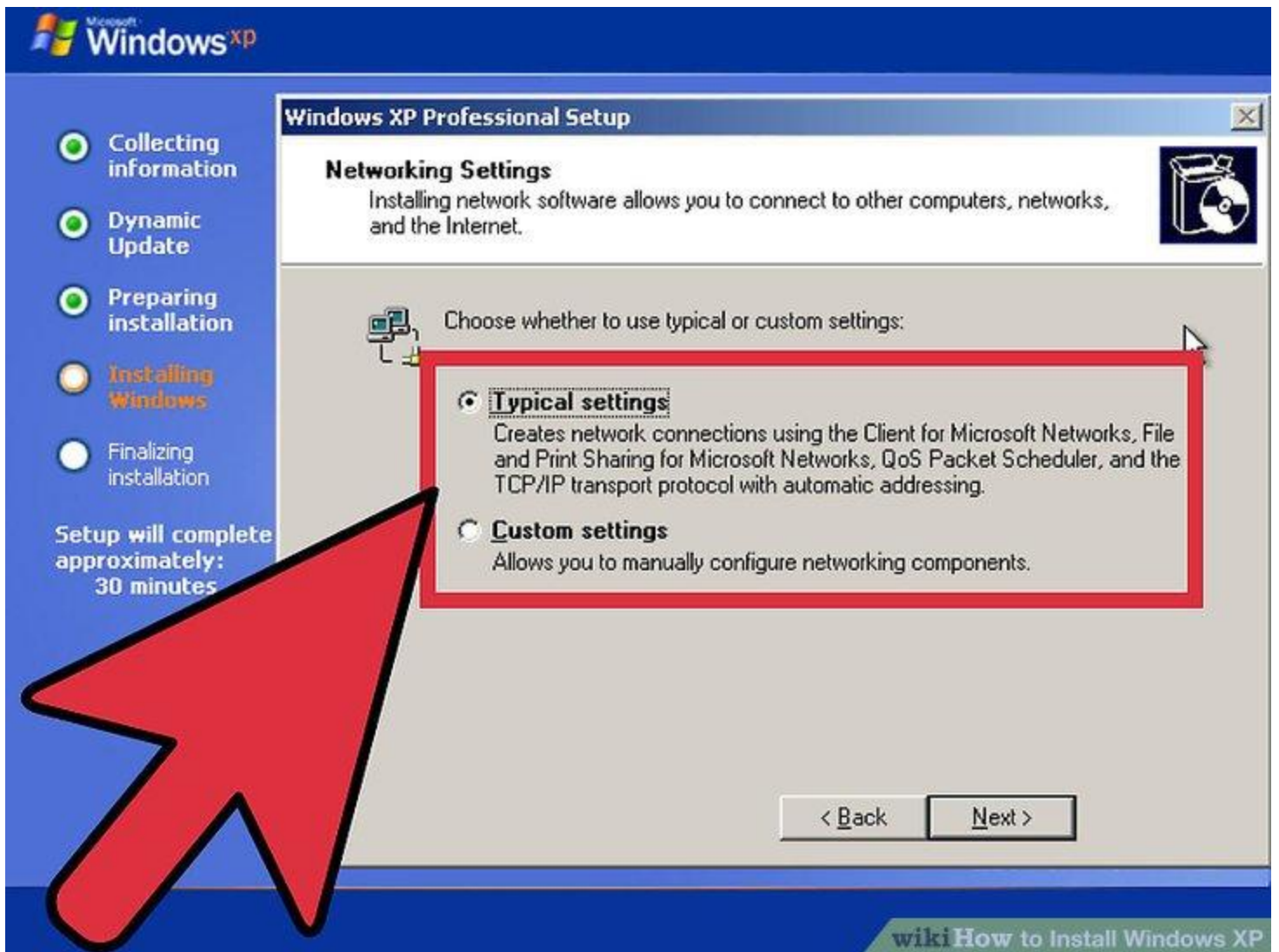
- **Enter your Product Key.** You will not be able to complete the installation process without a valid Product Key. Click "Next" to continue.
- Some versions of Windows will not ask for the Product Key until installation is complete.



- **Set your computer's name.** This will be the name that represents the computer on a network. Windows sets a default name, but you can change it if you would like. You can also set a password for the Administrator account. This is optional, but recommended for public computers.



- Select your time zone. Ensure that the date/time are correct. Click "Next" to continue.



- **Choose your network settings.** Almost all users installing Windows XP on a home or personal computer can leave "Typical Settings" selected for Network Setup. If you are installing Windows XP in a corporate or academic environment, check with the system administrator, though Typical Settings will most likely work.
- In the next window, nearly all users can select "No, this computer is not on a network, or is on a network without a domain." If you are in a corporate setting, ask your system administrator which you should choose.
- You can typically leave the workgroup name set to default.

- Collecting information
- Dynamic Update
- Preparing installation
- Installing Windows
- Finalizing installation**

Setup will complete in approximately:
1 minute

Removing any temporary files used

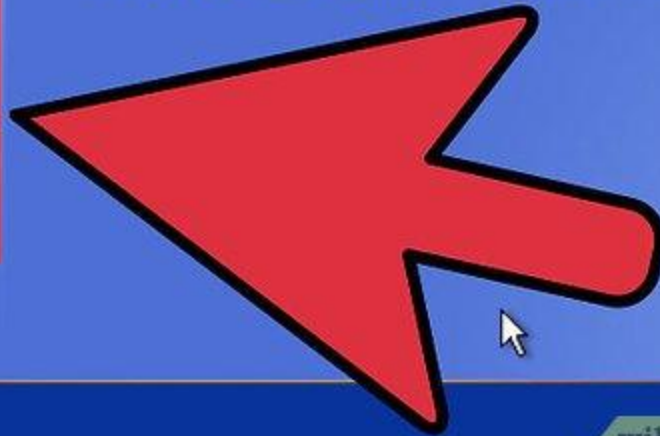


An exciting new look

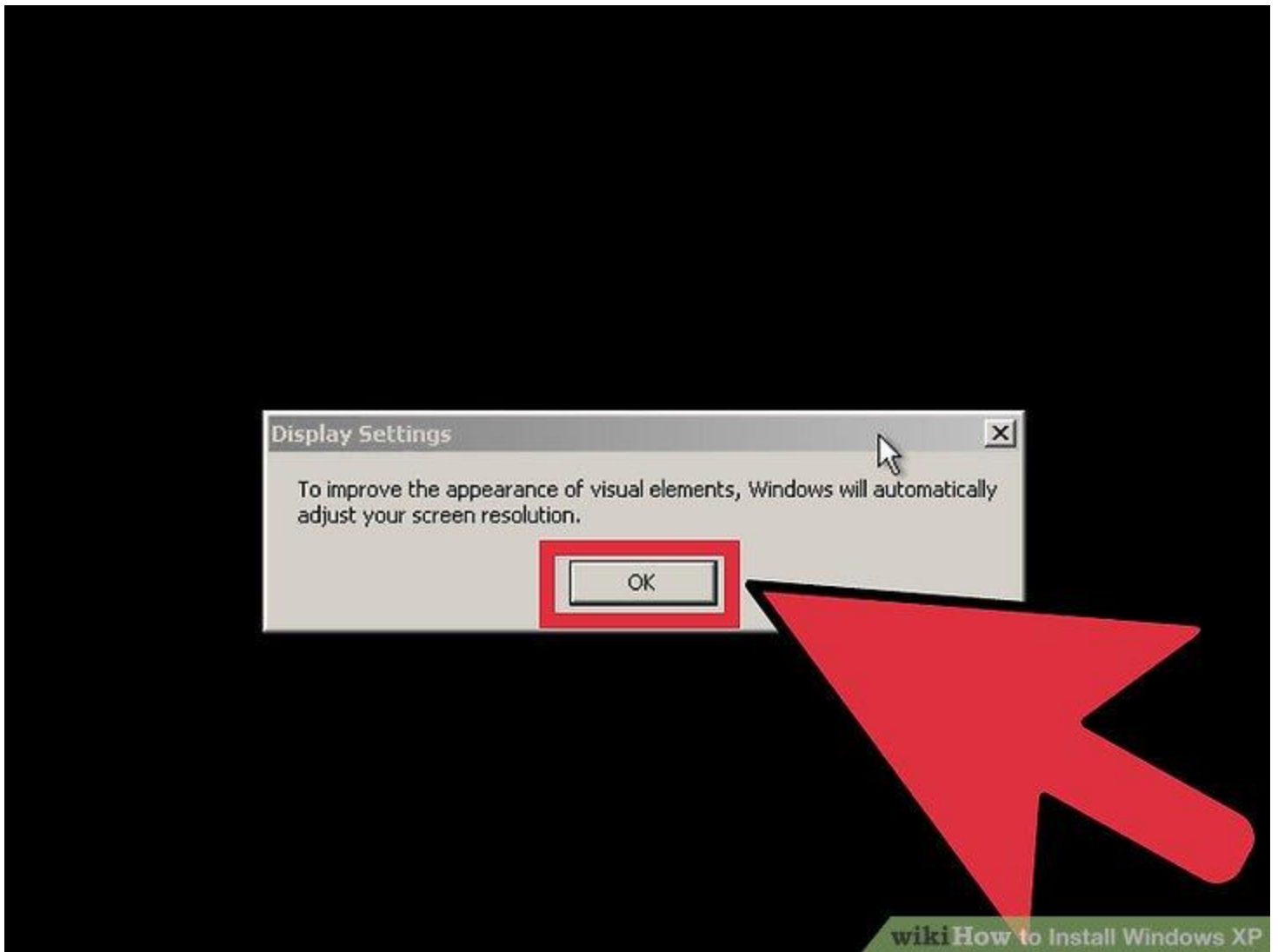
Windows® XP Professional sports a visual design that combines a sleek look, clean lines, and appealing colors with a task-oriented design and exceptionally streamlined navigation.

The redesigned Start menu makes it easier to find important information and to access the programs you use most frequently.

By automatically cleaning up the notification area of the taskbar and grouping related taskbar items, Windows XP makes it easier to switch between programs and to open, view, or close multiple items at the same time.



- **Wait for the installation to finalize.** This will only take a few minutes, and the computer will reboot when it is finished installing. Once the computer reboots, you will be taken to the Windows XP desktop. At this point, installation is complete, though there are a few things left to do before Windows is completely usable.



- **Set your display preferences.** Once Windows loads, you will be told that Windows will automatically configure your display. Click OK to start the configuration. Your screen will flash a couple times, and then you will be asked if you can read the box that appears.



- Set your connection preferences. If your computer is connected to the internet, select your connection type. Press Next to continue.



- **Activate your copy of Windows.** If connected to the Internet, Select "Activate Now." Windows will connect to the activation server and automatically authenticate your copy of Windows. If you haven't entered your Product Key yet, you will need to enter it now

Who will use this computer?

Type the name of each person who will use this computer. Windows will create a separate user account for each person so you can personalize the way you want Windows to organize and display information, protect your files and computer settings, and customize the desktop.

Your name:

wikiHow |

2nd User:

3rd User:

4th User:

5th User:

These names will appear on the Welcome screen in alphabetical order. When you start Windows, click your name on the Welcome screen to begin. If you want to set passwords and limits for each user, or add more user accounts after you finish setting up Windows, just click Control Panel, Start menu, and then click User Accounts.

click Next to press F1.

 Back

Next 

wikiHow to Install Windows XP

- **Create Users.** After the Activation Process, a window will appear allowing you to select the users for the computer. Enter your name, and the names of others who will be using the machine. Press Next to continue.



- **Start using Windows.** You will now be looking at the default Windows XP Desktop. Congratulations! There are a few things that you should probably do now that you have Windows up and running:
- [Install any drivers](#) that you need to for your computer's hardware.
- [Install an antivirus program](#) if you are connected to the internet.
- [Set your BIOS](#) to boot from the hard drive again instead of the CD.