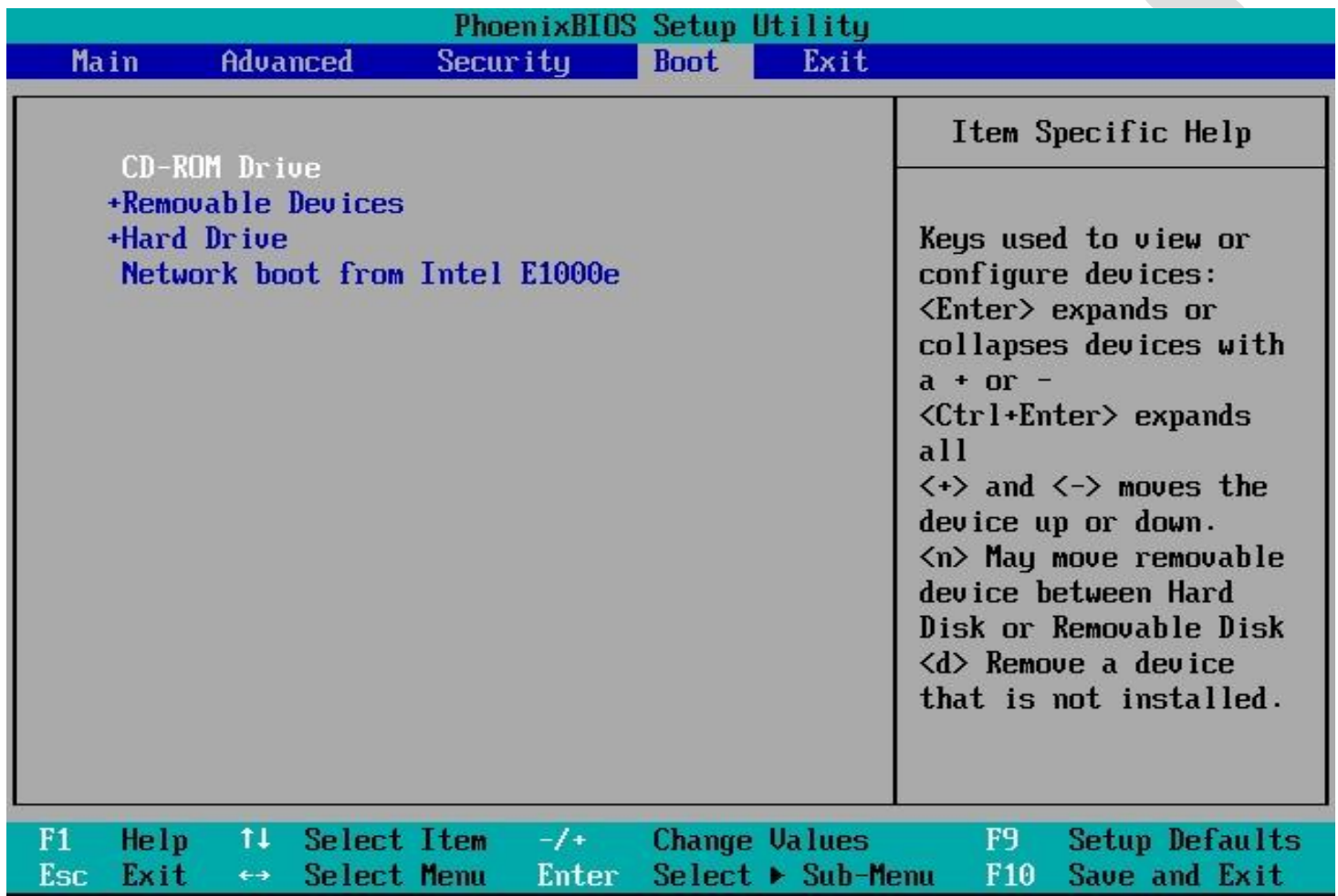


More information can be found at <https://restore.solutions> including customized operating system recovery DVDs for your computer. The first disk you will need is the one marked "Operating System Recovery", only this DVD / USB flash drive will boot up. To make your computer start from this device you will need to make sure your computer is set to boot from it.

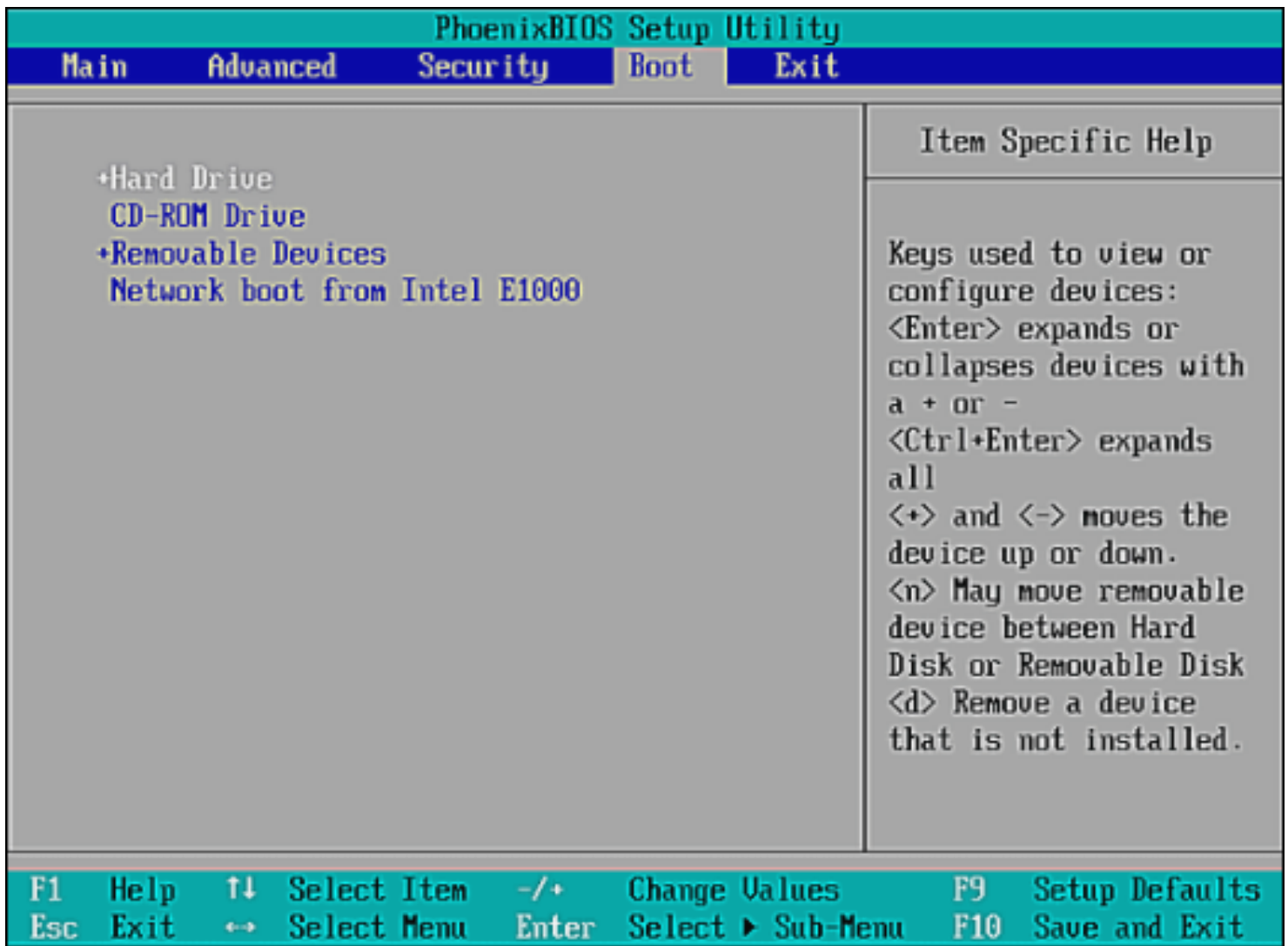
PhoenixBIOS Setup Utility			
Main	Advanced	Security	Boot Exit
System Time:	[19]:17:19]		Item Specific Help
System Date:	[10/28/2014]		
Legacy Diskette A:	[1.44/1.25 MB 3½"]		<Tab>, <Shift-Tab>, or <Enter> selects field.
Legacy Diskette B:	[Disabled]		
▶ Primary Master	[None]		
▶ Primary Slave	[None]		
▶ Secondary Master	[CD-ROM]		
▶ Secondary Slave	[None]		
▶ Keyboard Features			
System Memory:	640 KB		
Extended Memory:	2096128 KB		
Boot-time Diagnostic Screen:	[Enabled]		
F1 Help	↑↓ Select Item	-/+ Change Values	F9 Setup Defaults
Esc Exit	↔ Select Menu	Enter Select ▶ Sub-Menu	F10 Save and Exit

There are many different ways to enter your BIOS as it is manufacturer / BIOS type dependent. Normally to enter your BIOS you would need to press [DEL] or [F2] right after you have turned your computer on.

Most computers will display a message on startup that says "Press [key] to enter setup" or something similar, so look for this message when your computer restarts to confirm the key you should press to enter the BIOS. Consult your computer's manual or online support page to confirm your computer's BIOS key.



Next you will need to Navigate to the Boot or Boot Options tab. You will likely need to use the arrow keys to select it.



Select a device to boot from. You have a few options. Again this is manufacturer and BIOS dependent, every computers BIOS will look slightly different.

For a USB flash drive, select the Removable Devices option.
For a disc / DVD installation, select the CD-ROM Drive option.

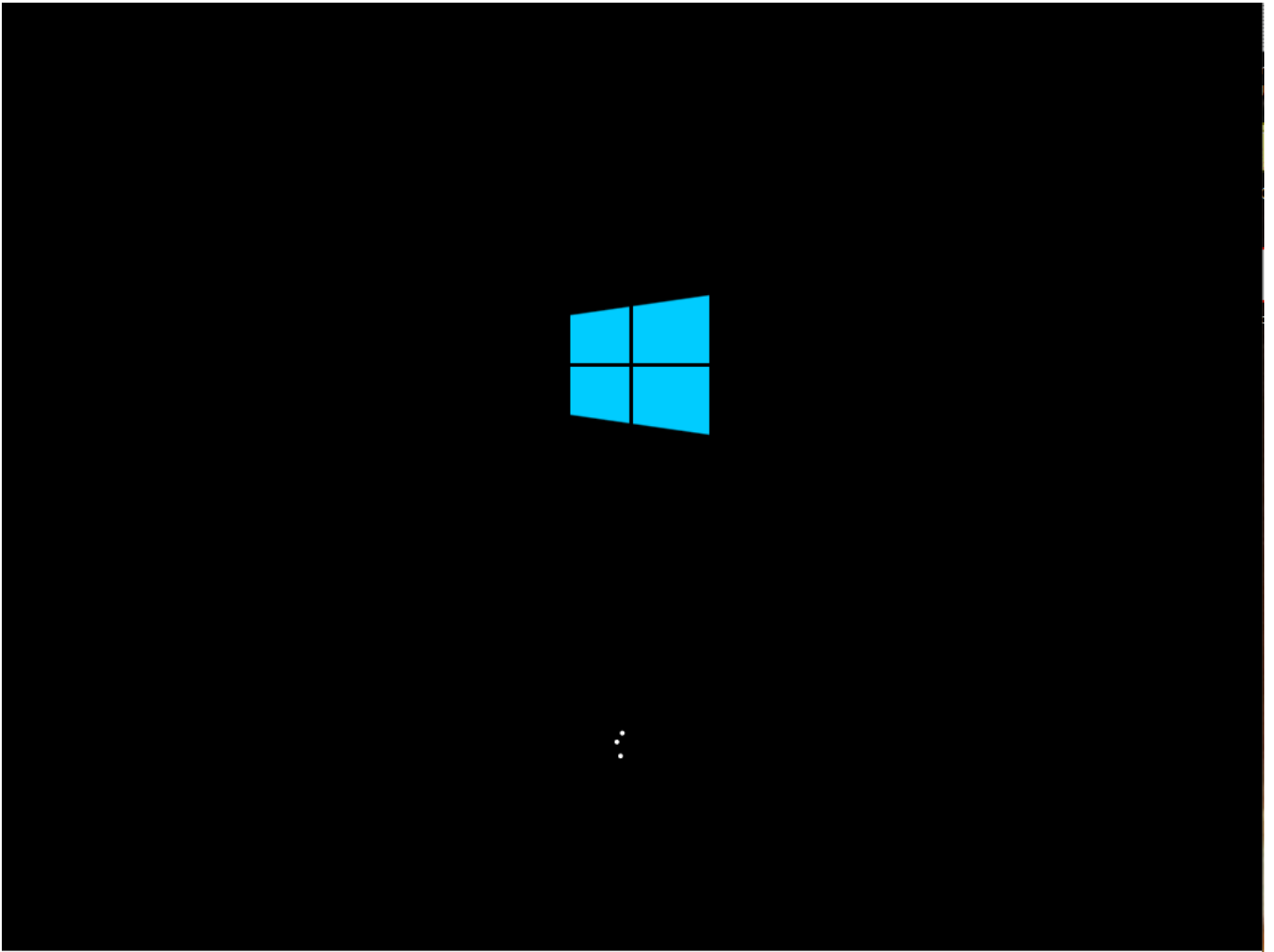
Once you have selected the correct boot device you will need to save your settings and exit. You should see a tab or press a key to do this such as [F10] at the bottom of the screen or something that says "Save and Exit". As soon as you select it the system will save your BIOS settings and restart your computer.

You may have to press [Enter] to confirm the changes.



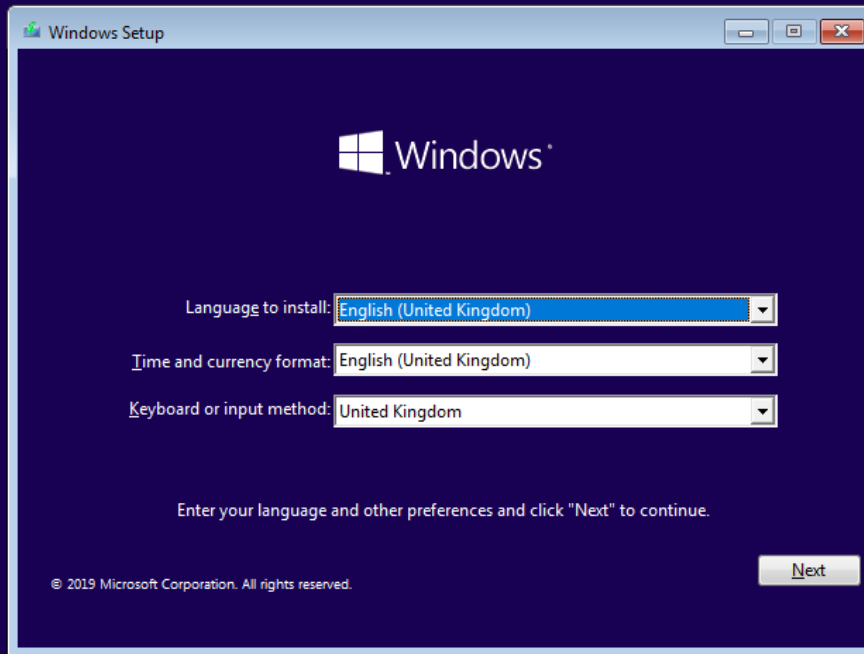
```
Press any key to boot from CD or DVD..
```

If you have setup your BIOS correctly, as soon as your computer restarts, you will see a prompt saying "Press any key to boot from CD or DVD" it may specify an alternative device such as a USB flash drive. At this point you **MUST** press any key to boot from your DVD or USB recovery media.

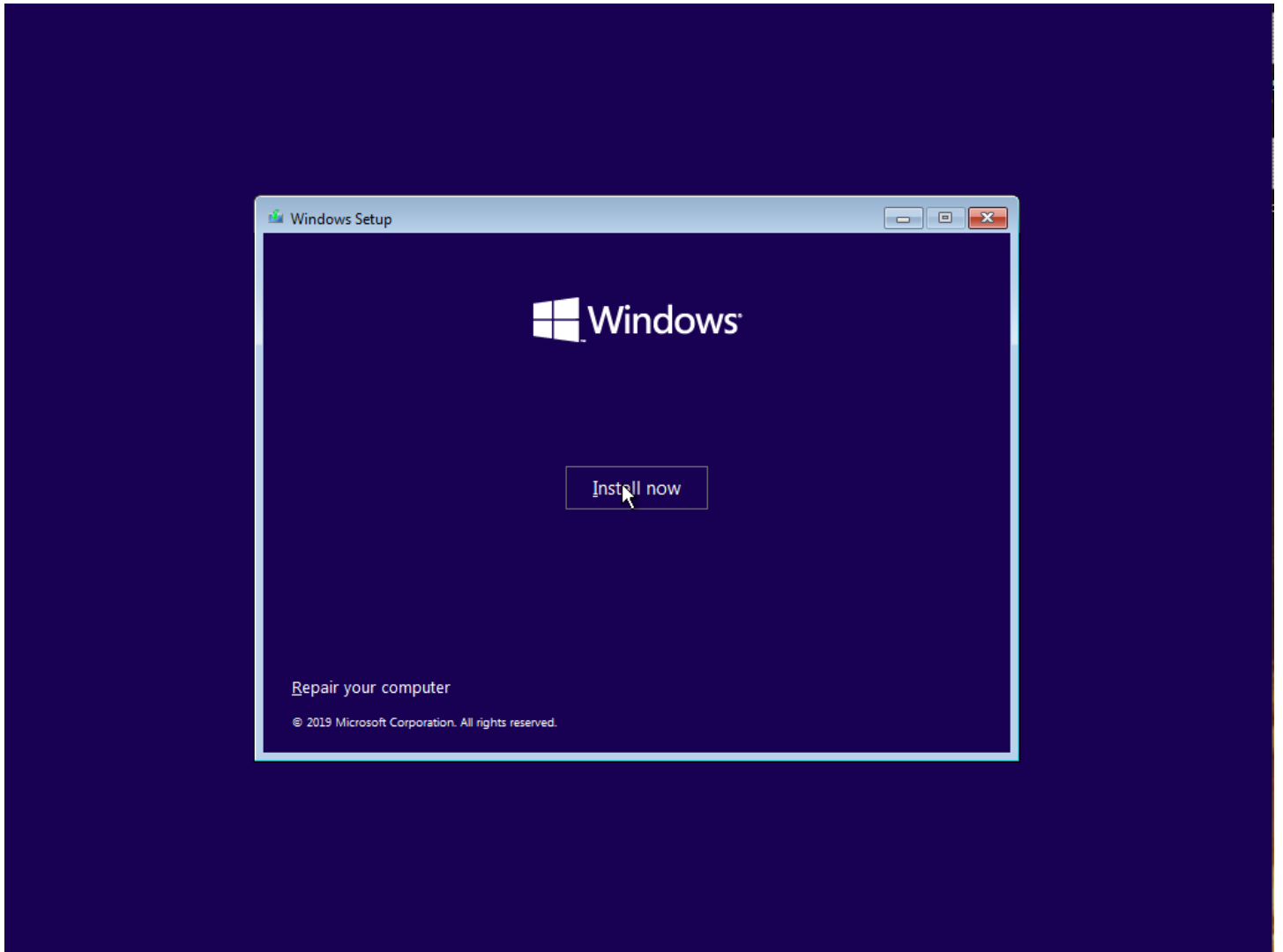


Next you will need to wait for your computer to restart. Once your computer has restarted, you should see a window exactly as above.

Restore

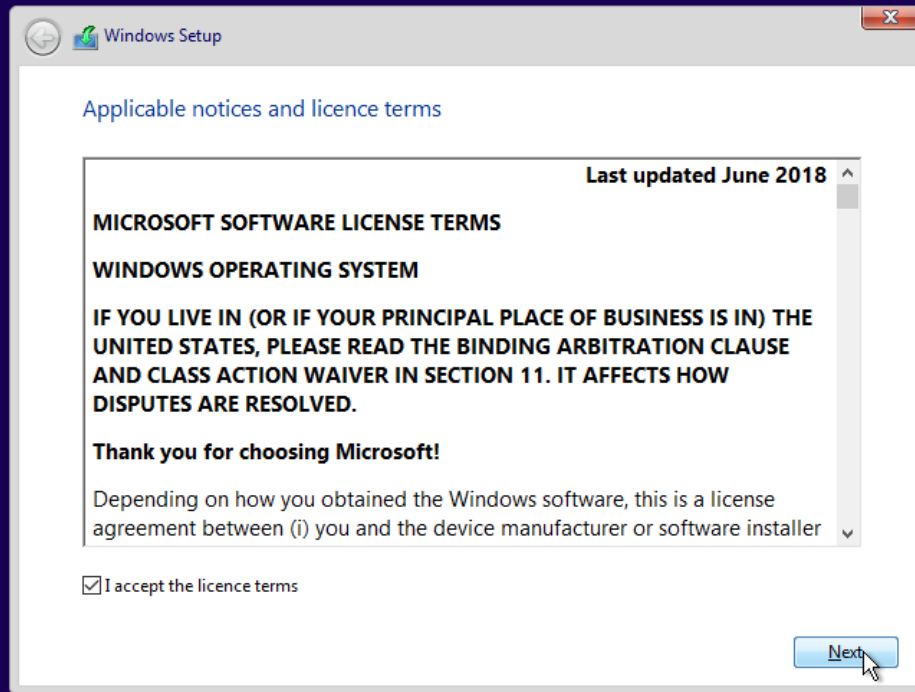


Next choose the correct language, time, keyboard and currency format for your location and press next.



Now just click the Install now button.

Reston



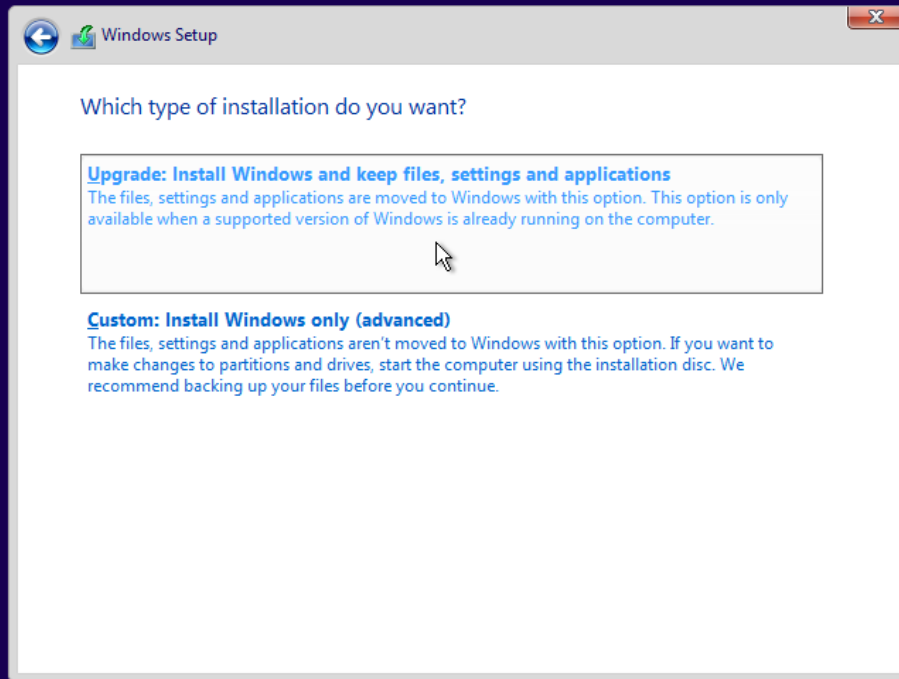
1

Collecting information

2

Installing Windows

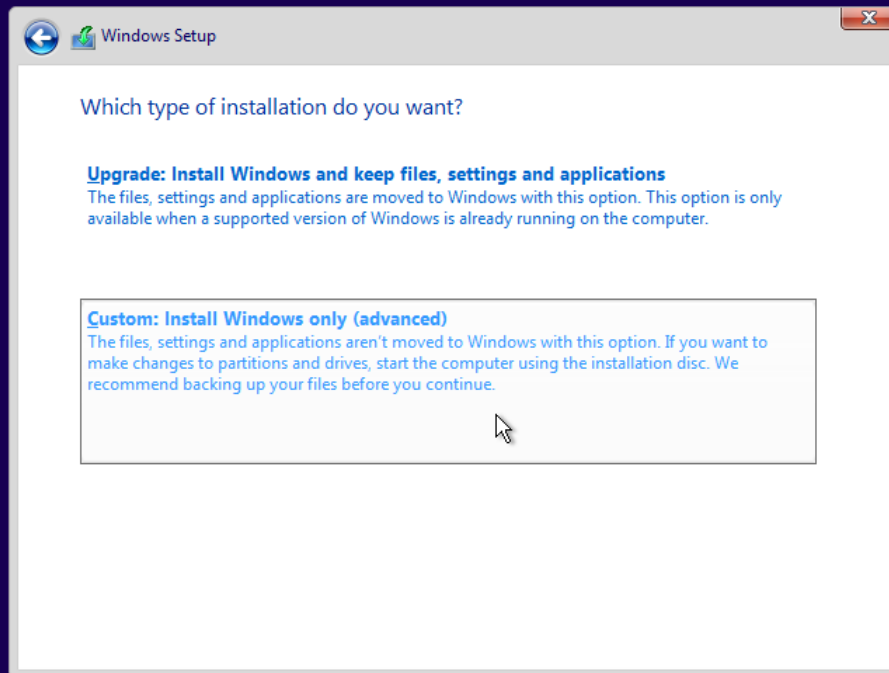
Accept the license agreement and click the Next button.



1 Collecting information

2 Installing Windows

If you click upgrade, then all your files and apps should be preserved. The recovery disk will try to repair and or upgrade your current operating system without formatting or deleting any information from your current install.



1

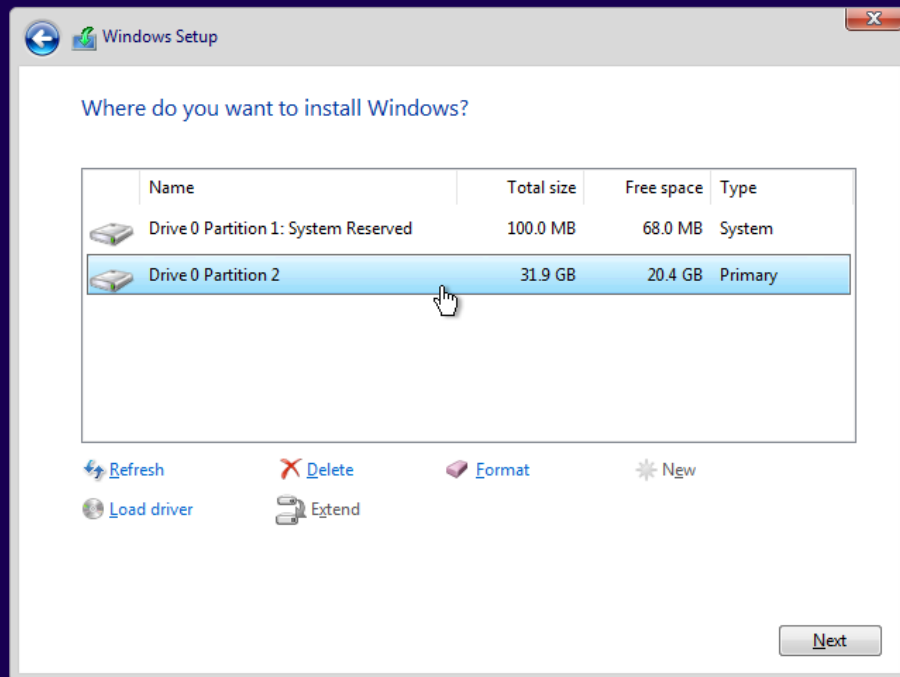
Collecting information

2

Installing Windows

The alternative option is the Custom install selection box. This will carry out a complete clean re-install along with hard disk formatting.

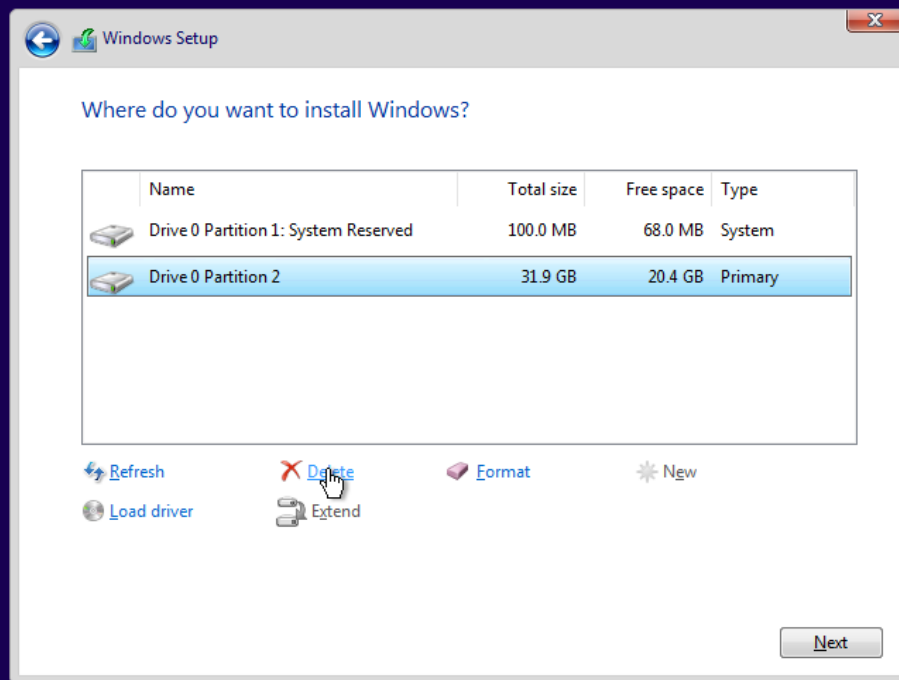
For the purposes of this document we will proceed with the clean install option. As from this point the upgrade option is very intuitive. If you are following the upgrade option please proceed here to continue



1 Collecting information

2 Installing Windows

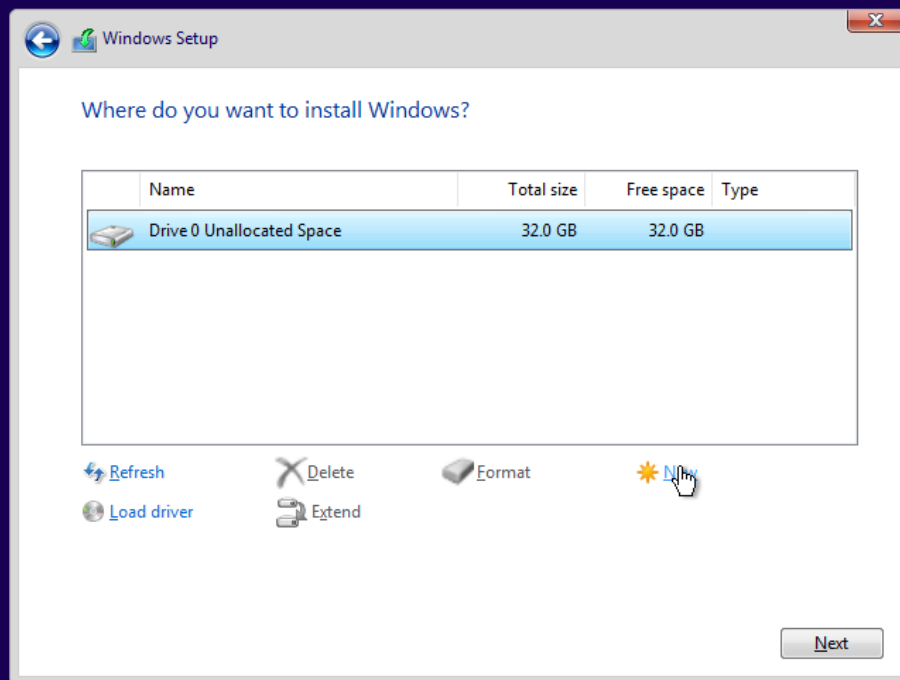
You will be presented with all your current hard disk partitions. Your particular setup may have 3 or 4 separate partitions all labeled differently. For a safe clean install we need to delete all of them (or as many as we can) and make one single larger partition. Keep in mind windows will turn this into more than one at the point of install.



1 Collecting information

2 Installing Windows

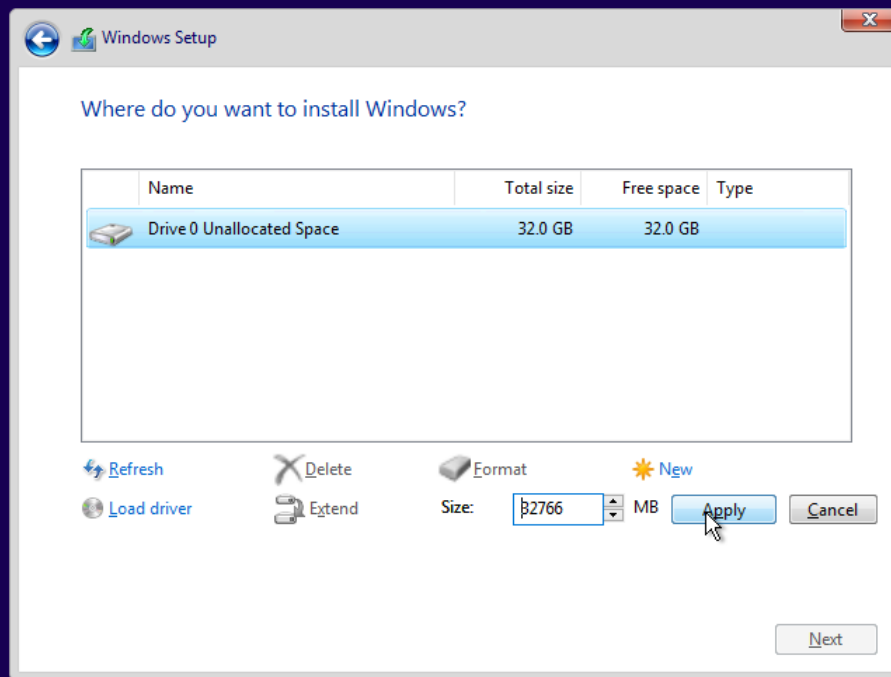
Select each partition in turn and repeat the process by selecting and deleting each one in turn. every time you do this you will see one of the single partitions get bigger, this is normally marked as Unallocated Space.



1 Collecting information

2 Installing Windows

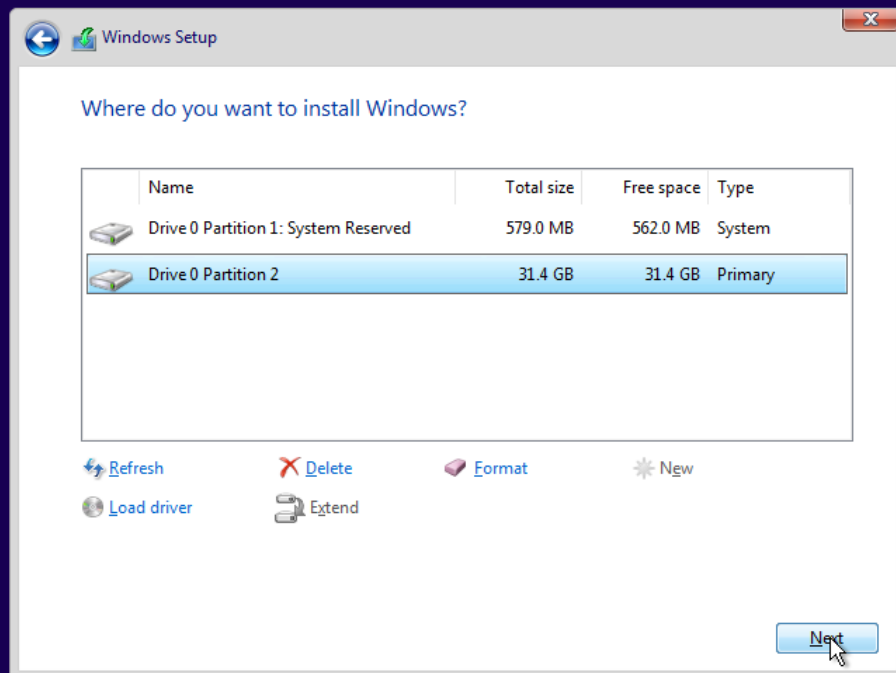
Once you have the large Unallocated Space block, select it and then select the button that says "New" exactly as in the screen capture above.



1 Collecting information

2 Installing Windows

Then let the system automatically decide the size for you, just press the "Apply" button unless you are an advanced user and want to make custom sizes and partitions.

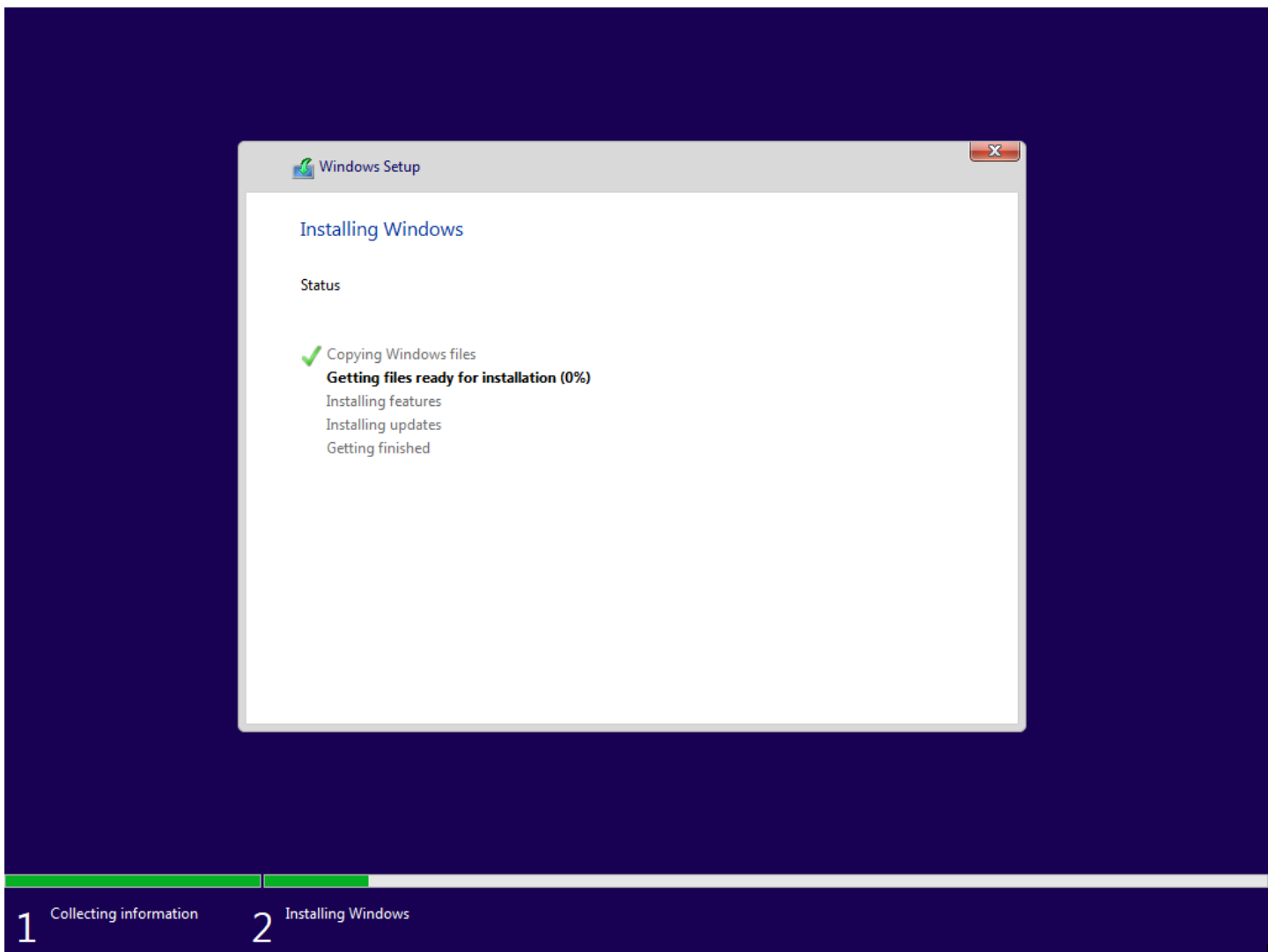


1 Collecting information

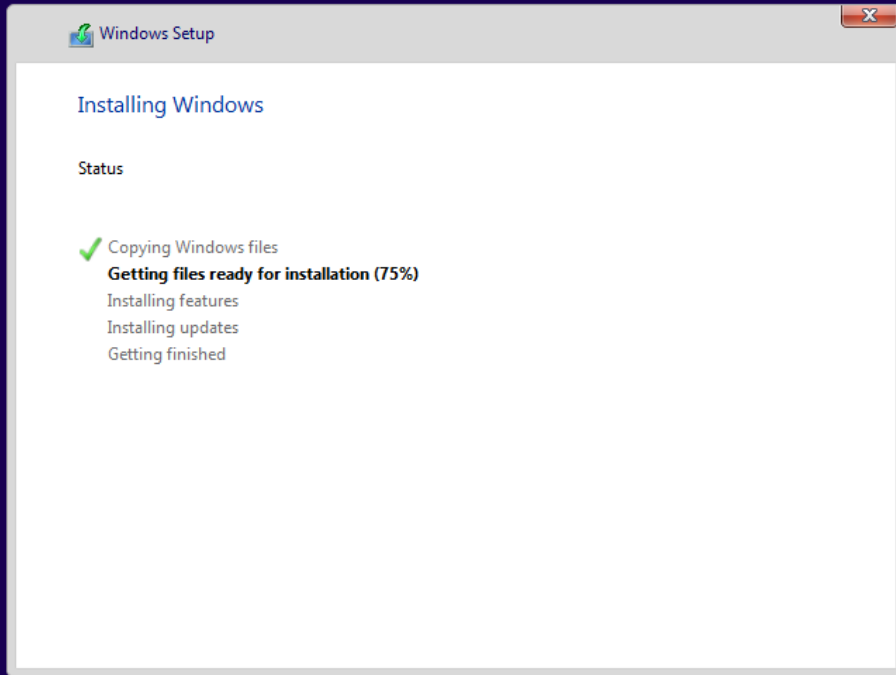
2 Installing Windows

Once you have completed this, the system will automatically add a "System Reserved" partition. This is completely normal and is the built in recovery data that Windows makes in case you need it in the future.

Just click the Next button and the the installation will start



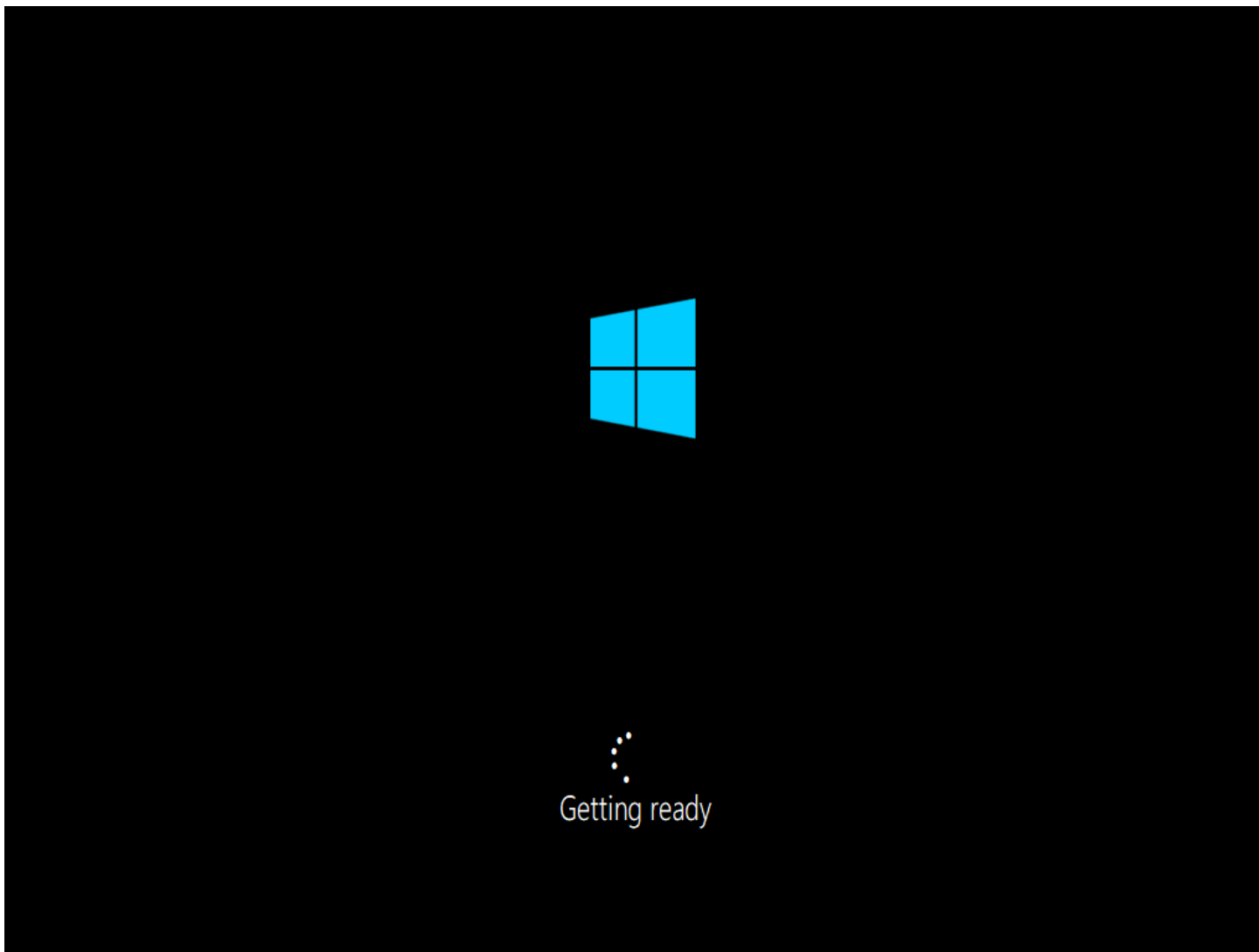
You may have to wait a fair amount of time as the next step, seen above, as it depends upon your computers hard disk throughput and processor speed. So this could be anything from 5 minutes to an hour but you will see a progress report marked in % for each of the install sections.



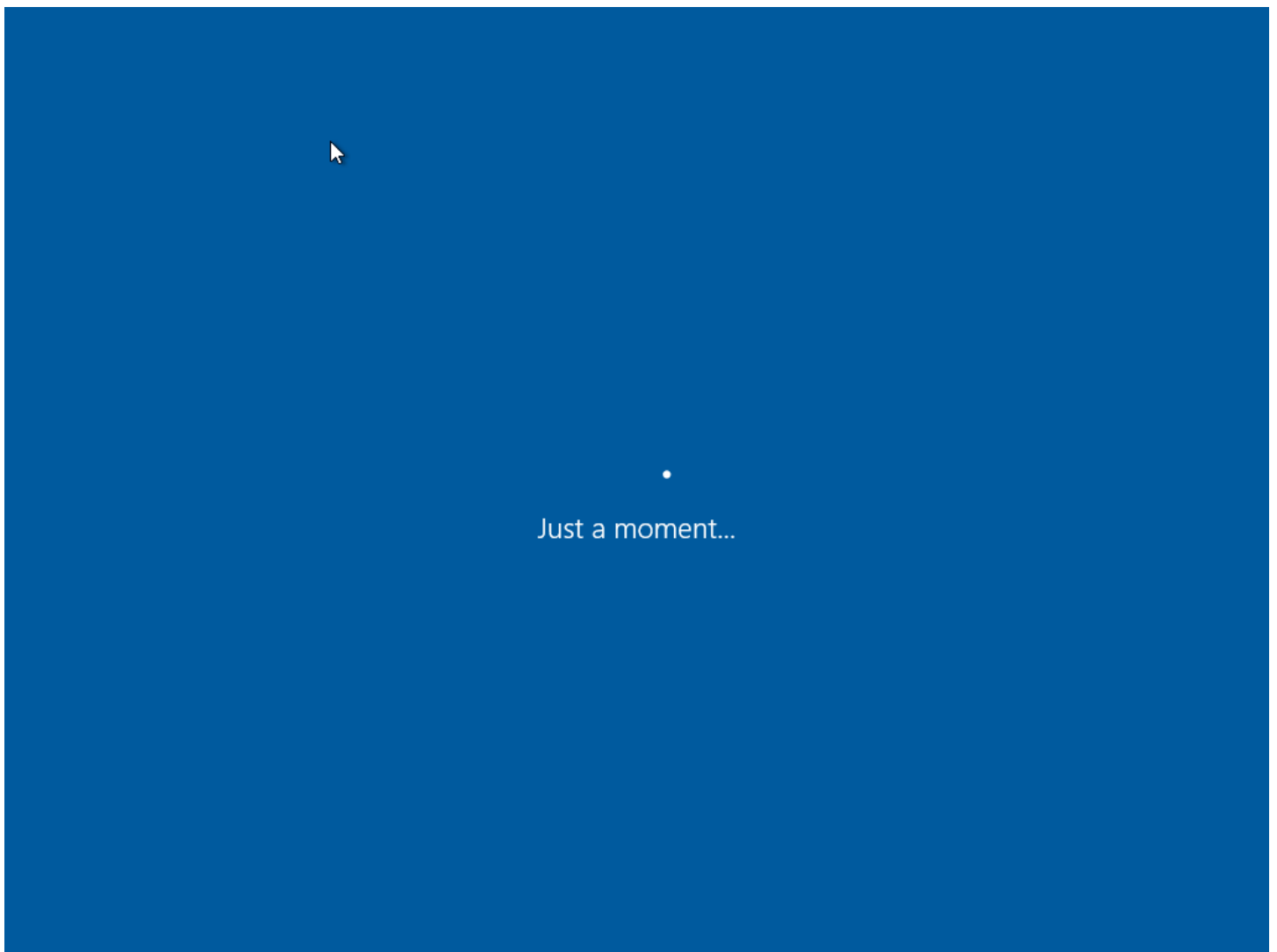
1 Collecting information

2 Installing Windows

Restored



As soon as Windows has copied all the relevant files and is ready to start the next phase you will see a page as above. Your System may reboot one or more times from this point.



Once your system has restarted you will see another page asking you to wait. There are a lot of very similar pages that appear that ask you to wait. This is normal!

Let's start with region. Is this correct?

Tuvalu

U.S. Minor Outlying Islands

U.S. Virgin Islands

Uganda

Ukraine

United Arab Emirates

United Kingdom

Yes

We are now getting into the setup stages, it is important to get this part right as there is a lot of regional specific settings as well as privacy and data sharing options. Just select the region that you want Windows to associate your physical location with.

Is this the right keyboard layout?

If you also use another keyboard layout, you can add that next.

- United Kingdom
- Canadian Multilingual Standard
- English (India)
- Irish
- Scottish Gaelic
- United States-Dvorak
- United States-Dvorak for left hand

Yes

Although you have already selected your keyboard and regional settings Windows will ask you to reconfirm it here.



Do you want to add a second keyboard layout?



Add layout

Skip



Skip or add one!

Restored



Now we have some important setting up to do.



Yet another disguised please wait screen will be next.

Reston

How would you like to set up?



Set up for personal use

We'll help you set it up with a personal Microsoft account. You'll have full control over this device.

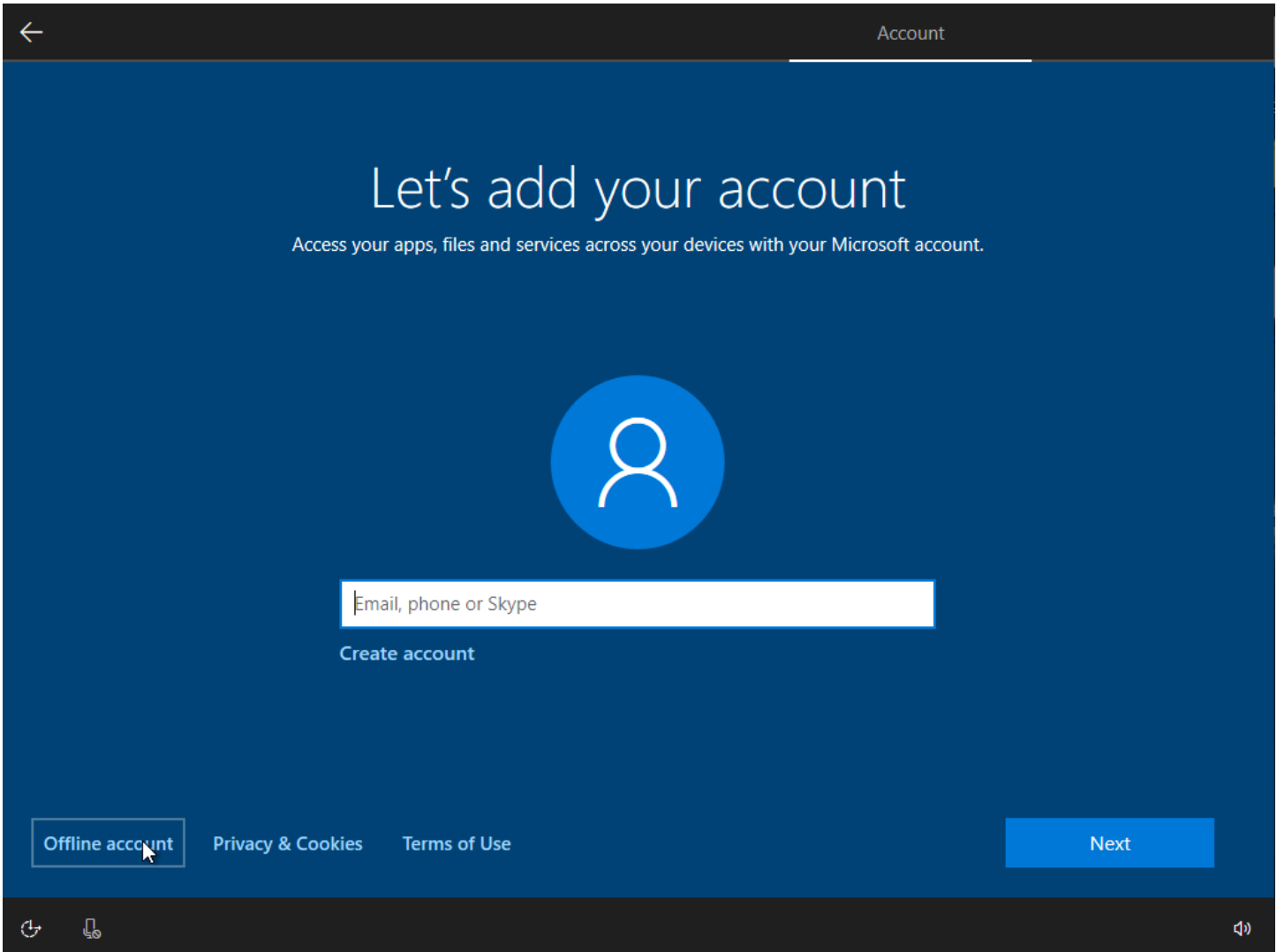


Set up for an organisation

You'll gain access to your organisation's resources, such as email, network, apps and services. Your organisation will have full control over this device.

[Next](#)

For the purposes of this document we will proceed to set up the operating system for personal use. If you are part of an organization your I.T. administrator should be able to help you out.



Windows will want you to link your install to your Microsoft registered account. If you have one and you are happy to do this then enter it here. For the purposes of this document we will proceed with an offline account. Look at the bottom left and click the button that says "Offline account". This selection will let you set-up Windows without entering an email address.

Sign in to enjoy the full range of Microsoft apps and services



1

Sign in and create an account

2

Enjoy everything from games to Office to free cloud storage with

3

Access the tools you love on all your devices

Limited experience

Get it now

Windows is going to try to convince you that you will lose out if you do not agree to an install that is attached to an email address or Microsoft account. It maybe that you will and that you should add an email address, but for the purposes of privacy and for this document we will proceed as previously selected. So if you don't want to sign in with an account select the button labeled "Limited experience" at the bottom left of the screen.

Who's going to use this PC?

What name do you want to use?

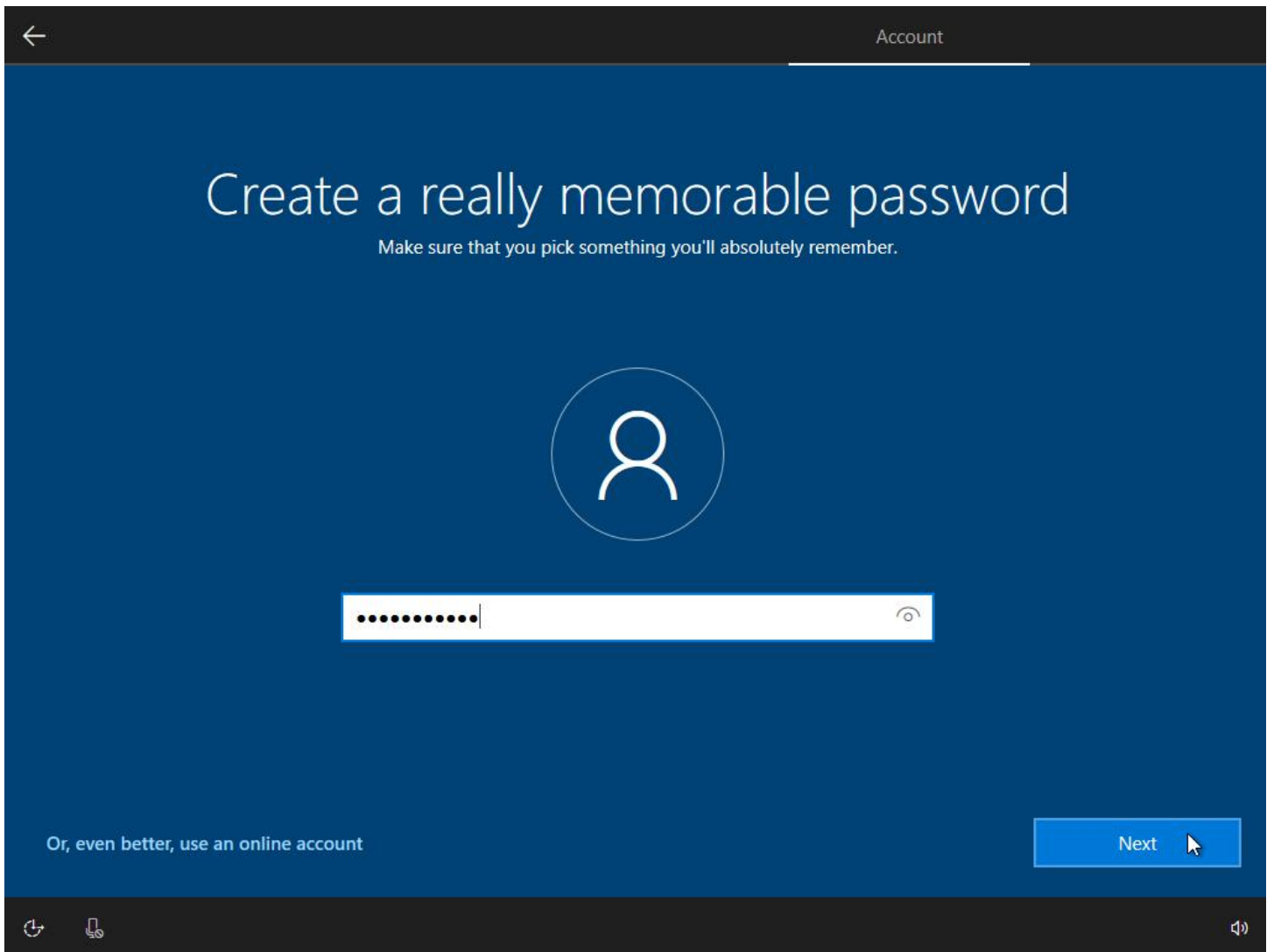


Or, even better, use an online account

Next



Now you just need to enter a user name for this Windows account and click [Next].




Now you just need to enter a password and click the [Next] button. If you forget your password you can always use our [Windows password reset software](#) to recovery a lost or forgotton password.

← Account

Create security questions for this account

Just in case you forget your password, choose 3 security questions and make sure your answers are unforgettable.



Security question (1 of 3) ▾

Your answer

Or, even better, use an online account

Next

⌂ 🔍 🔊

To make sure you are who you say you are for future issues, you will be asked to create 3 security questions for your account. These can range from the name of your first pet to how tall your grandmother is, or indeed if you like pork chops.

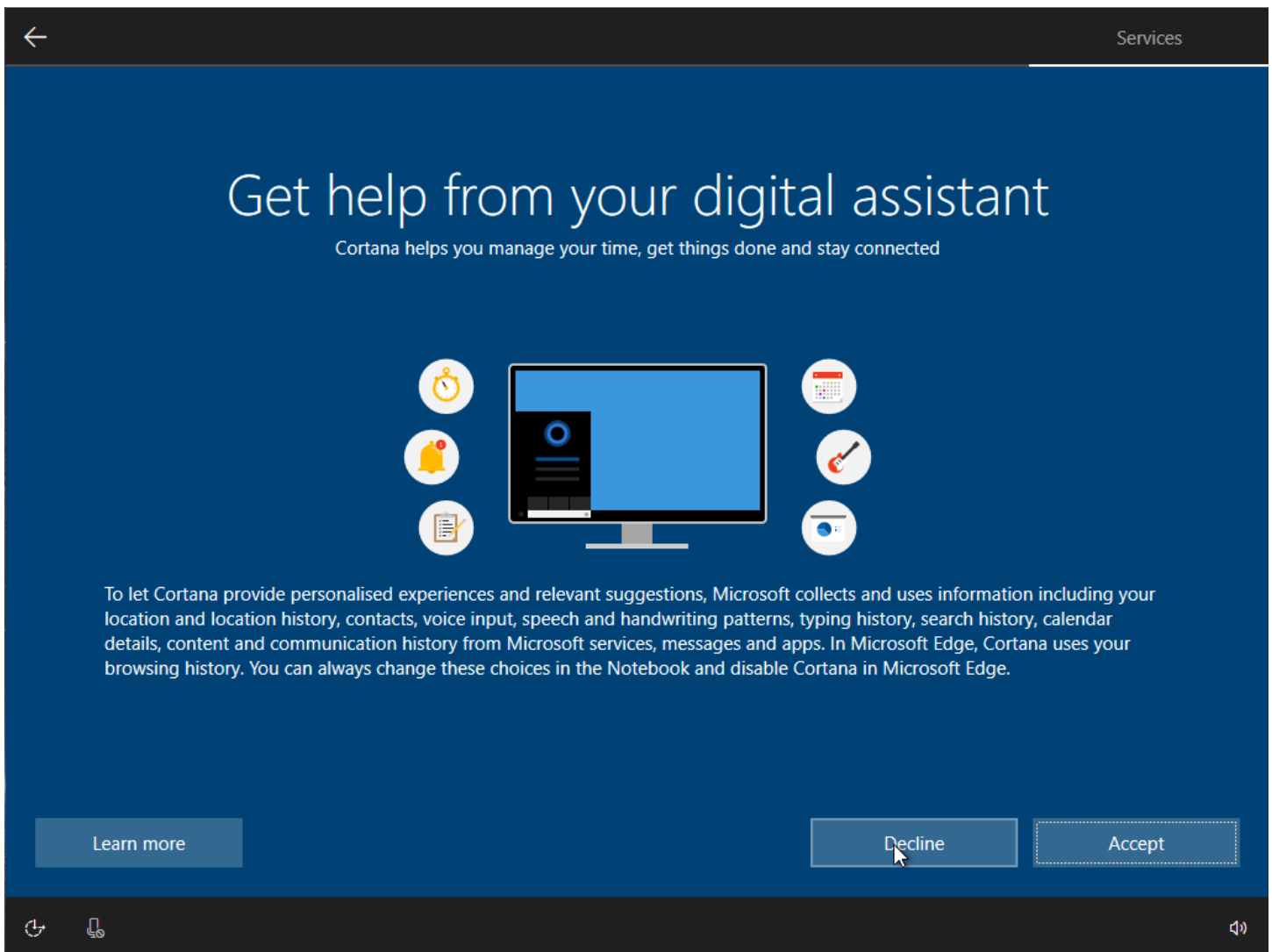
Do more across devices with activity history



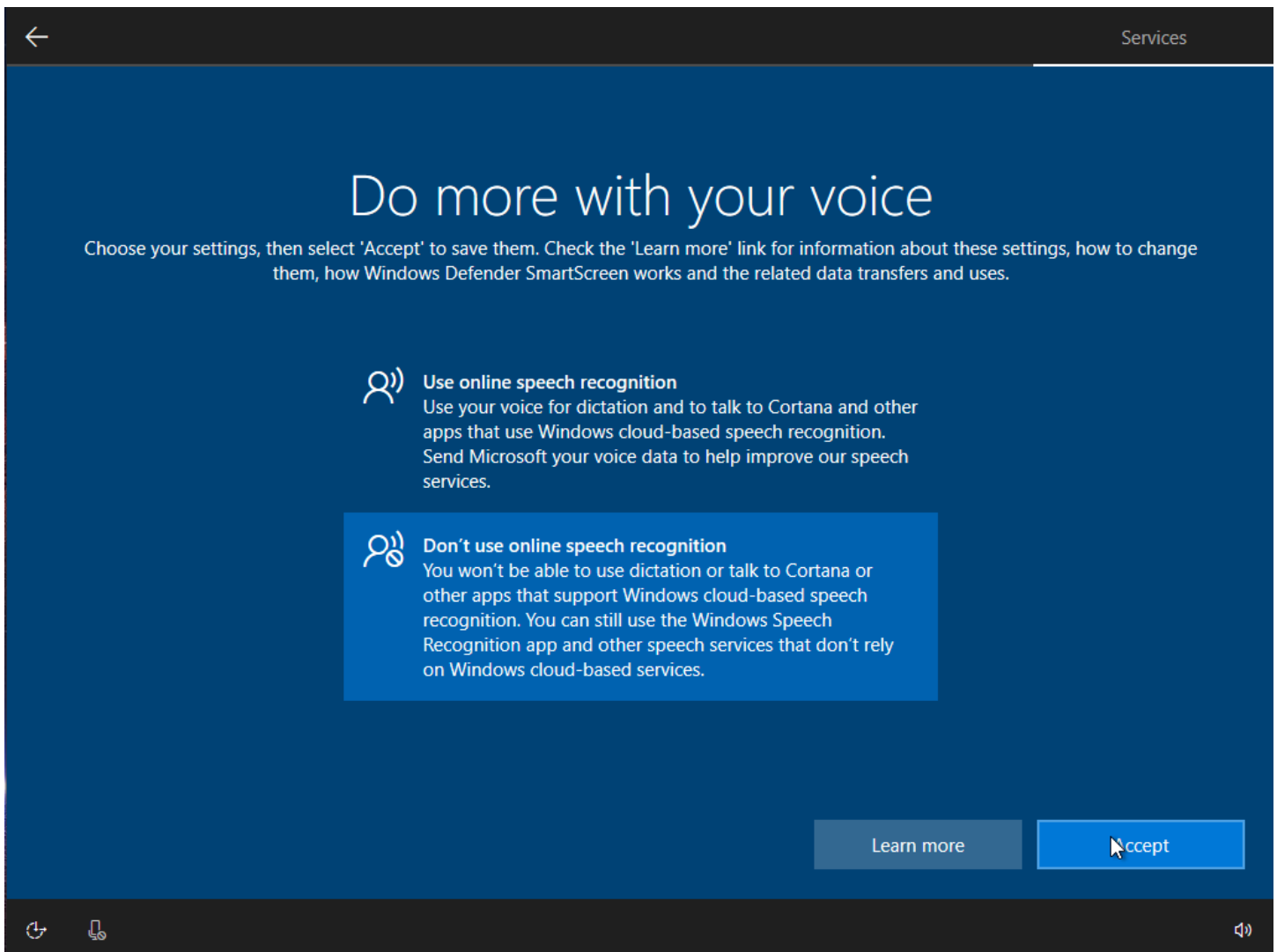
If you want timeline and other Windows features to help you continue what you were doing, even when you switch devices, send Microsoft your activity history, which includes info about websites you browse and how you use apps and services. Select **Learn more** to find out how Microsoft products and services use this data to personalise experiences while respecting your privacy.

[Learn more](#)[No](#)[Yes](#)

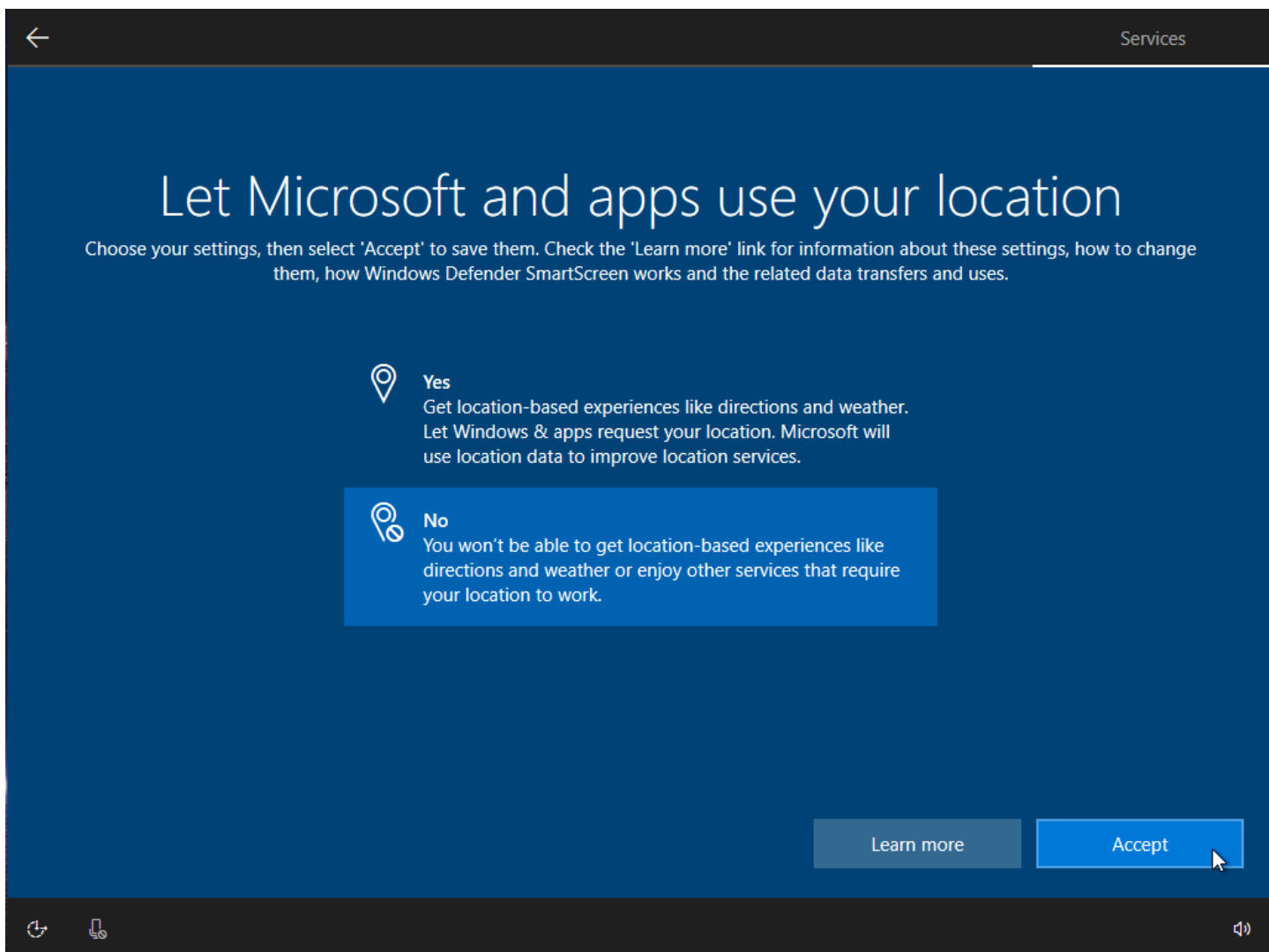
The next step is aimed at connectivity and linking. If you want to link in other apps and devices such as your mobile phone then click the Yes button. However in the interest of privacy we will click the [No] button.



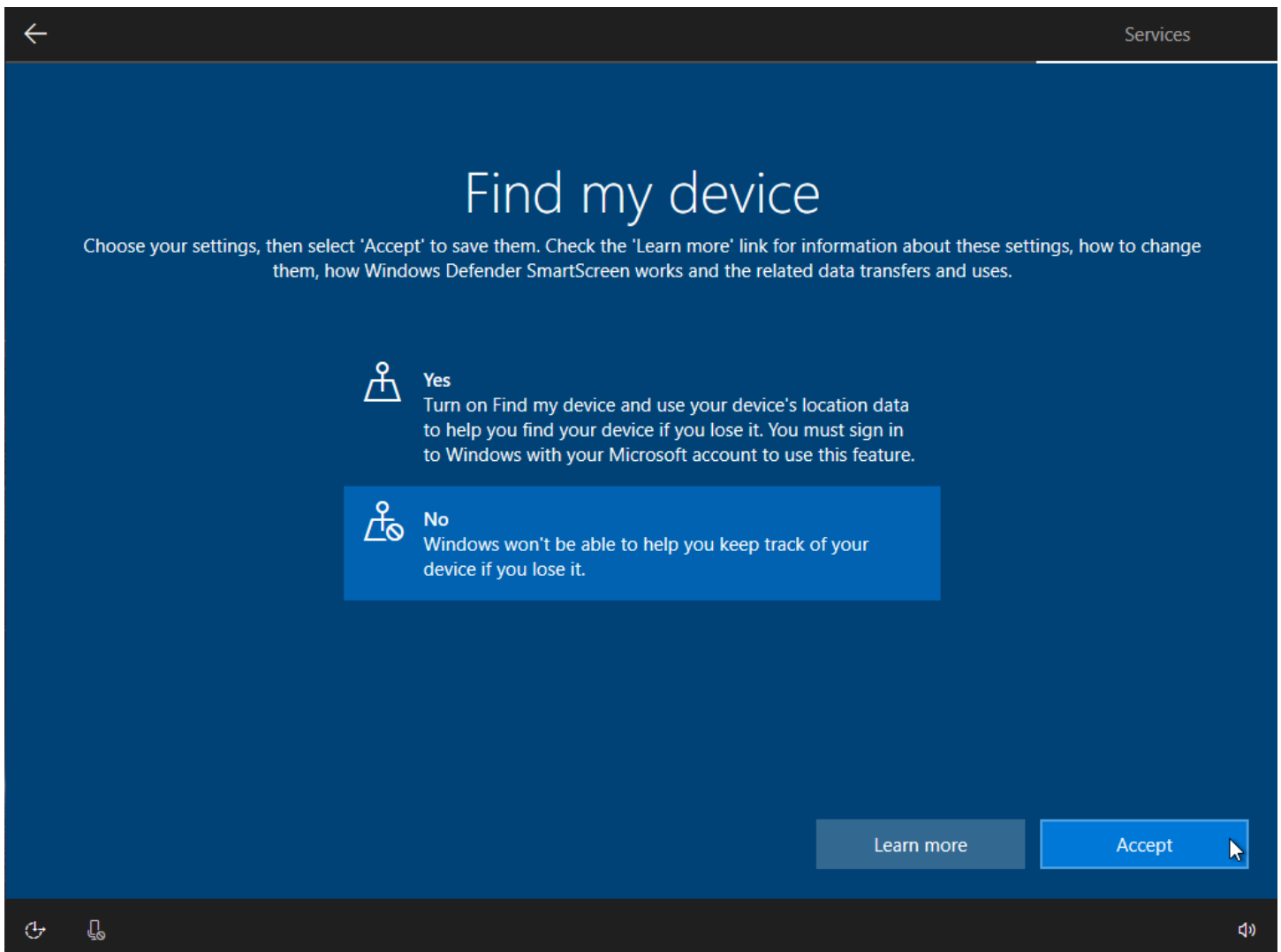
If you like voice recognition and integration with a digital assistant then click [Accept]. This will integrate Microsoft's Cortana into your operating system. Cortana operates much like a smart speaker such as Alexa or Google Home. However in the interests of privacy we will press the [Decline] button.



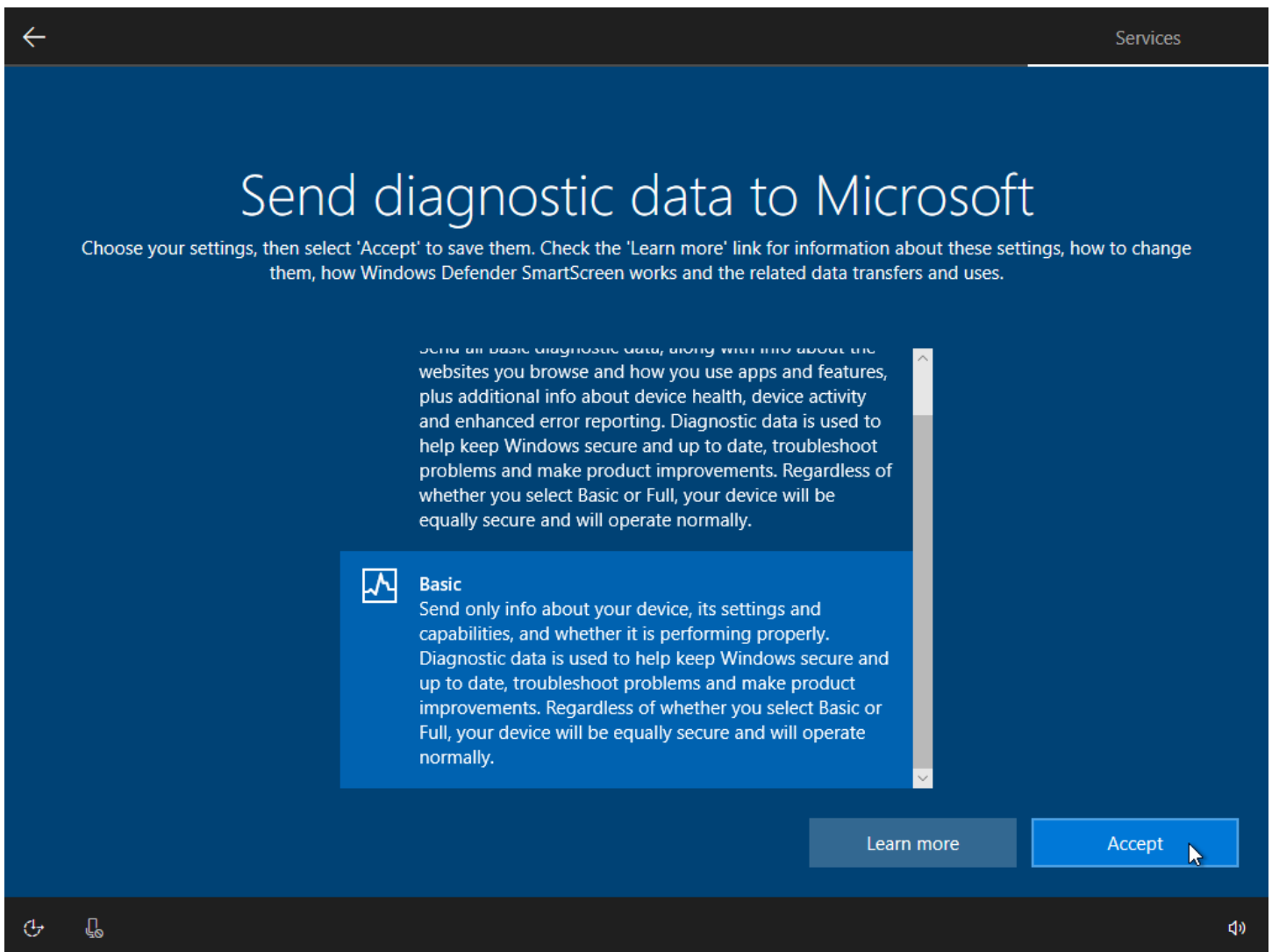
Would you like your PC to send your conversations and commands to an on-line server to process for voice recognition? This will allow you to use dictation and many other voice operated applications. In the interest of privacy and to disallow the use of your conversations to train A.I speech recognition systems we will select "Don't use online speech recognition" and then we will press the [Accept] button.



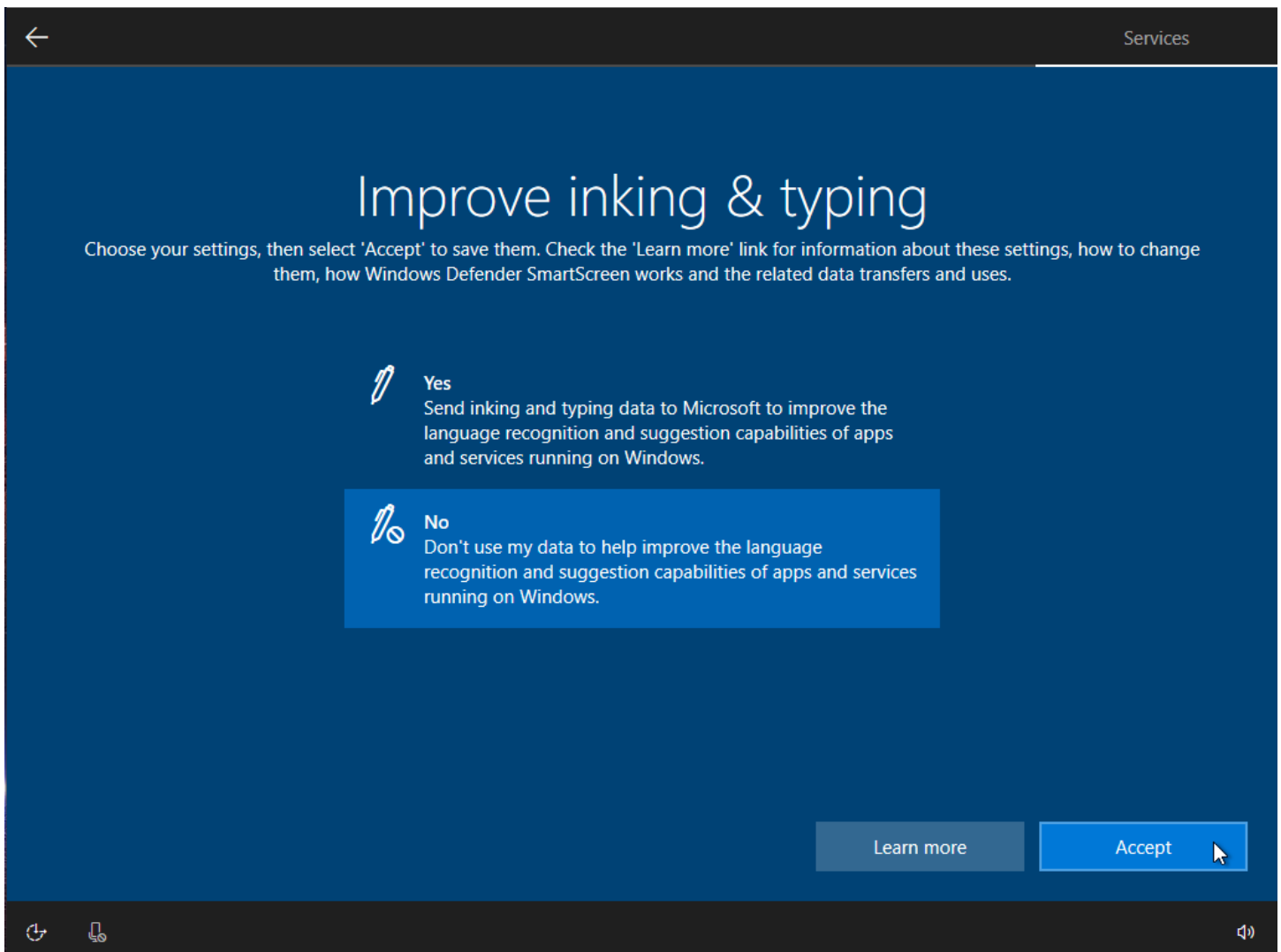
Would you like apps to know your location? This is the kind of data that allows automatic weather forecasts for your area to be displayed. You can just type in your location into an app if you don't want your location data automatically shared. In the interests of privacy we will select the "No" section and then click the [Accept] button.



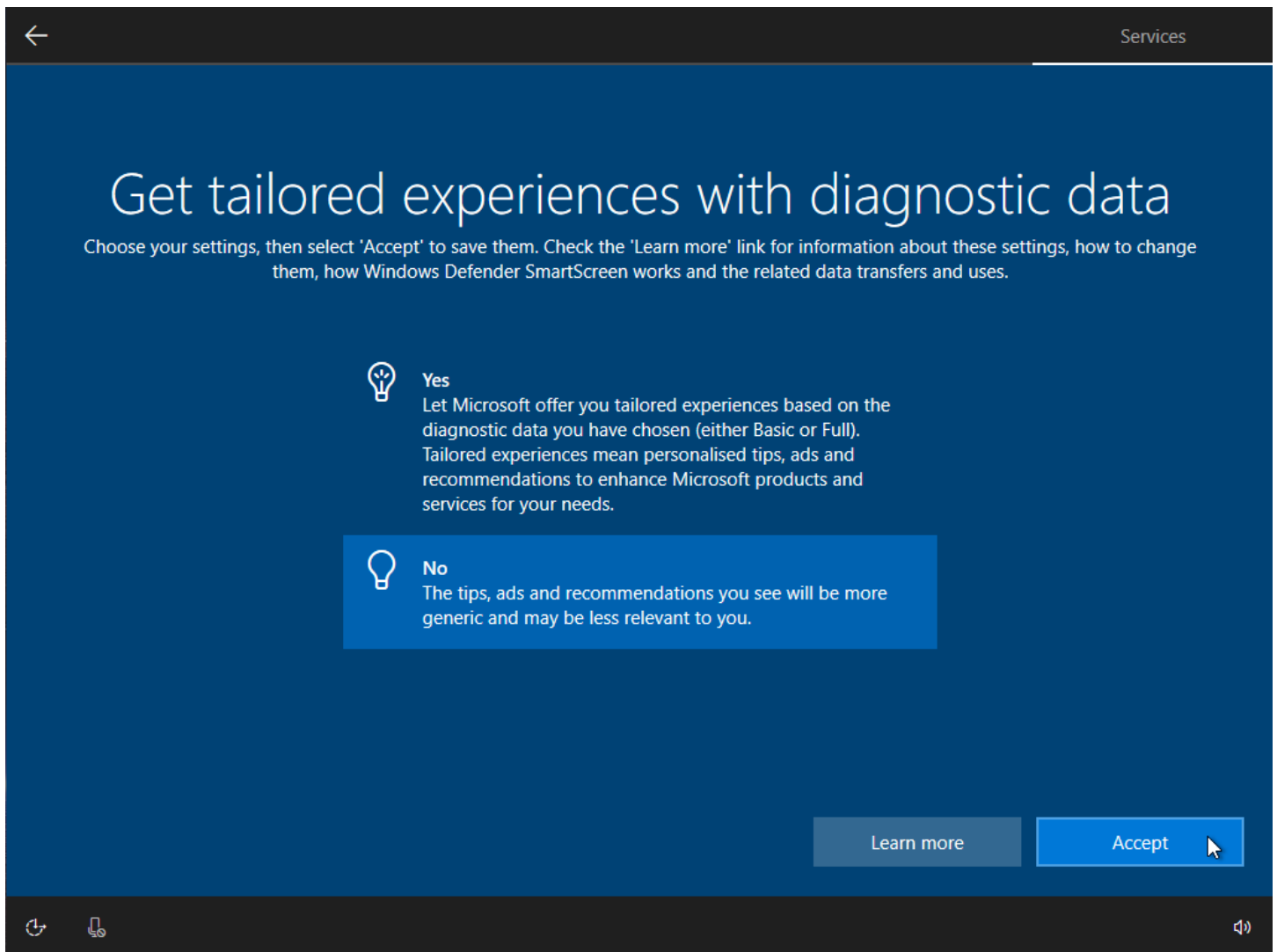
More useful features that use tracking, in this case it is to find your lost device for you, really good if you loose it and you need Microsoft to tell you exactly where it is. In the interests of privacy for multiple devices we will select the "No" box and then press the [Accept]button.



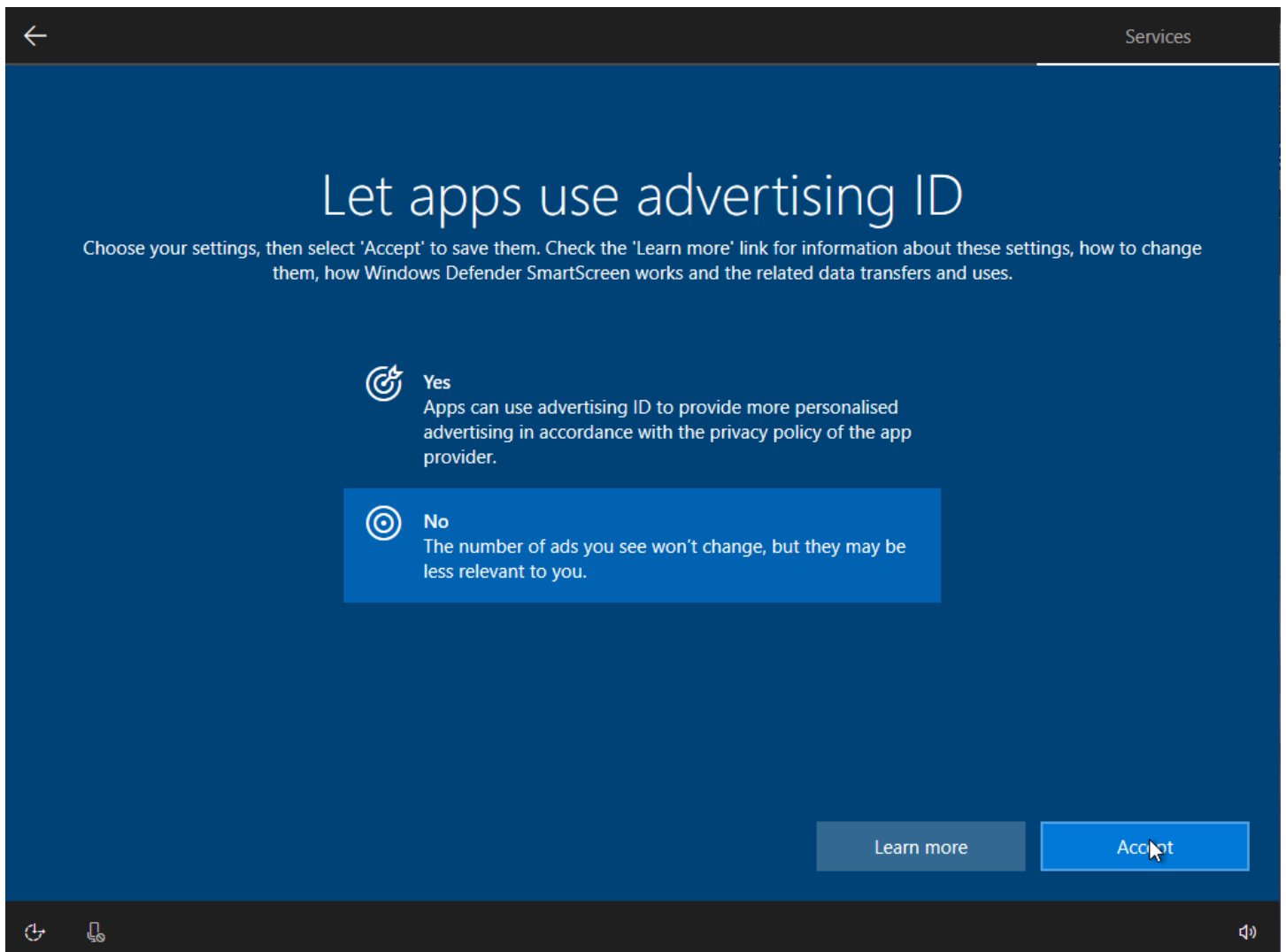
You may want to opt in to send Microsoft more of your personal data and allow them to know how you use apps, websites and data about the health of your hardware. You cant really opt out of this you can just select the "Basic" box and the click the [Accept] button.



This will either allow or deny Microsoft to use your typing data to improve language recognition and suggestion capabilities. This is again A.I. training data that you can opt in to provide. In the interests of privacy we will select the "No" box and then select the [Accept] button.



We have selected the "No" box and then pressed [Accept] as we do not want to send data to Microsoft and allow their profiling A.I. to send us tips and tricks based on our use of Windows.



Yet more personal data being used to track and improve your experience, you may want to enable this if you want target advertising. We have turned this off as we do not wish to be profiled for advertising purposes. Select the "No" box and then click the [Accept] button.

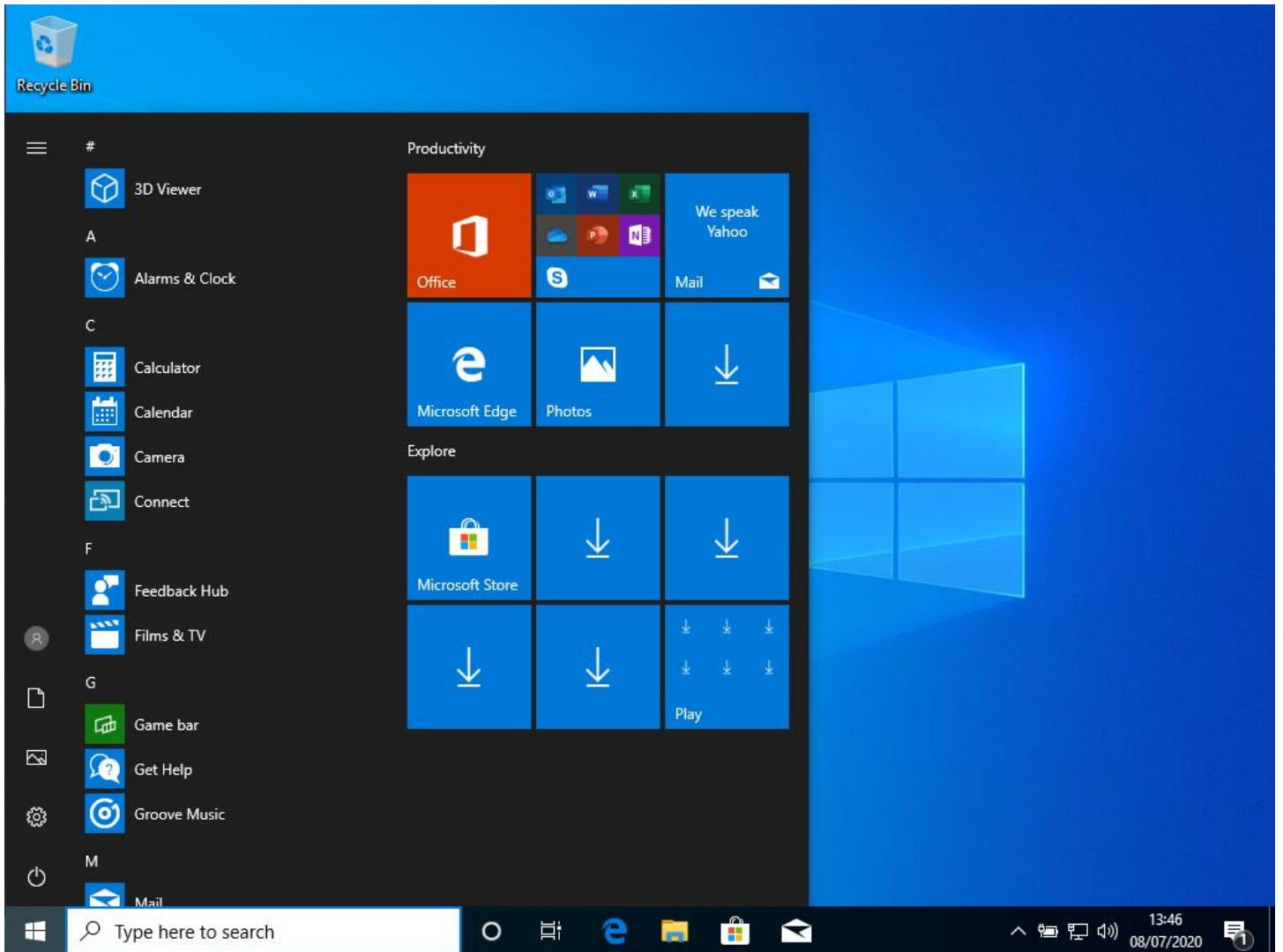
We're getting everything ready for you

Yay!! We are almost ready to go!

This might take several minutes

Don't turn off your PC

Nearly there, no this time we really are nearly there!!



And we are done! If you have missing drivers then use our driver recovery disk! Information on how to use it can be found here
<https://restore.solutions/articles/how-does-the-driver-disk-work>